

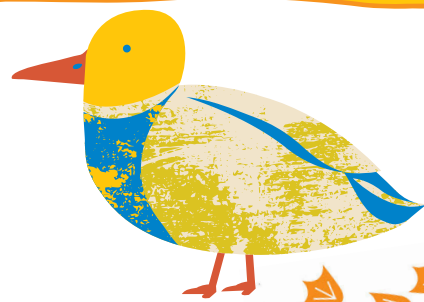
Elphin Windmill



Elphin Windmill is one of the oldest working windmills in Ireland, and the only fully restored working windmill in Connacht.

Built in the 1730s-1740s, it is today a picturesque monument and museum.

In circles its thatched roof turns, through the air its four sails fly,
A stream, a museum, a thrashing machine, Windmill Cottage nearby.



Elphin Windmill

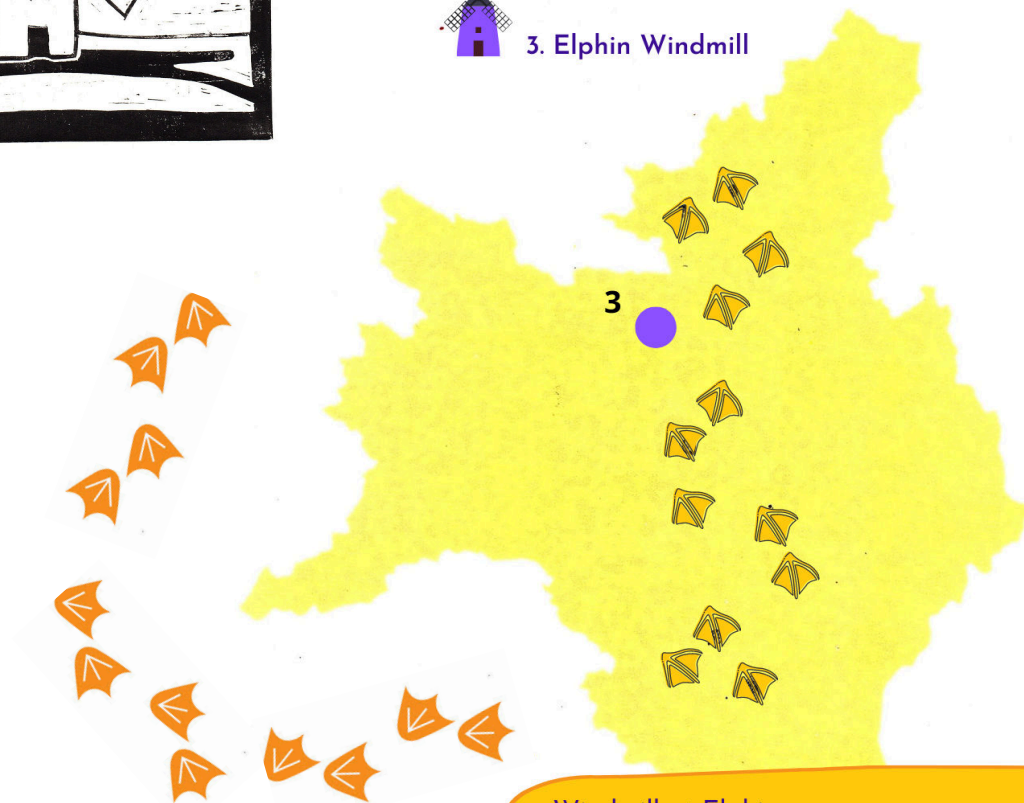
Elphin Windmill is one of the oldest working windmills in Ireland, and the only fully restored working windmill in Connacht. Built in the 1730s-1740s, it is today a picturesque monument and museum. Its thatched roof and wooden sails make it a striking landmark, and its restoration in the mid-1990s has re-created a perfect working model of a cereal-grinding mill. An agricultural museum and Windmill Cottage stand close beside the mill.



Elphin Windmill

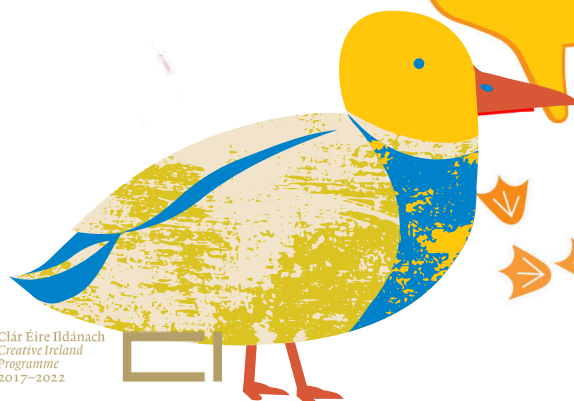


3. Elphin Windmill

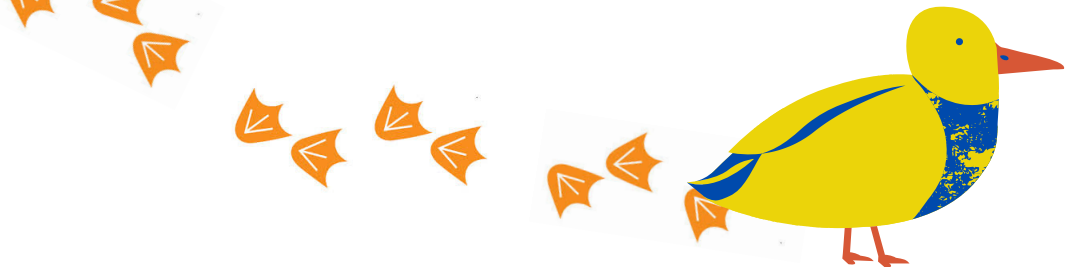


Windmill at Elphin.....

An engineering wonder built three centuries ago,
The mill still stands at Chanterland, now carefully restored
In circles its thatched roof turns, through the air its four sails fly,
A stream, a museum, a thrashing machine, Windmill Cottage nearby.



Elphin Windmill



Elphin Windmill was reputedly built in 1730-40s by local Protestant landowner and Bishop of Elphin, Edward Synge. It is a rare piece of Irish industrial architectural heritage.

Elphin Windmill is the oldest working windmill in Ireland. It is also the only fully restored working windmill in the west of Ireland. The windmill is a picturesque and very striking landmark, with its thatched rotating roof and four timber sails. It was originally used for grinding wheat and barley. A timber tail pole connects from the rotating roof with its four wooden sails, to a cart wheel on the ground which is used to change the direction of the sails.

Cereal-milling became less profitable after the Napoleonic wars ended in 1815, and many windmills fell into disuse in the following years. By 1837 the Elphin mill was in ruins. The most descriptive and evocative account of the windmill and its surroundings can be found in the archives of the National Folklore Schools Collection, where a pupil from Elphin writes in May, 1938:

"There is a windmill about a quarter of a mile on the north-side of the town. It is in the village of Chanterland and it is on the left-hand side of the road as a person goes from Elphin to Boyle. It is a circular structure and it was well built because although it is very old it is as good as when it was built. There are two doors on it, one facing the other but one is filled with stones. There is a stream going by the mill and where the Boyle road crosses it is called The Mill Dam. The stream rises in the Deanery and it flows in an eastern direction. There are none of the mill stones to be seen around the Mill. A man named Culligan who died fifteen years ago said that the Windmill was not worked for eighty years before that".

In 1992 a local community group began the restoration process. Over the course of three years, the mill was sympathetically and extensively restored by FÁS and Elphin Area Community Enterprise Ltd. The interior was reconstructed using wood, where today the workings of the windmill are interpreted and demonstrated.

Elphin Windmill was officially re-opened to the public on 22 June, 1996 by world-famous Irish actor Gabriel Byrne.

Windmill Cottage houses an agricultural museum housing a threshing machine, a winnower and other machinery associated with the harvesting of grain. The enthusiastic Tour Guides here are guardians, well-versed in local history.