



CULTURE NIGHT

5 - 6.30pm
19 September

ART *in the* Open

Public Art Trail

Explore Roscommon's Creative Footprint
A Culture Night Park and Town Guided Trail
celebrating Artists, Place and Nature

ALL AGES
WELCOME

#CultureNight #OícheChultúir



Trail Schedule

ART *in the*
Open

5PM - FOYER SPACE AT COUNCIL OFFICES

Begin at Áras an Chontae, with the exhibition launch of Honor FitzGerald's *"See, Saw – A Journey Through Nature"* a painting collection that invites viewers into the quiet world of the garden. Opens with launch and refreshments 4 – 6pm.

5.15PM – 6PM - LOUGHNANEANE PARK

Continue reflecting on our relationship with the natural world in the grassy surroundings of Loughnaneane Park. A special limited-edition event, discover four new Culture Night commissions. Interactive installations which respond and illuminate the park by up-and-coming local artists. The guided trail includes an opportunity to Meet the Artists. Artworks will be in situ in the park for the WEEKEND ONLY.

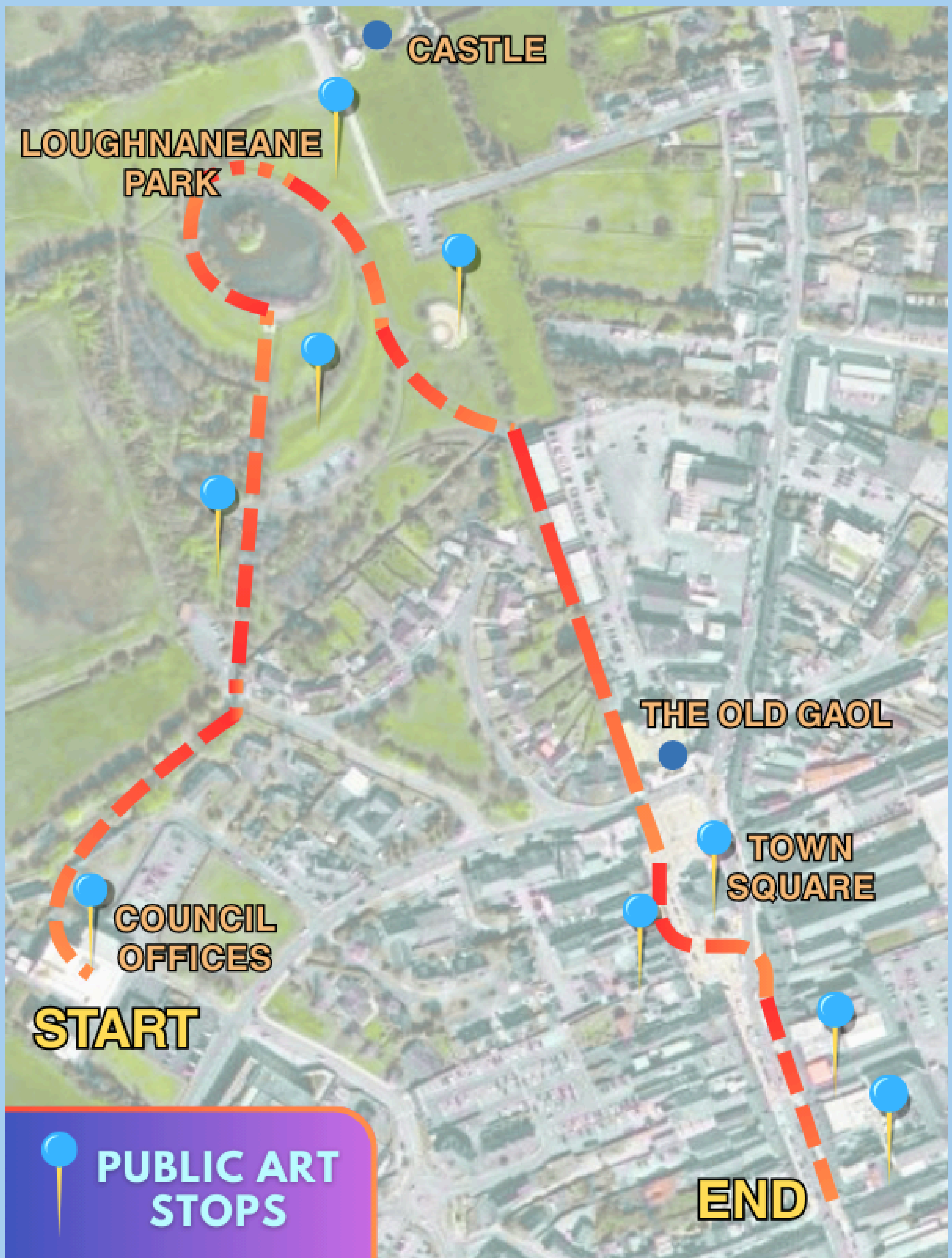
6.15PM - TOWN SQUARE & LIVING LANEWAYS

Roam Roscommon Town's permanent Public Art collection at Alleé de Chartrettes, Market Square, Hynes Lane and Chapel Lane. Celebrating Roscommon's rural identity, historical sites and local figures, mosaic tradition and buzzing pollinators through different artforms.

arts
council
ealaíon
funding
the arts
artscouncil.ie

Walking Route

ART *in the*
Open



CHRISTINA
CARTY

WRITER



TAIRSEACH NA HINSPIORÁIDE

The Threshold of Inspiration is an interactive, text sculpture about receiving inspiration and lending voice to your vision. It is inspired by the notion of 'imbias forosnai' (the gift of poetry and/or foresight), a skill perhaps most famously wrought by the Connacht poet Fedelm in Táin Bó Cuailgne, who predicted the future in verse for Queen Méabh. On Culture Night, we will begin our Public Art Trail at this creative portal, where people will have the opportunity to recite a short incantatory poem while standing before their very own threshold of inspiration, calling for the courage to cross over.

Christina is an actor and creative writer working across screen, poetry and prose. She has a Research MA in Poetry from the University of Hertfordshire and an MA in Creative Writing from Brunel University. Currently, she is working with the BBC, TG4 and the ILBF to write her first feature film, Abhaile. She won the 2023 Irish Writers' Centre Novel Fair Award and the Runner-up Comedy Women in Print Prize.

Socials

Instagram - @irishwriteher

Website - www.christinacarty.com

HELEN DUNCAN

CERAMIC ARTIST



BEGIN AGAIN

This work draws inspiration from the resilience and strength of native plants. It highlights nature's remarkable ability to persevere through challenges. The interplay of light and movement is central to the experience of the installation. Visitors are encouraged to reflect on the strength of indigenous flora and, like these plants, how we too can overcome adversity and thrive through resilience and adaptability.

Helen is a native of Athlone, living between Ireland and Massachusetts, USA. She primarily works in ceramic sculpture, and a selection of functional ceramics. Helen holds a BA in Ceramics from Limerick College of Art & Design, pursued postgraduate studies at the University of Massachusetts and holds an MA in Art Education from Boston University.

Socials

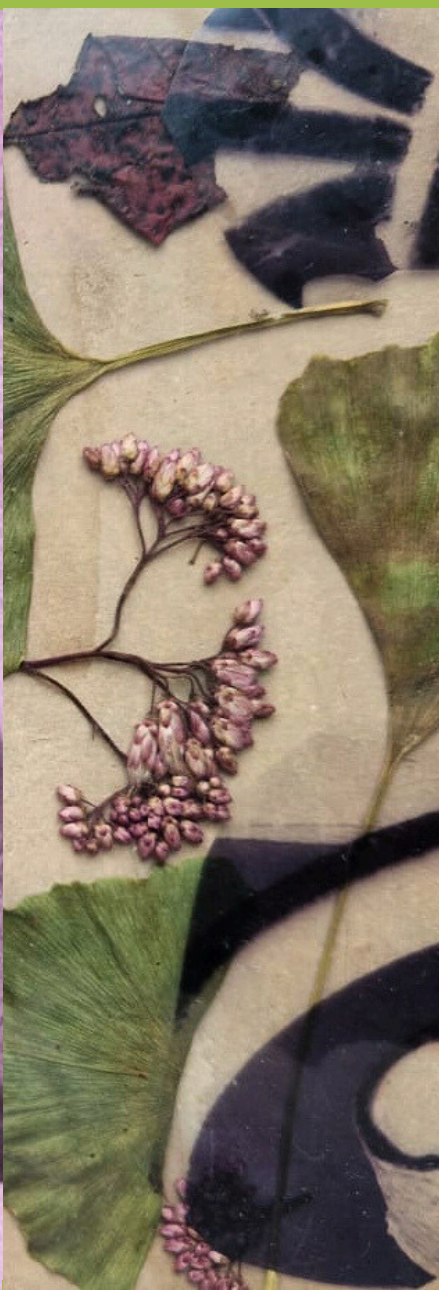
Instagram - @helenduncanart

Facebook - @helenduncanart

Website - www.helenduncanart.com

MARIA MOLLOHAN

PRINTMAKER



Socials

Instagram - @mariamollohanartist

Facebook - @mariamollohanartist

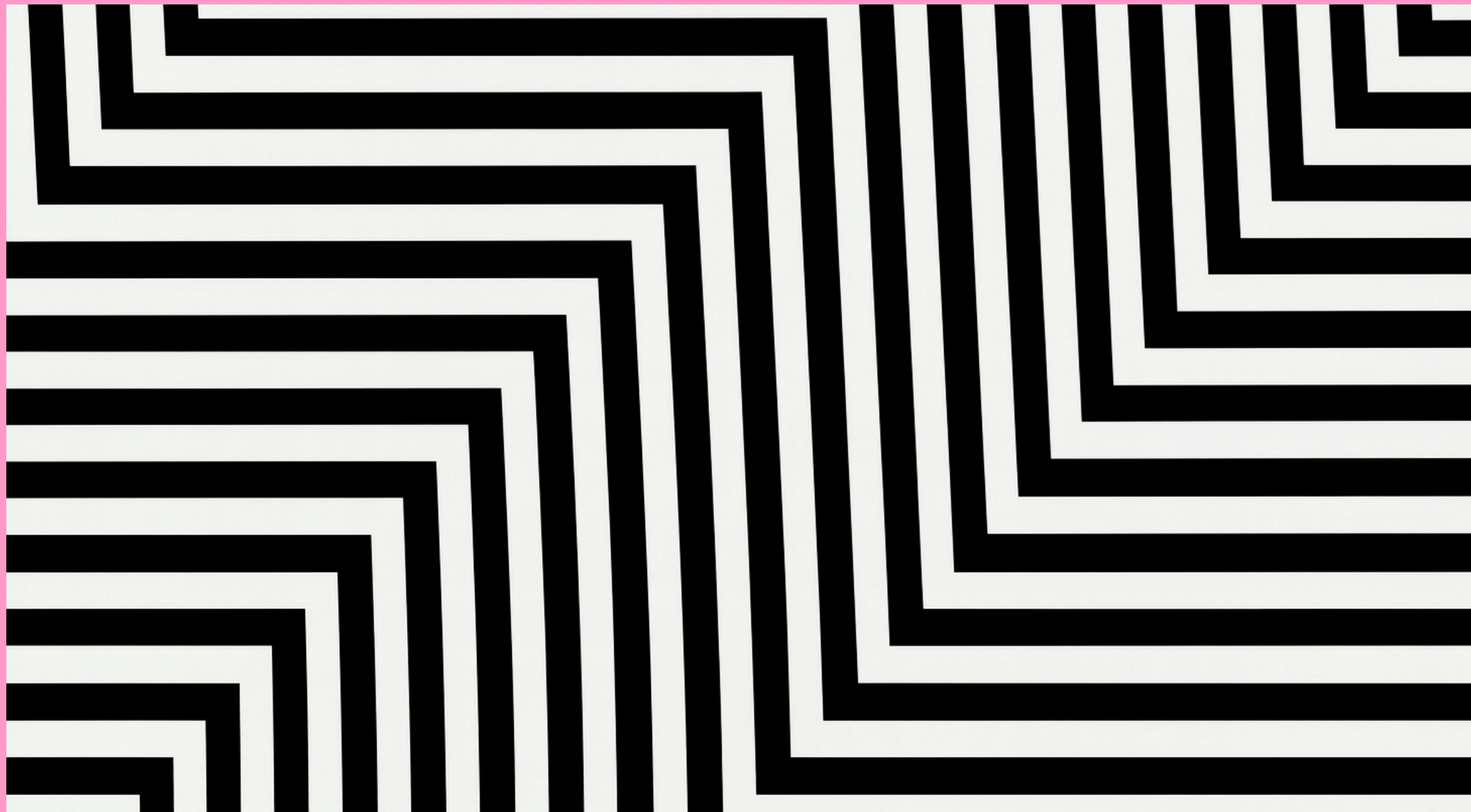
IN LIGHT OF US

This work is a participatory, lens-based artwork installed on transparent acrylic panels. Referencing the barriered vision of the COVID era, it aims to replace fear with curiosity. Drawing on childhood games, it invites the public to reimagine sight, connection, and memory. Using Anthotype prints (photographic print using natural pigments found in plants, flowers, or vegetables) the work engages playfully with park portraits. Ephemeral by nature, they will slowly fade with the outdoor light and evolve over time, echoing memory and perception. Hanging mirrors also fragment the work into the surroundings. As part of this commission, Maria facilitated two drop-in community workshops about the printing process of her work.

Maria is an emerging, multidisciplinary artist and printmaker born in Roscommon who retrained in contemporary printmaking in 2019. Working across photography, experimental print and participatory practice, her work engages community, nature, and memory.

NICKIE HARRINGTON

VISUAL ARTIST



ECHO ZONE

This installation mirrors the natural curve of the Amphitheatre space at Loughnaneane Park. A series of hand-painted panels stand vertically, forming stepped patterns that shift with perspective. Bold black-and-white geometric linework evokes rhythm, soundwaves and visual echoes. In daylight, there is striking contrast and dynamic spatial movement. After dark, UV floodlights reveal a hidden dimension — transforming the work into an immersive, luminous experience. Designed to captivate by both day and night, Echo Zone invites interaction, reflection, and visual play.

Based in Roscommon, Nickie is known for her bold geometric abstractions. Through sharp pattern and clean lines, optical illusions draw viewers in. Her studio practice includes painting on shaped panels and surfaces and her large-scale works are site-specific. Nickie has exhibited widely both in Ireland and internationally, with organisations such as CIAS, Ranelagh Arts, Gallery X, Propeller, and Outset.

Socials

Instagram - @nickieharrington.art

Facebook - @nickieharringtonart

Website - www.nickieharringtonart.com



ART *in the* Open

Whether you're a visitor or a local rediscovering the town, this unique trial offers a FREE opportunity to find out more about Roscommon's Public Art. Perfect for families, art and nature lovers, and explorers of all ages.

Art in the Open is a series of commissions for Culture Night 2025, funded through Roscommon's Public Art Programme. They aim to support local emerging artists to engage and experiment with temporary Public Art. Artists were briefed to respond creatively to Loughnaneane Park.

This event also provides a space for the local community to chat about and be inspired by Public Art.

SHARE AND TAG YOUR PHOTOS WITH:

#RoscommonPublicArt

#CultureNight #OícheChultúir



**CULTURE
NIGHT**

