



Comhairle Contae
Ros Comáin
Roscommon
County Council



Gníomhalthe ar Son
na hAeráide Ros Comáin
Climate Action
Roscommon



Rialtas na hÉireann
Government of Ireland



Roscommon County Council Local Authority Climate Action Plan 2024-2029 Implementation Report 2025

Climate Action Unit
ROSCOMMON COUNTY COUNCIL
MARCH 2026

Contents

1. Introduction	2
1.1 Methodology and Format of Report.....	2
2. Climate Actions Progress Summary	3
3. Delivery Across Services.....	4
4. Leadership and Governance.....	5
4.1 Case Study: Roscommon Library Services – Mainstreaming of Climate Action	7
5. Climate Mitigation Targets.....	9
5.1 Case Study: Energy Efficiency and Emissions reduction in Roscommon County Council.....	15
6. Climate Adaptation and Resilience	17
6.1 Case study: Community Resilience Toolkit.....	20
7. Community Engagement and Activation	22
7.1 Case Study: Community Climate Action Programme Phase 1	26
8. Conclusions	27

1. Introduction

This is the second progress report of the Roscommon County Council Local Authority Climate Action Plan 2024-2029 (LACAP). This progress report reflects the plan implementation period from February 2025 to January 2026, in line with the annual milestone of the adoption of the plan by elected members of Roscommon County Council.

This report offers an overview of progress in the second year of the plan implementation against the ambition of the plan, aligned to the Government's National Climate Objective to achieve the transition to a climate resilient, biodiversity rich, environmentally sustainable and climate neutral economy by 2050 and in relation to the UN Sustainable Development Goals.

1.1 Methodology and Format of Report

The format of this report is informed by the reporting requirements for Local Authority Climate Action Plans (LACAP), the Roscommon County Council LACAP, recommendations of broader sustainability reporting frameworks¹ and alignment with Agenda 2030 United Nations Sustainable Development Goals (UN SDGs). The report provides a summary covering actions of the LACAP delivered and commenced in 2025 at Section 2, and the presents information in line with the following strategic commitments in the sections that follow:

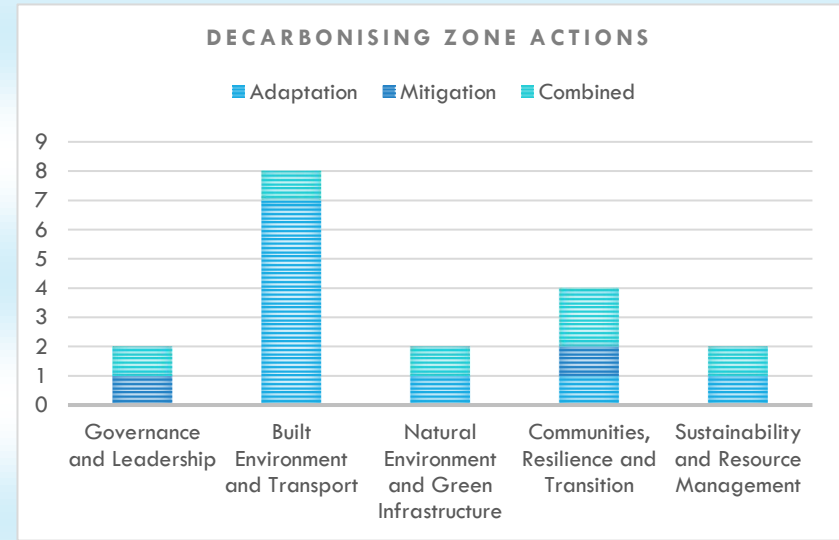
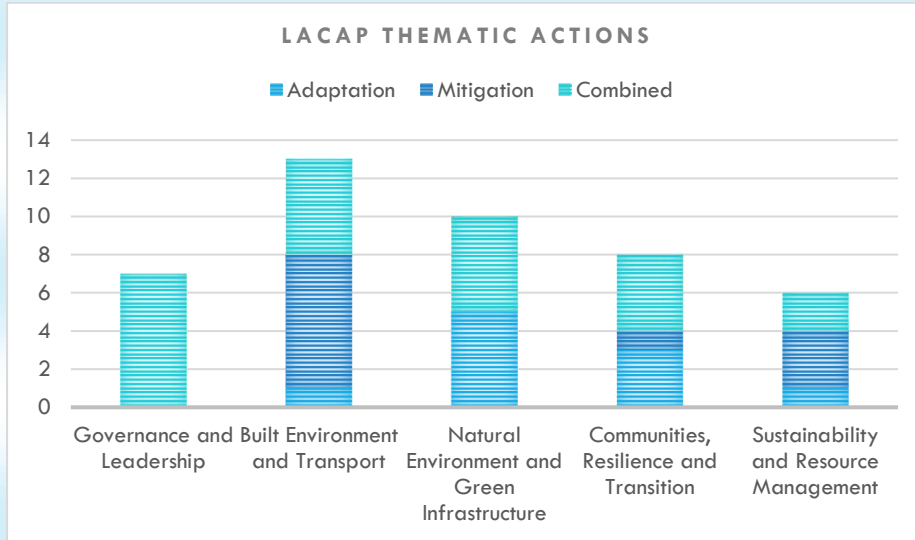
- Delivery across Services
- Governance and Leadership
- Climate Mitigation Targets
- Climate Adaptation Goals
- Community Engagement and Activation

The tables in each section reflect how climate action has been embedded and progressed throughout all departments within the Local Authority. Case studies are provided to highlight the tangible value of actions being undertaken.

¹ Including Environmental Social Governance (ESG) Frameworks and Corporate Sustainability Reporting Directive (CSRD) standards.

2. Climate Actions Progress Summary

The following charts outline thematic action areas and define adaptation, mitigation and combined actions under each theme and progress to date.



	Governance and Leadership		Built environment and Transport		Natural Environment and Green Infrastructure		Communities, Resilience and Transition		Sustainability and Resource Management	
	Gen	DZ	Gen	DZ	Gen	DZ	Gen	DZ	Gen	DZ
Actions commenced	7	2	13	8	9	2	8	4	6	2
Actions Completed to date	2	1	2	3	4	2	2	1	3	0
Actions Commenced that will be Completed after 2025	6*	2*	10 (8*)	8*	5 (9*)	2*	6 (8*)	4*	0(6*)	2*
Actions to be commenced after 2025	0	0	0	0	1	0	0	0	0	0

*Recurring

3. Delivery Across Services

The diverse range of services and functions progress climate action through various policy areas, to support, facilitate and enable government departments, agencies and stakeholders to meet their climate goals at the local level and influence the value chain through Green Public Procurement.

This second implementation report highlights the degree to which climate actions have been explicitly embedded within the operations and functions of Roscommon County Council including the governance structures and procedures established to facilitate this process. The following sections outline the interaction between departments in support of the national climate objective in respect of each action and the corresponding contribution to the Sustainable Development Goals in each instance.

The establishment of five thematic subcommittees to promote cross-departmental coordination and information sharing has significantly promoted the development of this process, operating across:

- Agriculture and Rural Development
- Transport and Green Infrastructure
- Climate Action Training
- Community and Procurement
- Low Carbon and the Circular Economy

These subcommittees are chaired by Senior Officers that report quarterly into the Climate Action Team. Case studies are provided under each section, providing details on specific actions undertaken over the course of 2025 across a range of departments.

4. Leadership and Governance

The following table highlights oversight and procedural aspects of integrating climate related matters into governance processes, business and operational models, including organisational and local policy instruments as appropriate.

The Case study that follows on Library Services highlights the mainstreaming of climate action through service delivery over the course of 2025.

Action	Progress 2025	Main SDGs Addressed
<p>GL 1 - Prepare and adopt Roscommon County LACAP in accordance with obligations and to highlight organisational commitment to carbon neutral transition, to periodically review actions to ensure alignment with higher order plans, in line with emerging findings on future climate impacts and new technologies and ensure that relevant findings at local level are fed upwards into national level policy and decision-making</p>	<ul style="list-style-type: none"> LACAP adopted in January 2024. Submissions made where relevant to higher order plans and policies in the context of adopted plan. Ongoing mainstreaming of climate considerations throughout RCC activities and operations through tracking and mapping system development and establishment of cross-departmental subcommittees 	
<p>GL 2 - Engage with the existing range of community capacity building supports to progress Climate Action initiatives in a consolidated way, ensure that stakeholders can engage with support service providers, funding streams and tailored advice to develop, mobilise and deliver projects.</p>	<ul style="list-style-type: none"> Roll out of CCAP with extensive community engagement and capacity building. Liaison with Arts office, GRETB, LEADER, PPN and other organisations on targeted training for community groups Ongoing work with SEAL on the development of SECs and information dissemination Roll out of Climate conversations with Jacinta Barrins in conjunction with Age Friendly and healthy Ireland Hosting of Mount Lucas Rig and energy showcase Representation on LEADER evaluation committee Representation on culture committee, progressing climate and heritage elements of creative Ireland funding EAO continues to rollout comprehensive awareness programmes on green schools, waste management, biodiversity awareness (See also SRM 2) Climate Unit information sessions at bi-annual PPN plenaries 	

<p>GL 3 -Make Climate Action reporting a standing item at Council, MD and management meetings to maintain visibility, mainstream consideration and deliver on agreed actions</p>	<ul style="list-style-type: none"> • Climate action team subcommittees developed and operational across five thematic areas – acting as working groups progressing individual actions and reporting into quarterly CAT meetings • Climate maintained as a standing Item at Council meetings, quarterly management reports. • Climate established as a standing Item at management meetings. • Budgetary provisions made across all departments in the delivery of climate-related initiatives. • Roll out of GPP guidance and training within the organisation 	
<p>GL 4 - Roll out a targeted training programme for elected members, staff and contractors on the climate considerations relevant to their area of operation to create awareness and promote sustainable behaviours</p>	<ul style="list-style-type: none"> • Targeted training programme for elected members with LASNTG and AILG • Ongoing targeted staff training with LASNTG • Development of mobility plan with NTA 	
<p>DZ 3 - RCC will roll out internal capacity building initiatives to equip employees with the knowledge and skills to promote decarbonisation in the DZ</p>		
<p>GL 5- Incorporate Climate as a standing item in the Integrated Performance management and H&S induction/update systems throughout all sections to maintain profile and implement climate-related actions. Measure and monitor the implementation of Climate Actions as part of a digital, centralised, streamlined tracking and monitoring system for all statutory plans.</p>	<ul style="list-style-type: none"> • Climate Action incorporated into IPM system and H&S induction documents • Tracking system operational and being refined 	
<p>GL 6- Develop a targeted climate communication strategy within RCC to disseminate Climate Action information including progress on achieving targets, ongoing projects, successes and challenges to maintain profile and awareness, relate local action to global events and potential climate change scenarios to further mainstream the climate agenda</p>	<ul style="list-style-type: none"> • In 2025, RCC social media had 24,789 followers and a reach of 2.3 million, the website had 642,626 views and 49,078 downloads. Updates are in progress for Climate element of website. Internal communications initiatives commenced and ongoing. • Public display of progress in achieving energy efficiency and carbon reduction targets in Council assets in development. 	
<p>GL 7 - Compile a baseline of existing and planned internal initiatives underway in support of Climate Action, including paperless strategy (e-recruitment), waste reduction and segregation, bike-to work, blended working, smarter travel workplaces etc. in addition to larger initiatives in energy and renewables to monitor progress, illustrate achievements to date and highlight where these could be extended and/or improved.</p>	<ul style="list-style-type: none"> • Project underway to map climate elements of council investments and operations countywide and to promote coordinated project development • Investigating deployment of dedicated weather impact reporting tools 	
<p>SRM 1 – Embed Green Procurement into all functional areas of RCC</p>	<ul style="list-style-type: none"> • GPP strategy prepared by procurement section and available to all departments. All tender processes must now adhere to GPP provisions and are monitored by procurement section. 	

CRT 4 - Climate Action proof community grants administered by Roscommon County Council, prioritising projects that can demonstrate improvements in waste minimization, circular economy, energy savings, renewables and behavioural change.

- Staff training provided by LASNTG on the application of GPP
- This process is being applied to grant administration through relevant climate action subcommittees



4.1 Case Study: Roscommon Library Services – Mainstreaming of Climate Action

Over the course of 2025, 99,158 people visited Roscommon Libraries’ service points. This level of contact and engagement is of immense value in reaching all sectors of society, mainstreaming and progressing meaningful climate action. The following represents a snapshot of library initiatives aligned with and supporting LACAP actions:

- Availability of e-books and e-Audiobooks, digital magazines and newspaper services, internet connectivity, and the mobile library. These services maximise accessibility and promote social inclusion and sustainable use of resources, reducing the need to travel and bringing services to users, particularly in rural and/or remote areas.



Mobile Library – featured on Nationwide, May 2025

- Lendable objects prioritise re-use and the circular economy. Initiatives include the library of things and the repair café, hosted by the Library Service in conjunction with the Climate Action Unit. Home Energy Kits are available from all library service points and a new radon monitor lending scheme, where radon monitors will be

available for lending through branch libraries to provide users with a snapshot of radon levels is due to launch in Q1 2026.

- Sense-Ability lending collection aimed at supporting neurodivergent individuals and people with additional needs. The sensory toy and equipment lending collection supports climate action by reducing waste and overconsumption, as families can borrow specialised items instead of purchasing products that may only be needed for short periods. It also promotes a circular economy by keeping high-quality resources in long-term community use, lowering the carbon footprint associated with production and disposal.
- Dillon House was completed and handed over to Library services. Supported by the SEAI Pathfinder programme, this heritage building is now an exemplar of energy efficiency and sustainable resource use. Future projects include retrofits to Roscommon and Boyle Libraries.
- Ballaghaderreen Library – Art exhibition to celebrate national Tree Week



National Tree Week, Ballaghaderreen

- Skills for Life initiative – first event held “every crumb counts” reduce food waste but not taste hosted in Roscommon Library. Other initiatives include talks on sustainable living, Decluttering and Eco-soap making
- Clothing swaps – successful Halloween costume swap event, followed by Christmas jumper initiative promoting reuse. Will be expanded to other libraries in 2026.

The Library service has an ongoing and expanding programme of engagement, events and initiatives and continues to work with the climate unit in the mainstreaming and promotion of climate mitigation, adaptation, resilience and biodiversity enhancement in County Roscommon.



Teenage Library



Adult Fiction and Reading Area



Mural in Ballaghaderreen Library by Annmarie Murray



Public Art by Annmarie Murray



Children's Library Ballaghaderreen

Ballaghaderreen Library, Dillon House. Opened July 2025

5. Climate Mitigation Targets

The following table outlines progress on climate mitigation actions over the course of 2025. The Case study that follows details work carried out to date on energy efficiency improvement in Áras and Chontae, and outlines how Roscommon County Council are delivering on emission reduction targets established by national climate policy for all public sector entities in line with reporting methodology of the Sustainable Energy Authority of Ireland (SEAI).

Action	Progress 2025	Main SDGs Addressed
BET 1 -Ensure that all new Local Authority Buildings are designed to meet Net Zero Carbon using new innovative construction techniques, products, and processes. Identify a pilot building project to establish RCC as an exemplar of best practice	<p>Extensive work has been done on retrofits & upgrades of RCC Buildings (see also BET 2 and Case Study)</p> <p>Ongoing projects across RCC departments are incorporating the principles of Net Zero design. Current projects in design stage include</p> <ul style="list-style-type: none"> iRos building, Hodson Bay Lough Key Ballaghaderreen Community Hub <p>(See BET 3 for Social Housing retrofits)</p>	
BET 2 - Implement prioritised SEAI Pathfinder projects in RCC including Aras an Chontae, Dillon House Library, Roscommon Leisure Centre, Roscommon Arts Centre and Roscommon Library and progress remaining buildings identified in Energy Audit process, prioritising significant energy users. Progress Public Lighting Energy Efficiency Project in support of energy efficient public lighting. Incorporate additional energy saving measures in consultation with local communities; having due regard to protected species, biodiversity, European Sites and the need to appropriately conserve protected structures.	<ul style="list-style-type: none"> Energy efficiency advanced in Áras building with LED replacement completed. Installation of PV panels and biogas heating system currently in development to bring building toward operational net-zero (See Case Study) Dillon House works completed Leisure centre integrated design team progressing retrofit proposals Retrofit work ongoing in Roscommon Library Public Lighting LED retrofit at 93% and illustrating significant savings (€13-20k p/a) Potential “Dark Skies” pilot in Roscommon town in development to promote biodiversity and reduce emissions 	
DZ 10 - RCC will utilise the ‘Gap to Target’ tool and the Building Pathfinder Programme to support Public Sector building retrofits and potential for renewable energy heat sources should be explored including the use of renewable gas as well as district heating opportunities to reduce energy consumption and carbon emissions at public buildings, having due regard to environmental sensitivities such as European Sites and biodiversity related sensitivities, sensitive human receptors and the need appropriately protected and conserve heritage features.		
BET 3 -Manage energy efficiency and vacancy levels in Local Authority housing stock in accordance with the Housing Strategy and national retrofit programme. Include energy awareness and management information in pre-tenancy training and to existing and prospective tenants as part of retrofits/energy upgrades where applicable; having due regard to protected species, biodiversity, European Sites and the need to appropriately conserve protected structures.	<p>Energy retrofits were carried out to 73 properties over the course of 2025, resulting in BER upgrades as follows</p> <ul style="list-style-type: none"> 2 to A1 44 to A2 14 to A3 13 to B1 <p>New tenants continue to receive training and information on energy efficiency and sustainability, while support and training on</p>	

DZ 7 - Target existing and proposed and/or new RCC residential developments to optimise energy efficiencies and carbon emissions reductions, including roll-out of energy management systems and smart meters to council owned social housing. Develop targeted education programmes for new technology users in effective energy management as part of pre-tenancy training in housing, having due regard to environmental sensitivities such as European Sites and biodiversity related sensitivities, sensitive human receptors and the need appropriately protected and conserve heritage features.

heating system operation and maintenance is currently being rolled out by a caretaker.



BET 4 -Promote the development of suitable alternative energy projects in appropriate areas, including on degraded lands in RCC ownership (e.g. historic landfill sites) and particularly those developed and run by communities aligned with the SEC programme and in accordance with the adopted RCC renewable energy strategy (CDP); having due regard to landscape and visual amenity and environmental sensitivities such as biodiversity, noise environment, air environment and European Sites, where it is confirmed through a glint and glare assessment that any solar development will not have any potential glint and glare impact on sensitive receptors, or otherwise, where it is confirmed that any solar development constitutes exempted development under the Planning and Development Regulations by virtue of its size or location outside a Solar Safeguarding Zone.

The climate section continue to engage with SEAI mentors to promote the establishment of SECs throughout the County. There were five energy masterplans in preparation by SECs throughout the county over the course of 2025, covering a range of applications and scales. A good example of progress in this area is the use of solar energy in group water scheme energy applications to reduce cost and energy use. This is already established in one instance and in progress through energy masterplanning in another. This will be progressed further in association with NEGI 9 (source protection) and through existing contacts with group water schemes. The potential overlap with the DIY wind turbine course on the installation of alternative energy in remote areas to promote sustainable energy use and resilience will also be investigated.

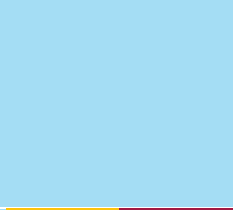


BET 7 - Review RCC fleet management and composition in the context of required emissions reductions and in accordance with the Reimagining Fleet strategy. Implement changes in line with recommendations. Provide training on fleet operation including emissions reducing measures and promote fleet sustainability.

- Hydrotreated Vegetable Oil (HVO) now incorporated into HVO fleet, 90% by end 2025.
- 5 depots with HVO fuelling stations and investigating potential EV charging facilities
- Potential of adding smaller EV vans into fleet
- Eco-driving training for drivers in development



BET 8 - Investigate the potential for the extension of the EV and renewable CNG networks and provision of alternatives to the current diesel fuelled HGV fleet, having due regard to relevant environmental sensitivities and available grid/main capacity. RCC opposes the use of gas from fracked sources in the fuel mix.



BET 9 - Review modal split for staff and Council activities through the development and implementation of a Workplace Travel Plan in conjunction with NTA Smarter Workplaces. Develop a pilot Mobility Hub project for RCC staff in this regard and apply learning to potential external initiatives, having due regard to environmental sensitivities such as the receiving water environment, biodiversity, European sites, sensitive human receptors and traffic and transport conditions

- Engaging with NTA smarter workplaces in the development of a Workplace travel Plan
- Climate unit EV in place, developing internal booking system for potential use as pool car to reduce business use emissions
- Ev maintenance and repair course in place to enhance maintenance infrastructure and promote the use of EV's generally in line with national mitigation targets
- Blended working policy and teams meeting ongoing in support of sustainable mobility



BET 10 - In line with EV strategy findings and recommendations, facilitate enhanced access to charging infrastructure throughout the County, having due regard to relevant environmental sensitivities and available grid/mains capacity.

DZ 14 – RCC will examine investment in EV, the potential for increased charging facilities and optimum location for these in association with local businesses and communities, having due regard to environmental sensitivities such as heritage, biodiversity, European sites, sensitive human receptors and available Grid capacity

BET 11 - Facilitate the prioritised expansion of active travel projects in line with NTA/TFI strategy in high impact urban areas such as Roscommon Town and Athlone. Facilitate the expansion of the local link network in line with the National Transport Investment Framework, Transport for Ireland Strategy and smarter travel initiatives, including advancement of decarbonisation (alternative fuels), physical infrastructure (bus stops, linked cycle and walkways), digital technologies (streamline timetables, payment methods), target dedicated service provision (e.g. education, healthcare, employment, rural) alignment with national, regional and local services and promotion of modal shift. Promote - through control or influence as appropriate - the carrying out of development supported by this action in a manner that has due regard to: relevant environmental sensitivities, including European sites; and opportunities to promote nature-based solutions and Sustainable Drainage Systems.

- The EV strategy for Region 2 (Offaly, Westmeath, Longford, Roscommon and Laois). is expected to be finalised and published in Q1 of 2026.
- The construction of an EV recharge Hub in the Aras an Chontae in Roscommon Town is to commence in Q1 2026 and will provide a rapid dual 150KW charger and 3 dual 22KW chargers, serving 8 car parking spaces. This is a pilot scheme in relation to installation of EV hubs at existing public buildings in Ireland funded by ZEVI.
- The roll out of Light Duty Vehicle (LDV)2 has commenced with rapid chargers being installed in Tarmonbarry and Strokestown. Chargers will also be installed in Ballinlough, Boyle and Roscommon(Abbeytown).
- Five sports clubs have been included on the ZEVI Shared Island Sports Club EV Charging Scheme. Conditions are currently being agreed between the clubs and Control Point Operators in relation to installation of 50KW chargers at the facilities.

- A wide range of Active travel projects were advanced over the course of 2025, including:
- Initiation of N5 routes at Bellanagare, Frenchpark, Strokestown, Tuls and Rathcroghan
 - Ballaghaderreen
 - Roscommon Town Schools pedestrian/cycle bridge
 - Bealnamullia Active travel Scheme
 - Castle Lane permeability link
 - Station Road pedestrian enhancement
 - Carrick-on-Shannon Train Station pedestrian enhancement (in association with Age Friendly Roscommon)
 - Claremount (Ballyforan)
 - Curraghboy
- Funding applications are in progress to integrate Nature-based solutions into 2026 work programme (BET 5)
- Safe Routes to School are being progressed in:
- Croghan
 - St. Michael's/St Patrick's Cootehall
 - Carrick Road, Boyle



DZ 13 - RCC will engage with rural transport service providers and communities to explore the most effective ways in which they meet the needs of communities and improve and promote public transport and active travel. RCC will promote the expansion of smarter travel workplace mobility strategies across the DZ area.

- St. Attracta's Ballaghaderreen
 - St. Patrick's Ballyfarnon
 - Brusna, Ballaghaderreen
 - Camcloon, Ballydangan
 - Cornafulla
 - St. Ciaran's Moore
- Active travel continue to engage with the NTA on local bus routes and associated facilities.
- Greenways are being progressed in association with TII at :
- Lough Key to Carrick-on-Shannon
 - Mid-Shannon – Ballyleague, Tarmonbarry, Strokestown, Rooskey
 - Lough Ree Greenway
- These are in addition to and complement other regeneration, tourism and community projects (for example, URDF, RRDF, ORIS) progressed over the course of 2025 that address sustainable rural regeneration

BET 12 - Implement urban place making initiatives, including the reuse and regeneration of vacant, underused and derelict sites in the urban areas throughout the county in accordance with the CDP, LAPs and emerging Town Centre First policy promoting compact urban growth and vibrancy, facilitating modal shift and creating destination assets to focus benefits of regenerative tourism and protect amenity and heritage assets, having due regard to protected species, biodiversity, European sites and the need to appropriately conserve protected structures.

- A comprehensive programme of capital works is underway under a range of funding streams that are in line with BET 1, 2 & 12. These initiatives directly promote compact urban growth, modal shift, concentration of resources and town centre vibrancy and include:
- URDF III – seven sites in Roscommon town identified for purchase and renewal. Four activated to date.
 - URDF – Spokes and Wheel – located in Roscommon, design work complete and western section to go to construction tender Q1 2026. Incorporates principles of compact urban development, sustainable mobility and nature-based solutions
 - Town Center First plans in Castlerea, Strokestown complete and in implementation phase.
 - IROs project – detailed design and planning process carried out – DZ town centre development



DZ 12 - Engage with the planning, roads, Town Regeneration, Economic Development & Tourism and Capital Implementation Teams of RCC in the development, design and funding of town centre projects to reduce the need to travel in the urban area and to promote availability and uptake of public transport in support of a pedestrian-focussed town centre. Implement the design manual for Urban Roads and Streets in support of pedestrian priority zones and reduction of vehicular dominance in the town centre and residential areas. Promote the carrying out of development supported by this action in a manner that has due regard to environmental sensitivities such as the receiving water environment, biodiversity, European sites and local air quality.

These initiatives are supported by active travel interventions (see BET 11), community initiatives such as the Community Recognition fund and tidy towns amenity grants.

SRM 3 - Engage with Teagasc and the agricultural community on the potential for emissions reduction, biodiversity enhancement and environmental pollution prevention in conjunction with existing agri-environmental schemes and through the application of innovative technologies in waste management and renewable energy generation

- 74 farm inspections were carried out by the Environment section in 2025. Ongoing consultation with farming community provides tailored advice in terms of planning applications and complaint resolution.
- DIY wind turbine construction course ongoing 2025/26 in association with GRETB to



<p>NEGI 6 - Engage with external stakeholders, including semi-state bodies, communities, NGOs and private developers to realise renewable energy ambitions and agricultural emissions reductions set out at national, regional and local level, whilst advocating and exerting influence to ensure such projects promote climate action co-benefits and do not contravene relevant environmental protection criteria or cause significant negative environmental effects.</p>	<p>promote uptake of renewable energy in rural areas and enhance resilience</p> <ul style="list-style-type: none"> Strand 1/Phase 1 of the community climate action programme provided funding to farming Rathcroghan in support of this action 	
<p>DZ 18 - Investigate potential collaboration with agricultural operators within the DZ on the potential to monitor and reduce GHG emissions in collaboration with advisory agencies and 3rd level institutions.</p>		
<p>SRM 6 - Prioritise Climate Action based interventions in locations when greatest emissions savings can be achieved, such as EV charging in town centres, prioritising reuse of existing built fabric where services and infrastructure are in place, reuse existing paving/building material where possible and in line with relevant specifications, having due regard to environmental sensitivities such as the receiving water environment, biodiversity, European Sites, local air quality.</p>	<ul style="list-style-type: none"> The Climate section engaged with all capital departments through the subcommittees in support of this action, particularly at project design stage. Ongoing rollout of national broadband plan and WiFi4EU project in support of connected hubs throughout the County <p>The Croí Cónaithe grant is administered by the Housing section and provides support to bring vacant and derelict dwellings back into use. As of Q4 2025,</p> <ul style="list-style-type: none"> 332 grants issued equating to a commitment of €21,109,988 123 grants drawn down at €7,122,598 	
<p>DZ 8 - Explore renewable energy heat sources including the installation of heat pumps at existing residential units as well as new developments and the potential of renewable gas and district heating, having due regard to environmental sensitivities such as European Sites and biodiversity related sensitivities, sensitive human receptors and the need appropriately protected and conserve heritage features</p>	<ul style="list-style-type: none"> The LEO approved 30 “Green for business” grants in 2025, 16 of which were located within the DZ The Climate Unit hosted the Mount Lucas rig in September 2025 that ran two courses on energy retrofits, one for professionals and one for householders looking to improve energy efficiency. A showcase event was held in tandem, attended by SEAI, finance institutions and materials suppliers 	
<p>DZ 9 - In addition to statutory requirements, engage with SEAI on a potential retrofitting programme to promote upgrade of existing commercial premises to optimise the energy efficiency of current building stock, create opportunities for use of renewable energy, including the use of heat pumps and renewable alternatives for commercial buildings, having due regard to environmental sensitivities such as European Sites and biodiversity related sensitivities, sensitive human receptors and the need appropriately protected and conserve heritage features.</p>	<ul style="list-style-type: none"> The heritage section held a course on sensitive retrofit of traditional buildings in October 2025 in the Abbey Hotel with 60 participants. An information leaflet will follow online and on social media early 2026 The Climate unit continue to engage with Roscommon Transition Town SEC on the implementation of their Energy Masterplan, launched in 2025 	
<p>DZ 11 - Engage with owners/occupiers to enhance awareness to develop appropriate knowledge and skills required to enable energy efficiency improvements in heritage buildings, including specialists to help understand, specify and install appropriate retrofitting to reduce carbon footprint while retaining architectural and heritage integrity. Roll out tailored education scheme in this regard and engage with national funding streams for implementation, whilst promoting</p>		

<p>consideration of environmental protection requirements during such works.</p>		
<p>DZ 16 – Initiate a study on the potential for alternative heat sources, including geothermal potential, within the Roscommon Town DZ area for residential, commercial, community and public sector/institutional application</p>	<p>Climate, in association with Assets and Energy management, are preparing a tender for the procurement of consultants to conduct a feasibility study on the potential for District heating in Roscommon Town. This will be funded by the SEAI.</p>	

5.1 Case Study: Energy Efficiency and Emissions reduction in Roscommon County Council

As a Local Authority, Roscommon County Council has the following obligations under the sectoral targets for 2030 set out in the National Climate Action plan:

- 51% reduction in GHG carbon emissions (2016-2018 baseline)
- 50% energy efficiency improvement (2009 baseline)

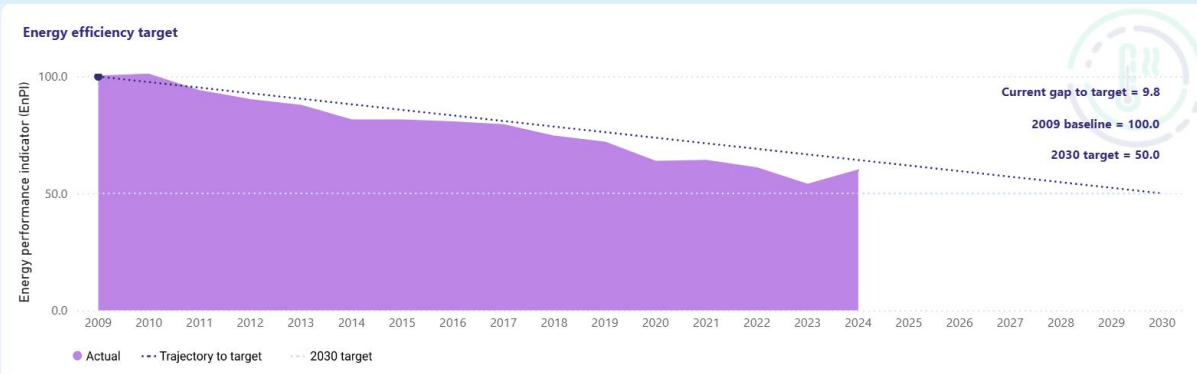
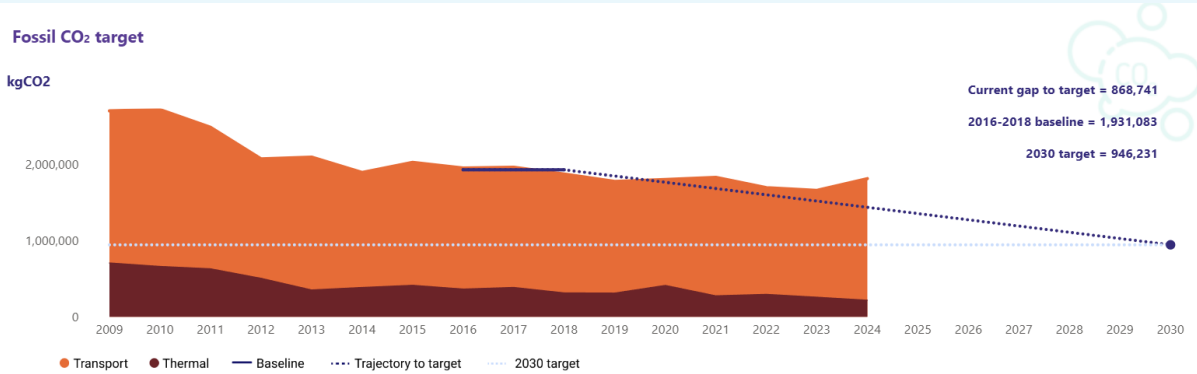
The Assets and Energy management Section of Roscommon County Council report annually to the SEAI through the M&R system on energy performance and progress toward emissions targets. Details have been submitted to SEAI for 2024 and are in the verification process. The following summary highlights main the main points relating to the achievement of these targets:

	<p>Thermal energy (oil, gas, etc.) increased by 40% from 1,489 MWhrs in 2023 to 2,081 MWhrs in 2024. However, it should be noted that this increase is due to a significant increased dependence on wood pellets for heat in the Aras and Roscommon Leisure Centre (wood pellets are considered carbon neutral). Oil and Gas usage decreased by 16% from 1037 MWhrs to 868 MWhrs. Therefore, the net GHG emissions will have decreased.</p>
	<p>Transport Fuels increased by 20% from 6,281 MWhrs in 2023 to 7,535 MWhrs in 2024. This is likely due to pumping in Lough Fuinshinagh. It should be noted that HVO usage increased from 0 MWhrs in 2023 to 382 MWhrs in 2024. The effect of this will be to have partly decarbonised our direct operated fleet.</p>
	<p>Electricity Usage decreased by 2% from 6,870 MWhrs to 6,761 MWhrs. Electricity usage is steady as increased usage of heat pumps (e.g. in Dillon House) is offset by efficiency measures (e.g. LED lighting, Solar PV installation).</p>

- Overall, our **energy consumption** increased from 14,640 MWhrs in 2023 to 16,377 MWhrs in 2024, an increase of 12%. In spite of this increase, which can be attributed to increased pumping in Lough Fuinshinagh, we are still lower than our 2022 levels of 16,570 MWhrs.
- In terms of **energy efficiency**, we are now using 40% less than our baseline year (2009), meaning we are still on track to achieve our 50% reduction by 2030.
- Our **Thermal greenhouse gas emissions** reduced from 1,661,155 kgCO₂ in 2023 to 1,814,972 kgCO₂ in 2024, an increase of 9%.
- Overall, our **greenhouse gas emissions** have reduced from 1,931,083 in our baseline years (2016 – 2018 average) to 1,814,972 in 2024, a net decrease of 6%

These figures are shown in the charts below, which illustrate data returned by Roscommon County Council to the SEAI monitoring and reporting system. We are still maintaining our M&R database.

From the charts, our energy efficiency target appears well within our grasp, however GHG emissions appear to be much more of a challenge for the organisation.



Projects completed in 2024: Dillon House Energy Retrofit – building fabric upgrades and replacement of oil boilers with ASHPs. This will result in a GHG reduction of 10 – 15 tCO₂/annum. This project received SEAI Pathfinder Funding.

Projects completed in 2025: Retrofitting of LED light fittings to all light fixtures in Aras an Chontae. This will result in an annual saving of approximately 65 MWhrs per annum, or 16.25 t/CO₂ per annum.

Projects ongoing for 2026:

- Aras an Chontae – installation of a 90 kW array of solar PV panels to Aras an Chontae. This is projected to save an additional 70 – 80 MWhrs per annum or 17.5 – 20 tCO₂/annum. This project has been approved for SEAI Pathfinder support.
- Roscommon Leisure Centre – Appointment of an Integrated Design Team to lead out on a full retrofit for Roscommon Leisure Centre. This project is being coordinated through the Midlands Energy Agency with the support of SEAI. A recent energy audit has identified numerous energy efficiency measures which could lead to savings of up to 60 tCO₂/annum.

Planned Projects to 2030

- Migration to biogas – The Energy Team will be recommending that all building managers move away from LPG and begin using carbon neutral biogas. This should reduce the GHG footprint of existing buildings such as Civil Defence, Roscommon Fire Station, Boyle Area Office etc.
- Replacement of all kerosene and gas oil boilers with ASHPs or with condensing biogas boilers (e.g. County Library, Castlerea Area Office, etc.).
- Installation of Solar PV arrays to all suitable council buildings
- Continued engagement with the SEAI on the Pathfinder programme.

6. Climate Adaptation and Resilience

The following table details measures to plan for and reduce vulnerability of local authority services and communities to climate change impacts, minimise risks and costs and protect lives and property by building resilience into natural and human systems. A Case Study is provided detailing the Community Resilience toolkit developed by the Community Section in response to the impacts of Storm Éowyn in early 2025.

Action	Progress 2025	Main SDGs Addressed
<p>BET 5 - Utilise nature-based solutions in tandem with biodiversity enhancement measures in RCC operations and the design and management of Roads projects and associated works and in accordance with the Green Infrastructure strategy</p>	<p>There has been extensive collaboration between roads (Active travel and MDs), capital projects, biodiversity and climate in the development of a range of nature-based projects in support of flood alleviation, biodiversity and water quality enhancement and amenity/urban placemaking initiatives. These will be submitted for funding in Q1 2025 (See also BET 11 & 12, DZ 5).</p> <p>The spend on climate change adaptation and resilience works in the roads section was €677,467 in 2025.</p>	
<p>DZ 5 - Prioritise nature-based solutions in the execution of all development within the decarbonisation zone aligned with the National Implementation Strategy for Nature-Based Solutions for the management of rainwater and surface water run-off in urban areas, having due regard to environmental sensitivities such as biodiversity, European sites and water quality.</p>		
<p>BET 6- Embed water conservation measures throughout all RCC buildings.</p>	<p>Water conservation measures are in place in RCC buildings. Awareness campaigns on behavioural change to further reduce water consumption across the organisation will be developed in 2026.</p>	
<p>NEGI 1 - Develop an RCC green infrastructure strategy incorporating policies and programmes across all sections in support of biodiversity and heritage protection and enhancement and associated climate action benefits.</p>	<p>The climate Section applied for funding to progress a green infrastructure strategy and remain on a reserve list for same. Potential funding sources remain under active review. The climate action subcommittees, under the guidance of the climate action team, continue to work across departments to progress biodiversity and heritage protection in conjunction with climate action benefits as part of service delivery and council operations.</p>	
<p>NEGI 2 - Establish holistic linkages between existing, planned and proposed amenity infrastructure and heritage assets within the county to enhance archaeological protection, biodiversity (wildlife corridors), flood resilience (ecosystem services) and increase public awareness (immersion in nature/heritage), whilst promoting the adoption nature-based solutions and SUDs as appropriate, avoidance of habitat fragmentation, and adherence to environmental protection requirements</p>	<p>Activities under this action are outlined at NEGI 1, BET 4, 5 & 12 above. Specific projects include</p> <ul style="list-style-type: none"> potential hydro-morphological feasibility study on the River Jiggy at Roscommon town – application for funding in Q1 2026 Funding provided to Farming Rathcroghan under CCAP in support of climate actions in agriculture and archaeological protection LBAF funding in Loughnaneane park integrating protection of natural heritage, enhancement of biodiversity, flood resilience and amenity 	

<p>NEGI 4 - Promote heritage, biodiversity and climate action awareness in the management and maintenance of Local Authority assets, landbank and properties, compile an inventory of heritage assets within Local Authority ownership and develop conservation/risk management plans as appropriate, including energy efficiency measures</p>	<p>Inventory underway with Assets section – consultants engaged</p>	
<p>NEGI 7 - Establish and coordinate links with relevant state departments, semi-state bodies and advisory agencies in support of the development, application and funding of climate action innovations in operations, service delivery and infrastructural provision (including roads programme) at policy/programme development stage and through targeted education and training programmes in the areas of planning, H&S, roads, regeneration and environment, whilst advocating and exerting influence to ensure projects promote climate action co-benefits and do not contravene relevant environmental protection criteria or cause significant negative environmental effects.</p>	<p>See also BET 5 & 12</p>	
<p>NEGI 8 - Implement the tree management strategy with a focus on native trees to promote enhanced canopy cover within the County including tree protection measures and planting programmes in Local Authority property. Roll out internal training programmes for relevant council staff and contractors and externally for communities, landowners and potential developers on appropriate planting and maintenance for canopy preservation and biodiversity enhancement. Investigate potential system to monitor planting regimes.</p>	<p>Tree management Guidance complete and to be published on RCC website Q1 2026</p>	

DZ 6 - Implement the provisions of the Tree Management Strategy with a focus on native trees, in all RCC functional areas within the DZ to promote canopy health and expansion and enhance ecosystem services and biodiversity.



NEGI 10 - Implement the sustainable management practices for public open spaces report and guidelines in local authority operations and promote education and awareness on the use of herbicides and pesticides to the public and local communities to protect biodiversity and water quality. Training regarding herbicides and pesticides promotes use that does not cause significant effects on the receiving water environment, biodiversity or European sites Highlight danger of invasive species and develop internal and external educational resources on prevention and biodiversity-aware eradication. Ensure that the invasive species educational resource is developed by a competent ecology team.

- Biodiversity officer progressing pilot project on alternative maintenance in Loughnaneane park and Athlone Area MD.
- Glyphosate use administration and monitoring ongoing
- Environment section maintain active on Lough Forbes pesticide action group to prevent exceedances in the catchment



DZ 15 - RCC will progress the development of a waste management strategy for the DZ to facilitate understanding of waste streams within the DZ, supporting effective management at source rather than at end of life.

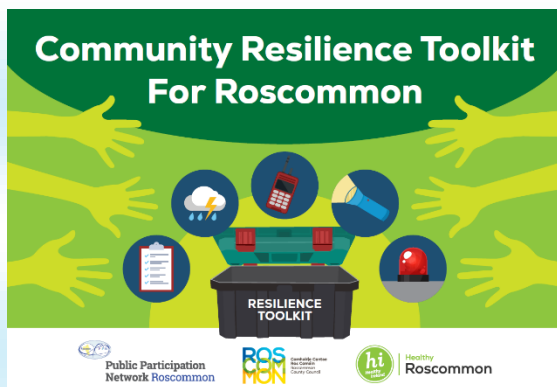
Regional Waste Management Strategy to be finalized and inform local level activities



6.1 Case study: Community Resilience Toolkit

Roscommon County Council – Community Department

Roscommon Public Participation Network (PPN), in partnership with Roscommon County Council’s Community Department, has developed a first of its kind “Community Resilience Toolkit” which is a practical resource designed to help local communities prepare for, respond to and recover from extreme weather events and crisis situations. The toolkit draws on local knowledge, shared community values and evidence-based resilience practices.



The initiative emerged from the county’s coordinated response to Storm Eowyn in January 2025, which caused unprecedented disruption across Roscommon. In the immediate aftermath, the Community Department supported the rapid establishment of 41 Community Support Hubs. These hubs transformed sports clubs, community centres and parish halls into safe, warm and fully equipped resilience spaces. They provided food, water, warmth, device-charging facilities and psychosocial support, ensuring that no resident was left isolated or without essential assistance.

Building on this experience, Roscommon PPN staff and the Healthy Roscommon Co-ordinator led the creation of the Community Resilience Toolkit. This pioneering resource equips communities with structured training, scenario-based learning and adaptable skills to strengthen local preparedness. It also supports the formation of Community Emergency Response Teams (CERTs), enabling communities to organise quickly and coordinate effective responses based on local needs. The model is now attracting national attention as a

best-practice example of bottom-up community resilience.

A core feature of the toolkit is its emphasis on wellbeing and psychological support as essential components of resilience. It is designed as a practical guide for volunteers, community groups and local leaders, helping them communicate, organise and care for one another during storms, floods and other emergencies. By empowering communities with the skills and confidence to act, the initiative strengthens both climate adaptation and the social fabric of Roscommon.

Collaboration, Ongoing Engagement and Co-Design

Collaboration is central to the project’s success. Roscommon PPN and the Local Authority worked closely with community groups, state agencies, local businesses and service providers to ensure the toolkit reflects real community needs. Key engagement activities included:

- Co-design workshops with 12 pilot Community Hubs to shape the toolkit’s content and usability.
- Listening sessions with vulnerable groups to identify barriers to accessibility and inclusion.
- Targeted funding through the LCDC and LEADER programmes to support grassroots climate-resilient projects.

This open, trust-based approach has strengthened civic participation and created a replicable framework now being examined by other counties. It positions the toolkit as a national model for community driven climate resilience.

Innovation and Strategic Impact

Roscommon PPN’s approach blends innovation, practicality and strong community ownership. By combining forward-thinking solutions with grassroots engagement, the model delivers cost-effective, scalable interventions rooted in local realities.



As a result, communities across Roscommon now have greater knowledge, skills and resources to prepare for and recover from climate related emergencies and crises situations. The initiative has enhanced inter-agency coordination, improved local preparedness and inspired other local authorities to adopt similar approaches, demonstrating the power of partnership in supporting communities when they need it most



Representatives of Roscommon’s Local Community Development Committee (LCDC), Roscommon Public Participation Network (PPN) pictured alongside Minister of State, Dr. Martin Daly together with Management and Staff of Roscommon County Council at the official Community Resilience Toolkit launch in Áras an Chontae Roscommon in October 2025. Pic: Gerry O’Loughlin

7. Community Engagement and Activation

This section highlights progress on actions that support community engagement, activity and capacity to build resilience to climate change impacts, reduce energy consumption and emissions and protect, restore and/or enhance biodiversity and work to achieve the objectives of the Decarbonising Zone(s) (DZ). A case study follows on Community Climate Action Programme achievements over the course of 2025.

Action	Progress 2025	Main SDGs Addressed
<p>BET 13 - Continue the Community Climate Action Programme to identify, support and showcase locally based climate action initiatives in line with scheme guidelines/themes. Feed outcomes/results to upwards in support of national policy. (also NEGI 6, BET 4 and SRM 3)</p>	<p>Phase 1 of the community climate action programme substantially complete at the end of 2025 (See Case Study)</p> <ul style="list-style-type: none"> 15 projects were funded across the County representing an investment of €402,000 (Strand 1). An additional two cross-border cooperation projects were funded through the shared island fund (Strand 1A), investing a further €116,000. Strand 2 of the CCAP involved the creation of an online national resource for communities in Decarbonising zones. The climate unit have engaged extensively with the consultants developing this website on the provision of relevant information for Roscommon Town. This will be live in Q1 2026. <p>Phase 2 of the Community Climate Action Programme was launched in Q3 2025. Following an extensive information campaign, 44 applications were received for a total allocation of €402,000. These will be evaluated and submitted to DCEE for approval in Q1 2026.</p>	
<p>NEGI 3 - Engage with stakeholders in peatland and forestry management to align with heritage policy and RCC emergency services fire prevention and response provisions. Prepare guidelines for stakeholder use as appropriate. Engage peatland and forestry stakeholders with initiatives and community projects, identify synergies with JTF programme and areas of "added value" for local communities; whilst advocating and exerting influence to ensure such projects promote climate action co-benefits and do not contravene relevant environmental protection criteria or cause significant negative environmental effects.</p>	<ul style="list-style-type: none"> RCC emergency services engage with SWERT services locally and nationally and apply emerging advice and best practice. Weather impact information services are under review under the relevant subcommittees and these will be evaluated in Q1 2026 JTF opportunities are maintained under review as projects proposed and developed as appropriate. 	
<p>SRM 5 - Develop, enhance and maintain RCC climate risk monitoring systems.</p>		
<p>DZ 4 - Develop a climate change risk and vulnerability assessment against which proposed public and private development within the DZ can be proofed.</p>		
<p>CRT 6 - Collate and act as a repository for evidence-based climate change forecasts and predictions at local level. Assess new findings and incorporate associated best practice into all operational areas</p>		

<p>CRT 3 - Engage with the business community to progress climate action initiatives</p>	<p>In 2025, the Local Enterprise office (LEO) approved 30 “green for business” applications (16 in DZ) and 15 applicants for the energy efficiency grant</p>	
<p>CRT 5 - Support communities in the development of nature-based solutions in line with green infrastructure strategy and source protection guidance in place</p>	<p>The biodiversity officer, with support from the climate section and LAWPRO, is progressing applications with the community for dedicated NbS provisions in Roscommon Town.</p>	
<p>CRT 7 - Identify, engage with and support communities most affected by the just transition process in Roscommon, including those employed in the former peat-based electricity generation and processing and associated peat related industry which has now ceased.</p>	<p>Dedicated DIY wind turbine and EV courses have been developed in conjunction with GRETB. This required the refurbishment and fit-out of a dedicated unit at racecourse road and the purchase of an EV funded by the EU Just Transition fund (managed by EMRA and administered by Pobal) and the Irish Government. By the end of 2025, there had been over 110 participants on the courses with positive feedback. The programme is set to continue up until September 2026. The climate unit continues to monitor funding opportunities targeting communities and groups affected by the energy transition.</p>	
<p>CRT 8 - Identify communities and groups with the potential to be affected by the transition to a low-carbon society as part of overarching national and sectoral policy implementation, including agricultural communities and those employed in associated industries, and including individuals and communities vulnerable to energy poverty. Identify and investigate potential opportunities associated with just transition, including locally based carbon offset initiatives</p>		
<p>CRT 2 - Promote innovation, research and capacity building in the climate action area in conjunction with the local authority departments, communities and external agencies, including 3rd level institutions.</p>		

<p>SRM 2 - Establish links between community organisations at a local level to develop opportunities in the area of waste reduction, reuse and recycling, provide support as appropriate, to progress, develop and/or expand circular economic activities</p>
<p>SRM 4- Develop and implement multi-faceted campaigns on the practical need for behavioural change at all levels, work, home and recreation in order to achieve climate action ambitions.</p>
<p>DZ 2 - RCC will embrace its lead role in minimising waste and embracing circular economy principles and to leverage influence over resident’s behaviours and attitude towards waste and to build capacity in the local and business community to support waste minimisation and the circular economy in Roscommon town and provide support including the provision of buildings and facilities where appropriate, to progress, develop and/or expand circular economic activities</p>
<p>DZ 1 - RCC will develop projects and programmes of Citizen engagement and awareness raising to promote behavioural change across the DZ area, aligned where possible with other RCC initiatives in the areas of regeneration and the circular and night-time economies.</p>

Ongoing work over 2025 by Environmental Awareness officer took place in the following areas:

- National Spring Clean held in April with approximately 3,000 participants
- 5 implementation plans developed for “Greening your festival” in 2025 – promoting sustainability and appropriate waste management
- Greener spaces awards held in December 2025, with 8 schools and 10 community recipients

Anti-dumping initiatives carried out over 2025 to encourage reuse, recycling and reduction included-

- Textile upcycling workshops held in association with Roscommon Women’s Network to reduce textile waste in 2 schools and 4 community settings
- “Know your brown bin” info sessions held at 3 locations throughout the County in September
- Animations on preventing illegal burning issued on social media
- Mywaste “gear-swap” initiative rolled out with sports clubs

Roscommon Library services have an extensive community reach and have run a range of initiatives over 2025 in support of climate action and mainstreaming (see Case Study)

As per GL2 and SRM 1& 2, DZ 17 Sensitive retrofit of heritage buildings course rolled out in October 2025 with 70 participants in Roscommon Town. Information leaflet in preparation for issue on website and social media as a reference resource. Midlands Tidy Town Network Biodiversity training for community groups hosted in Civil defense building April 2025

<p>DZ 17 – develop a register of interested homeowners via EOI to facilitate economies of scale for retrofit projects to promote group access to discounts, green finance and available supports within the DZ area</p>	<p>Ongoing collaboration with SEAI mentors and Roscommon Transition town SEC on implementation of their Energy masterplan. LOETB Mount Lucas Rig was hosted at the Roscommon Arts Centre in September 2025, providing training to the public and energy professionals on domestic energy retrofits and efficiency. A showcase was also held with providers, SEAI and financial institutions for tailored advice on how to progress.</p>	
--	---	--

7.1 Case Study: Community Climate Action Programme Phase 1

Phase 1 of the Community Climate Action Programme (CCAP) was rolled out over the course of 2025, with 13 of the 17 projects completed over this period. The remainder are at an advanced stage and anticipate completion in early Q1 2026. The CCAP supports both direct climate action and capacity building. An initial €30 million was allocated from the Climate Action Fund for Phase 1, with an additional €3 million from the Shared Island Fund for Strand 1a.

Under Phase 1, 15 projects were approved under Strand 1 (€402,000 total funding) and a further €118,000 supported two cross-border

Strand 1a projects led by Roscommon organisations. This phase prioritised community activation — enabling non-profit and voluntary groups to co-design local solutions through workshops, outreach and collaborative planning.

The completed projects addressed a broad range of climate themes, including community energy, greener travel, sustainable purchasing, and improved recycling. Many projects centred on installing solar PV systems, providing communities with quick, visible, and highly effective wins in their local energy transition.

Community Activation Highlights

<p>Workshops</p>	<p>Informal workshops where groups shaped project ideas aligned to local needs.</p>
<p>Outreach & Inclusion</p>	<p>Working closely with the PPN and access-focused organisations enabled targeted engagement that successfully widened participation among diverse community groups.</p>
<p>Partnerships</p>	<p>Cross-community and cross-border collaborations to share knowledge and scale solutions.</p>

Community beneficiaries included community centres and facilities, sports clubs, disability support centres, social enterprises associated with the circular economy and agricultural/biodiversity initiatives.

Strand 2 of the CCAP launched in October 2025 following a wide-ranging engagement campaign with webinars, in person and one-to-one meeting with the community Climate Action Officer. Closing in December 2025, 44

applications had been received from community organisation countywide. This portfolio will be submitted to the Department of Climate Communications and the Environment for evaluation Q1, with decisions anticipated in Q2 2026.

Cross border Community Engagement – Strand 1a

Funded under Strand 1a - Shared Island initiative, Lough Ree Access for All (LRAFA) in Ballyleague, Co. Roscommon, and Belfast Lough Sailability (BLS) in Carrickfergus, Co. Antrim, partnered to deliver a cross-border sustainability project under the Community Climate Action Programme. The 2025 project aimed to improve environmental performance and long-term sustainability across both organisations, which are leaders in providing accessible boating opportunities. Key climate actions included installing 15 kWp Solar PV and 5 kWh battery systems at both sites, replacing fossil-fuel boat engines with electric alternatives, adding bike racks, and installing an EV charger at BLS. Recycling facilities were enhanced, and three community orchards were planted in Ballyleague with local schools and Tidy Towns.

The project delivers significant climate benefits: over 23,000 kWh of renewable electricity per year, annual savings of 3,000 litres of petrol, and a combined CO₂ reduction of over 11,000 kg annually. The initiative also provides high-

visibility demonstrations of solar technology and low-carbon transport, helping communities understand practical climate solutions.

Both organisations benefited from strengthened cross-border cooperation. LRAFA led Solar PV procurement with support from Sustainable Energy Communities, while BLS oversaw electric engine procurement and coordination with authorities in Northern Ireland. Remote

collaboration via email and TEAMS ensured smooth project delivery.



Belfast Sailability

Over 7,500 participants benefited from accessible boating experiences across both organisations in 2025, including people with physical, sensory, intellectual, developmental and neurological disabilities, as well as the wider public. The project enhances operational sustainability and provides a foundation for continued climate awareness activities.

Both partners intend to continue cross-border collaboration, with joint applications underway under the PEACE Plus Changemakers Programme to develop climate action awareness initiatives across communities in Roscommon, Longford, and Northern Ireland.



Lough Ree Acces for All

8. Conclusions

Progress has been made across all actions contained within the LACAP over the 2025 period. Case studies illustrate the tangible benefits of these actions in terms of Mitigation in line with national targets, adaptation, resilience and community engagement across all areas of Council functions services and operations. New funding opportunities and initiatives will be progressed over the course of 2026, establishing tangible responses to these actions and further mainstreaming climate action into the daily lives of the citizens of County Roscommon.