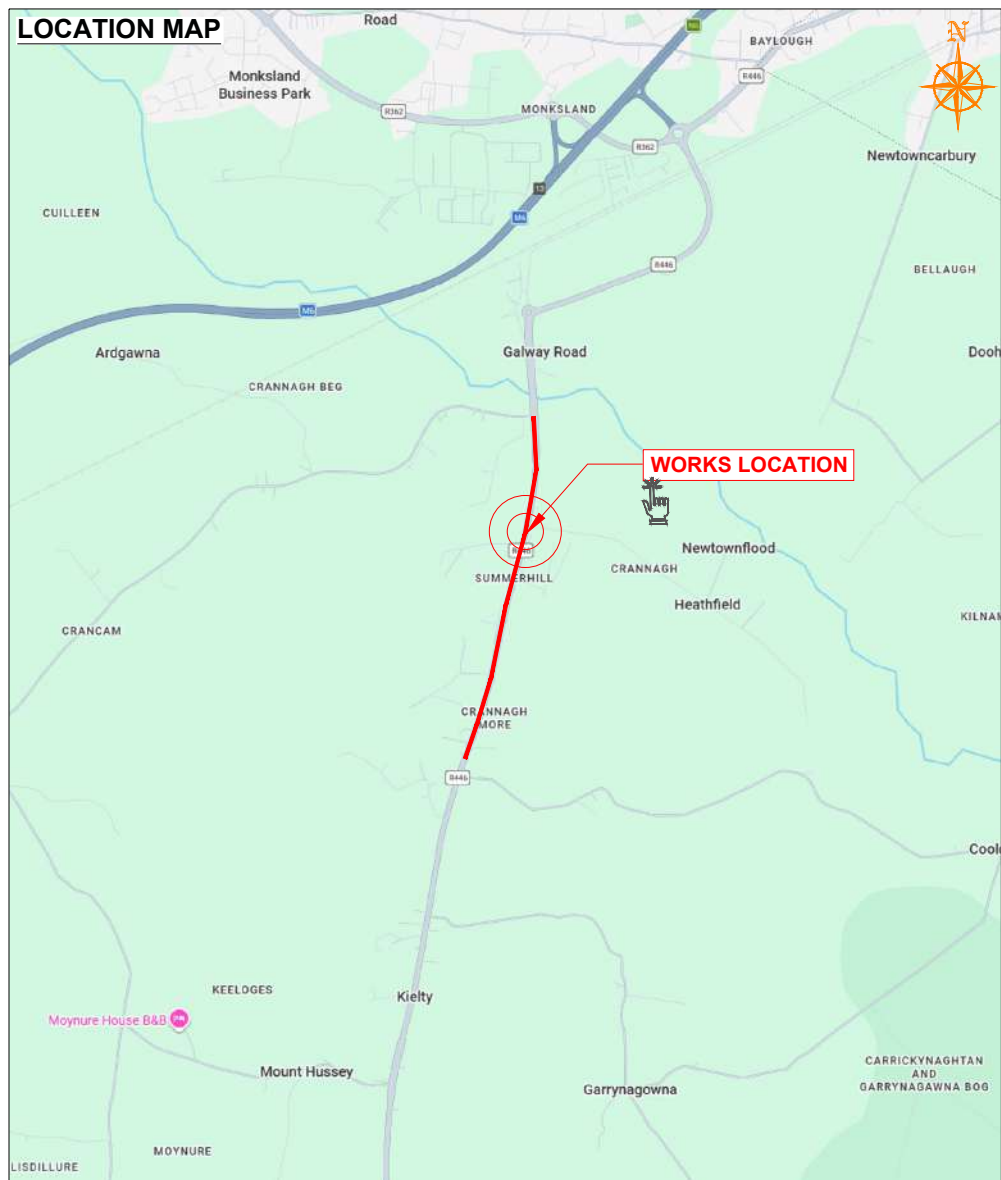
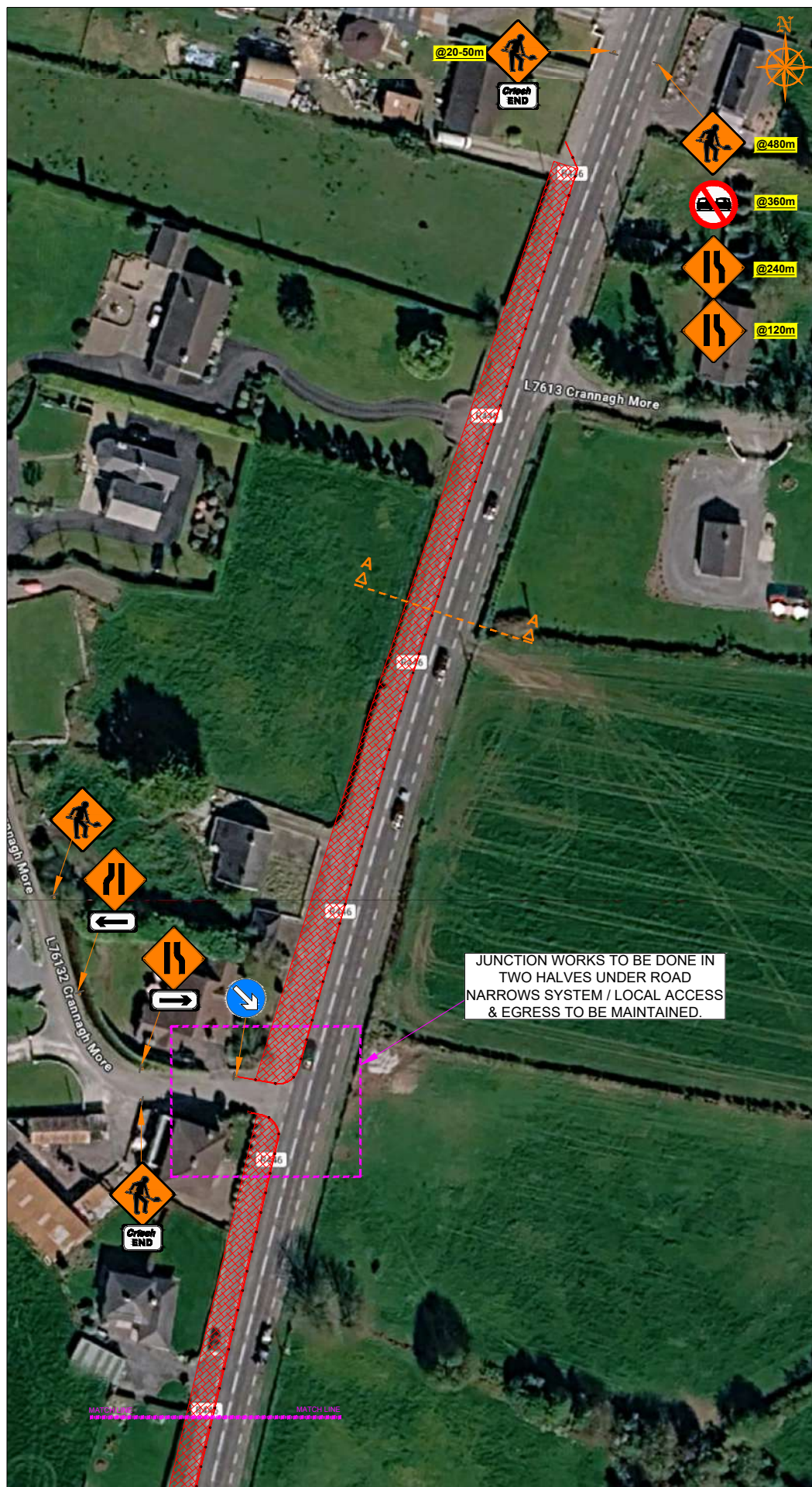
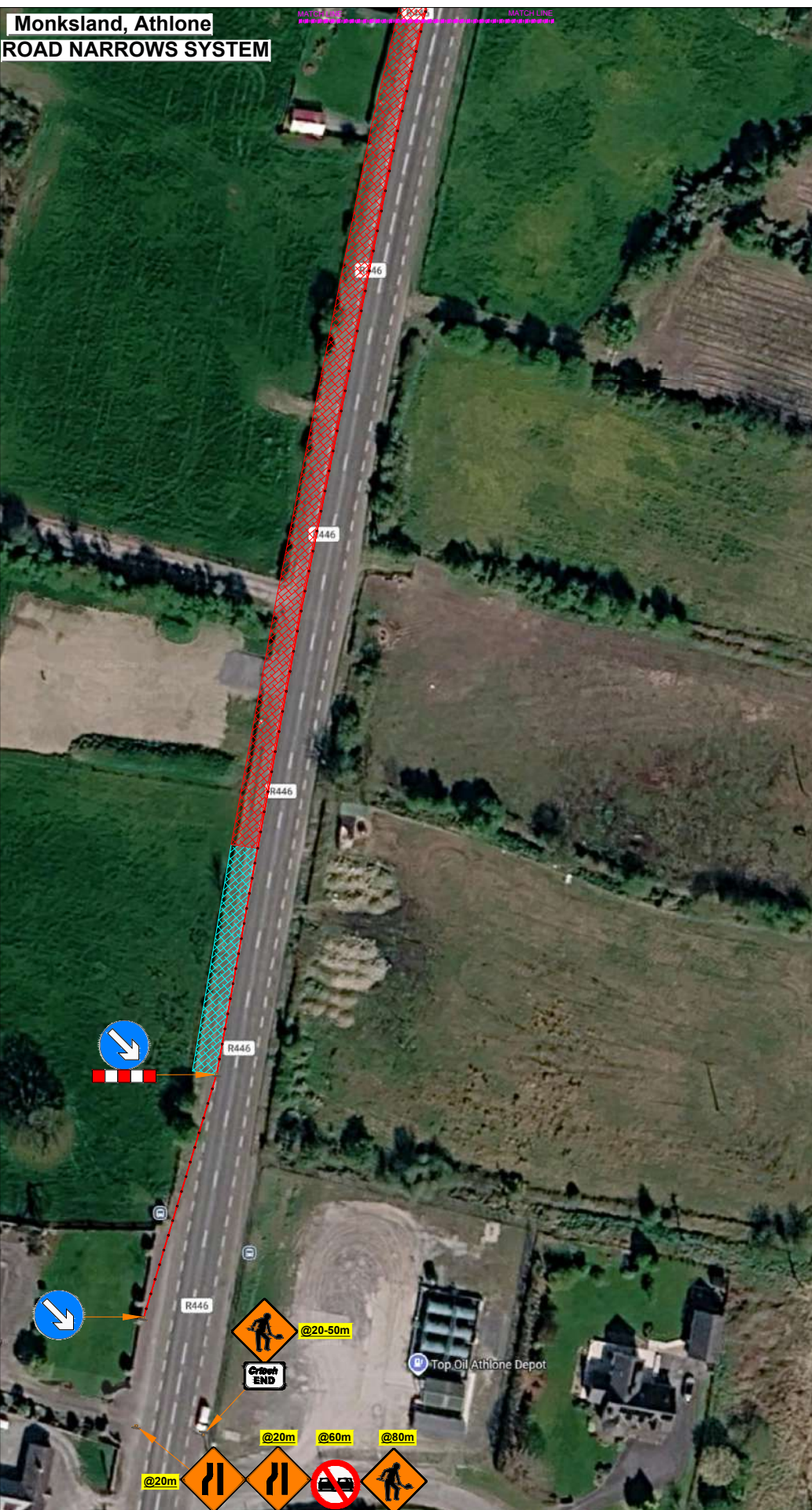
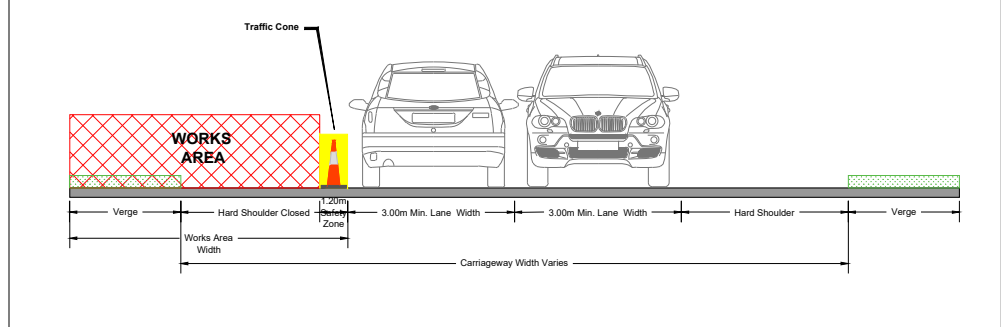


Monksland, Athlone ROAD NARROWS SYSTEM



SECTION A-A



SITE NOTES

- 1) Advance signs to be placed on all approaches to works.
- 2) Exact sign position to be determined on site. Conflicting permanent signs to be obscured for duration of works.
- 3) Exact site access/egress to be determined on site and signed accordingly.
- 4) The optimum lane width for all classes of vehicles is 3.3m. this may be reduced to a minimum of 3m. below this, HGV's and buses must be marshaled past the works. The absolute minimum lane width, if only cars and light vehicles are present, is 2.5m.
- 5) TTM operative present on-site to coordinate safe site entrance/exit, safe crossing of pedestrians by implementing an all stop when required.
- 6) All works to be carried out in accordance with Chapter 8 of the Traffic Signs Manual (2019 Edition) and Temporary Traffic Management Operations Guidance 2019.
- 7) Access to residents/businesses to be maintained at all times. Contractor to notify affected residents in advance of any restrictions.

ROAD CONTROL

Copyright Notes:
This drawing is the property of Road Control Services Ltd. The design information contained herein is strictly confidential. This document is not to be used, reproduced, disclosed or circulated in whole or in part without prior written consent.

CLIENT

DESIGN PARAMETERS		Speed Limit	Road Classification
Advance Warning Signage		80	2(i) Type B <12hours
Sign size	600mm		
Sign Visibility	90m		
Number of Signs	3		
Cumulative Distance	360m		
Distance between Advance Warning Signs	120m		
Taper			
Lane Taper Rate	1 in 40		
Hard Shoulder Taper Rate	1 in 40		
Cones			
Cone Height	750mm		
Taper Spacing	3m		
Longitudinal Spacing	12m		
Safety Zones			
Longitudinal	45m		
Lateral	1.2m		
Lanes			
Lane Width	3.0m		

LEGEND

- Works Area
- Safety Zone
- Traffic sign
- Traffic cones

GENERAL NOTES

- 1) All information contained in this drawing (including digital data) should be checked and verified prior to any stage of construction;
- 2) All works are to be carried out in accordance with local authority requirements and are to be included in the site-specific safety & health plan;
- 3) Site inspections and maintenance of the traffic management layout is to be agreed with local authority to ensure the safety and integrity of the design;
- 4) Contractor to carry out a site risk assessment prior to the installation of any traffic management plan to ensure that conditions reflect those considered for design post submission;
- 5) Contractor shall be responsible for the provision of ramp access at any change in road surface level where traffic runs on a temporary surface, and for pedestrian/cycle ramps where footpath/cycle-ways have a level discontinuity as per result of the works.

Rev	Date	Details	Drn	Chk	App	Drn	DJ	Project
						Chk	SD	Monksland, Athlone
						App	DH	
						Date	15-05-2026	TEMPORARY TRAFFIC MANAGEMENT PLAN ROAD NARROWS SYSTEM
						Scale	NTS @A3	
						Stage	CONSTRUCTION	
						Drawing No	C26002_04_003	Rev 0