

## **Appendix B**

### **AA Screening Report**

**Prepared by MKO Ireland.**



## Appropriate Assessment Screening Report

Project reference	241139 – Proposed Amendments to the Record of Protected Structures for Roscommon in relation to Cargin Demesne, Tulsk, Co. Roscommon
Date	18/12/2024
Statement of Authority	This report has been prepared by Katy Beckett (B.A., M.Sc.) and reviewed by Kate O'Donnell (B.Sc., ACIEEM)

MKO has been appointed to provide the information necessary to allow the competent authority to conduct an Article 6(3) Screening for Appropriate Assessment for the Section 54 PDA 2000 (as amended) application of proposed amendments to the Record of Protected Structures (RPS) in relation to Cargin Demesne, Tulsk, Co. Roscommon.

### Site Location

The site comprises the townland of Cargin Demesne, Co. Roscommon, and consists of an approx. 160-hectare demesne. Cargin Demesne is located approximately 0.3km south of the village of Tulsk, Co. Roscommon and 13.5km east of Castlerea, Co. Roscommon (ITM Grid Reference: X 582973, Y 780075). The site is accessed via the National N61 road.

The site location is shown in Figure 1.

### Description of Project

The proposed amendments to the RPS involve the deletion of 'Cargin Demesne' (RPS Reference 02800082) under the heading of 'Protected Structure' from RCDP RPS 2022-2028 and the addition of four structures listed below which will henceforth comprise the extent of the protected structures at this location.



The proposed Section 55 additions to the Record of Protected Structures are to include Multiple-bay two-story stables to the former Cargin House, Wagon Shed/Cart Shed, Small Tower to the south of the Stables and the Formal Decorative Gateway at Cargin Demesne Townland, Tulsk, County Roscommon. The structures in question form part of Cargin House which is now extant.

It is proposed that the Multiple-bay two-story stables, Wagon Shed/Cart Shed and Small Tower buildings be included in the RPS on the basis of their architectural and social interest, and that the Formal Decorative Gateway be included in the RPS on the basis of its architectural significance. These structures are outlined in further detail below:

- The Multiple-bay two-story former stables are in a two-storey building of rubble stone faced with harling and with a slated roof, though the roof is partly missing. A breakfront advances from the centre of the front façade and has two carriage arches. The windows and doors in the rest of the building are irregularly arranged and are lacking the windows, doors and their frames.
- The Wagon Shed/Cart Shed lies to the east of the former site of the main house and to the north of the stables. This building is constructed with rubble stone faced with harling and has a slated, gabled roof. There are three carriage arches on the front elevation
- The Small Tower to the south of the stables is a small single-storey structure constructed with rubble stone and originally faced with harling. This structure had a staircase, though the upper part of the structure is now missing. The function of this structure is unknown.
- The Formal Decorative Gateway with the gates set back behind wing walls. The gate piers and wing walls are of limestone ashlar, the gates and the railings on the wing walls are of wrought iron, with cast-iron detailing. To the north and south of the gateway the demesne walls are low and are topped with mild steel rails. The original site of this gateway is said to be at the other entrance to the property that at present forms the principal access. The gateway was relocated to this position about seventy years ago.

### Data Collected to Carry out the Assessment

In preparation of this report, the following sources were used to gather information:

- Review of NPWS Site Synopses, Conservation Objectives for the European Sites
- Review of 2019 EU Habitats Directive (Article 17) Reports and mapping.
- Review of online web-mappers: National Parks and Wildlife Service (NPWS), EPA, Water Framework Directive (WFD), Geological Survey of Ireland (GSI).
- Review of OS maps and aerial photographs of the site.
- Review of relevant databases including National Biodiversity Ireland Database and available literature of previous surveys conducted in the area.
- Review of other relevant plans and projects within the area.

Offices in Galway and Dublin

+353 (0)91 735 611 | [mkoireland.ie](http://mkoireland.ie) | [info@mkoireland.ie](mailto:info@mkoireland.ie)

McCarthy Keville O'Sullivan Ltd t/a MKO. Registered in Ireland No: 462657. VAT No: IE9693052R



## Identification of Relevant European Sites

All European Sites that could potentially be affected by the proposed amendments to the RPS were identified using a source-pathway-receptor model and are listed and assessed below. Sites that were further away from the proposed amendments were also considered and in this case connectivity with sites that were further downstream in the catchment were identified. These included Lough Forbes Complex SAC [001818] and Ballykenny-Fisherstown Bog SPA [004101] each 47.6km downstream, and Lough Ree SAC [000440] and Lough Ree SPA [004064] each 67.7km downstream. However, given the nature and scale of the proposed amendments to the RPS, the lack of proposals to carry out any works to the structures, and the attenuating properties of the intervening waterbodies, no potential pathway for significant effects was identified.

European Sites and distance from proposed amendments to the RPS	Qualify Interests/Special Conservation Interests for which the European site has been designated (Sourced from NPWS online Conservation Objectives, <a href="http://www.npws.ie">www.npws.ie</a> on the 26/11/2024)	Conservation Objectives	Identification of Source-Pathway-Receptor chain and Likely Zone of Influence Determination
Mullygollan Turlough SAC [000612]  <b>Distance:</b> 2.1km	> [3180] Turloughs	Detailed site-specific conservation objectives for this European site (Version 1, January 2018) were reviewed as part of this assessment and are available at <a href="http://www.npws.ie">www.npws.ie</a>	<p>There is no potential for direct effects on this SAC as the project footprint is located entirely outside this designated site.</p> <p>Cargin Demesne and Mullygollan Turlough SAC are underlain by the Carrick on Shannon groundwater body. However, due to the nature and scale of the proposed amendments to the RPS, the lack of any proposals to carry out any works to the structures, and the intervening distance between Cargin Demesne and the SAC, there is no potential for indirect effects on this SAC.</p> <p>As a result, no complete source pathway receptor chain for likely significant effects was identified between Cargin Demesne and the SAC, therefore, in</p>

Offices in Galway and Dublin

+353 (091) 735 611 | [mkoireland.ie](http://mkoireland.ie) | [info@mkoireland.ie](mailto:info@mkoireland.ie)

McCarthy Keville O'Sullivan Ltd t/a MKO. Registered in Ireland No: 462657. VAT No: IE9693052R



			the absence of mitigation, the site is <b>not within the Likely Zone of Influence and no further assessment is required.</b>
<p>Annaghmore Lough (Roscommon) SAC [001626]</p> <p><b>Distance:</b> 6.2km</p>	<ul style="list-style-type: none"> <li>&gt; [1013] Geyer's Whorl Snail (<i>Vertigo geyeri</i>)</li> <li>&gt; [7230] Alkaline fens</li> </ul>	<p>Detailed site-specific conservation objectives for this European site (Version 1, January 2019) were reviewed as part of this assessment and are available at <a href="http://www.npws.ie">www.npws.ie</a></p>	<p>There is no potential for direct effects on this SAC as the project footprint is located entirely outside this designated site.</p> <p>Cargin Demesne and Annaghmore Lough (Roscommon) SAC are underlain by the Carrick on Shannon groundwater body. However, due to the nature and scale of the proposed amendments to the RPS, the lack of any proposals to carry out any works to the structures, and the intervening distance between Cargin Demesne and the SAC, there is no potential for indirect effects on this SAC.</p> <p>As a result, no complete source pathway receptor chain for likely significant effects was identified between Cargin Demesne and the SAC, therefore, in the absence of mitigation, the site is <b>not within the Likely Zone of Influence and no further assessment is required.</b></p>
<p>Bellanagare Bog SAC [000592]</p> <p><b>Distance:</b> 11.3km</p>	<ul style="list-style-type: none"> <li>&gt; [7110] Active raised bogs</li> <li>&gt; [7120] Degraded raised bogs still capable of natural regeneration</li> <li>&gt; [7150] Depressions on peat substrates of the <i>Rhynchosporion</i></li> </ul>	<p>Detailed site-specific conservation objectives for this European site (Version 1, November 2015) were reviewed as part of this assessment and are available at <a href="http://www.npws.ie">www.npws.ie</a></p>	<p>There is no potential for direct effects on this SAC as the project footprint is located entirely outside this designated site.</p> <p>Due to the terrestrial nature of the QI peatland habitats associated with this SAC and the intervening distance between Cargin Demesne and the SAC, there is no potential for indirect effects to this SAC.</p>

Offices in Galway and Dublin

+353 (091) 735 611 | [mkoireland.ie](http://mkoireland.ie) | [info@mkoireland.ie](mailto:info@mkoireland.ie)

McCarthy Keville O'Sullivan Ltd t/a MKO. Registered in Ireland No: 462657. VAT No: IE9693052R



<p>As a result, no complete source pathway receptor chain for likely significant effects was identified between Cargin Demesne and the SAC, therefore, in the absence of mitigation, the site is <b>not within the Likely Zone of Influence and no further assessment is required.</b></p>			
<p>Bellanagare Bog SPA [004105]</p> <p><b>Distance:</b> 11.3km</p>	<p>➤ [A395] Greenland White-fronted Goose (<i>Anser albifrons flavirostris</i>)</p>	<p>First-order site-specific conservation objectives for this European site (Version 1, October 2022) were reviewed as part of this assessment and are available at <a href="http://www.npws.ie">www.npws.ie</a></p>	<p>There is no potential for direct effects on this SPA as the project footprint is located entirely outside this designated site.</p> <p>Cargin Demesne is located outside the core foraging range of Greenland white-fronted goose (5-8km; SNH 2016<sup>1</sup>) and as such there is no potential for effects on this SCI species as a result of <i>ex-situ</i> disturbance or displacement.</p> <p>As a result, no complete source pathway receptor chain for likely significant effects was identified between Cargin Demesne and the SPA, therefore, in the absence of mitigation, the site is <b>not within the Likely Zone of Influence and no further assessment is required.</b></p>
<p>Cloonshanville Bog SAC [000614]</p> <p><b>Distance:</b> 12.5km</p>	<p>➤ [7110] Active raised bogs</p> <p>➤ [7120] Degraded raised bogs still capable of natural regeneration</p>	<p>Detailed site-specific conservation objectives for this European site (Version 1, January 2016) were</p>	<p>There is no potential for direct effects on this SAC as the project footprint is located entirely outside this designated site.</p>

<sup>1</sup> SNH (2016). Assessing connectivity with Special Protection Areas (SPAs). Scottish Natural Heritage, Inverness, Scotland. Available at: <https://www.nature.scot/sites/default/files/2022-12/Assessing%20connectivity%20with%20special%20protection%20areas.pdf> [Accessed 06/12/2024]

Offices in Galway and Dublin

+353 (091) 735 611 | [mkoireland.ie](http://mkoireland.ie) | [info@mkoireland.ie](mailto:info@mkoireland.ie)



	<ul style="list-style-type: none"> <li>&gt; [7150] Depressions on peat substrates of the <i>Rhynchosporion</i></li> <li>&gt; [91D0] Bog woodland</li> </ul>	reviewed as part of this assessment and are available at <a href="http://www.npws.ie">www.npws.ie</a>	<p>Due to the terrestrial nature of the QI peatland habitats associated with this SAC and the intervening distance between Cargin Demesne and the SAC, there is no potential for indirect effects to this SAC.</p> <p>As a result, no complete source pathway receptor chain for likely significant effects was identified between Cargin Demesne and the SAC, therefore, in the absence of mitigation, the site is <b>not within the Likely Zone of Influence and no further assessment is required.</b></p>
<p>Corbo Bog SAC [002349]</p> <p><b>Distance:</b> 13.1km</p>	<ul style="list-style-type: none"> <li>&gt; [7110] Active raised bogs</li> <li>&gt; [7120] Degraded raised bogs still capable of natural regeneration</li> <li>&gt; [7150] Depressions on peat substrates of the <i>Rhynchosporion</i></li> </ul>	Detailed site-specific conservation objectives for this European site (Version 1, November 2015) were reviewed as part of this assessment and are available at <a href="http://www.npws.ie">www.npws.ie</a>	<p>There is no potential for direct effects on this SAC as the project footprint is located entirely outside this designated site.</p> <p>Due to the terrestrial nature of the QI peatland habitats associated with this SAC and the intervening distance between Cargin Demesne and the SAC, there is no potential for indirect effects to this SAC.</p> <p>As a result, no complete source pathway receptor chain for likely significant effects was identified between Cargin Demesne and the SAC, therefore, in the absence of mitigation, the site is <b>not within the Likely Zone of Influence and no further assessment is required.</b></p>
<p>Corliskea/Trien/Cloonfello Bog SAC [002110]</p>	<ul style="list-style-type: none"> <li>&gt; [7110] Active raised bogs</li> <li>&gt; [7120] Degraded raised bogs still capable of natural regeneration</li> </ul>	Detailed site-specific conservation objectives for this European site (Version 1, February 2016) were	<p>There is no potential for direct effects on this SAC as the project footprint is located entirely outside this designated site.</p>

Offices in Galway and Dublin

+353 (091) 735 611 | [mkoireland.ie](http://mkoireland.ie) | [info@mkoireland.ie](mailto:info@mkoireland.ie)

McCarthy Keville O'Sullivan Ltd t/a MKO. Registered in Ireland No: 462657. VAT No: IE9693052R



**Distance:** 14.2km

- > [7150] Depressions on peat substrates of the *Rhynchosporion*
  - > [91D0] Bog woodland
- reviewed as part of this assessment and are available at [www.npws.ie](http://www.npws.ie)

Due to the terrestrial nature of the QI peatland habitats associated with this SAC and the intervening distance between Cargin Demesne and the SAC, there is no potential for indirect effects to this SAC.

As a result, no complete source pathway receptor chain for likely significant effects was identified between Cargin Demesne and the SAC, therefore, in the absence of mitigation, the site is **not within the Likely Zone of Influence and no further assessment is required.**

## Cumulative Impact Assessment

Assessment material for this in-combination impact assessment was compiled on the relevant developments within the vicinity of the Proposed Development and was verified on the 6<sup>th</sup> of December 2024. The material was gathered through a search of relevant online Planning Registers, consultation with Roscommon County Council, reviews of relevant documents, planning application details and planning drawings, and served to identify past and future projects, their activities, and their environmental effects. All relevant projects were considered in relation to the potential for in-combination effects. All relevant data was reviewed (e.g., individual EISs/EIARs, layouts, drawings etc.) for all relevant projects where available. Projects in the vicinity of Cargin Demesne within the last 5 years include one-off houses, extensions to houses, retention permission, change of use and small-scale developments and the following:

- > **N61 Tulsk to Clashaganny Road Realignment Project:** (Pl. Ref. 22580) PART 8 - The improvement, including widening and straightening, of approximately 3.95km of Standard Single Carriageway National Secondary route, consisting of 3.3km of offline construction and 0.65km of online widening, to typically provide a Type 1 single carriageway including 7.3m carriageway with 2 x 2.5m hard shoulders and 2 x 3m grass verges and including local road improvements/realignments, farm/accommodation roads, watercourse crossings, fencing, drainage, landscaping, utilities and service diversions, accommodation works and other ancillary works.
- > **N61 Tulsk to Gortnacranagh Road Project:** The section of the N61 under consideration as part of this project is approximately 5.6km in length, commencing on the northern environs of Tulsk village and extending northwards to the N61 crossing of the N5 Ballaghaderreen to Scramoge Road Project (N5B-S) at Gortnacranagh Townland. This project has not yet entered the planning system.

Offices in Galway and Dublin

+353 (091) 735 611 | [mkoireland.ie](http://mkoireland.ie) | [info@mkoireland.ie](mailto:info@mkoireland.ie)

McCarthy Keville O'Sullivan Ltd t/a MKO. Registered in Ireland No: 462657. VAT No: IE9693052R



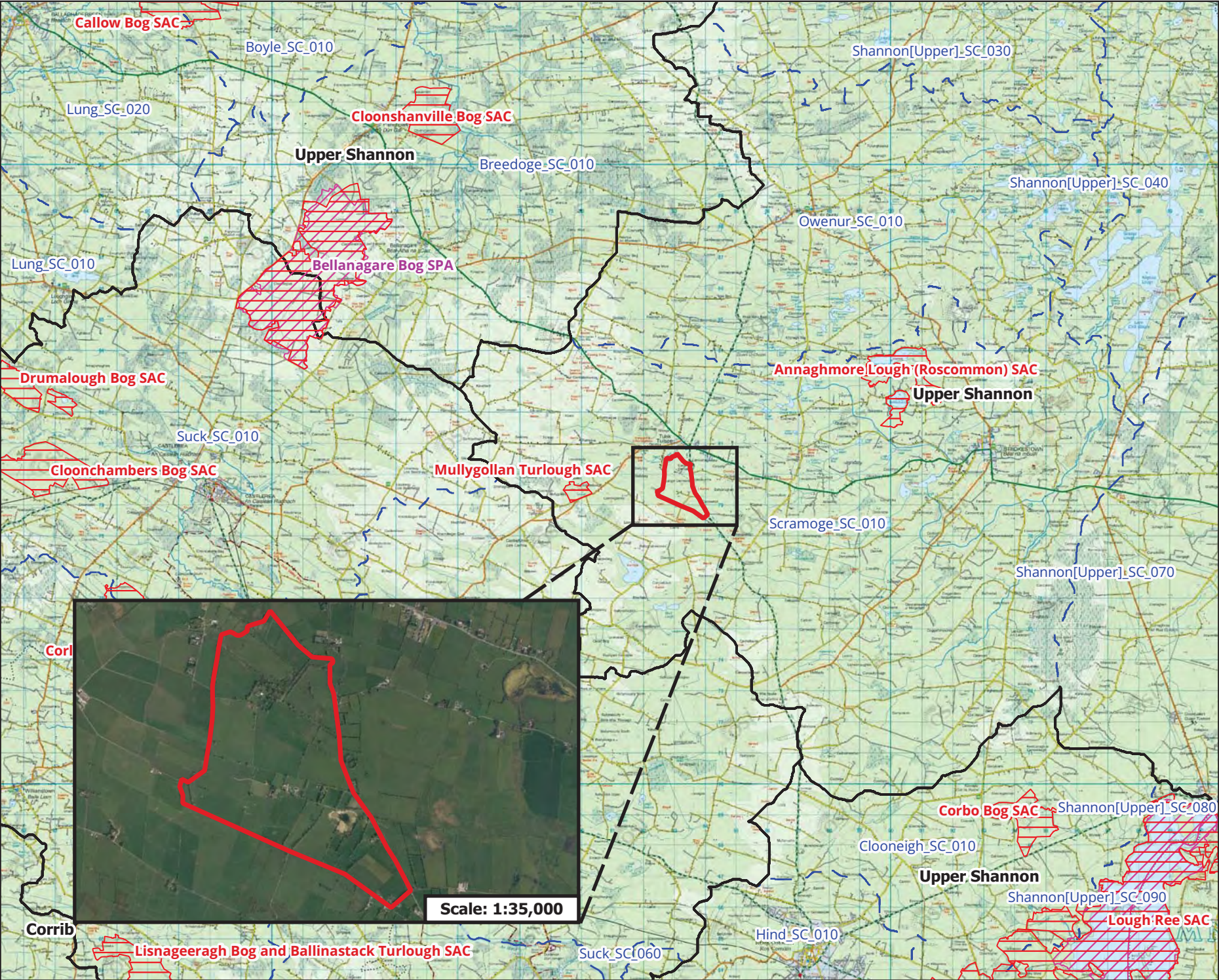
The following development plans were comprehensively reviewed, with particular reference to Policies and Objectives that relate to the Natura 2000 network and other natural heritage interests:

- > Ireland's 4th National Biodiversity Action Plan 2023-2030
- > Northern and Western Regional Assembly Regional Spatial and Economic Strategy 2020-2032
- > Roscommon County Development Plan 2022-2028

No pathway or mechanism for the proposed amendments to the RPS to result in any significant effect on any European Site was identified when considered on its own during the assessment process and therefore there is no potential for it to contribute to any such effects when considered in-combination with any other development. Additionally, any further applications made within the landowner property boundary will be subject to the appropriate assessment process.

#### Appropriate Assessment Screening Conclusion

After comprehensively assessing the location and connectivity of the site and the nature and scale of the proposed amendments to the RPS, no European Designated Sites are considered to be at risk of significant effects as a result of these amendments. It is concluded beyond reasonable scientific doubt, in view of best scientific knowledge, on the basis of objective information and in light of the conservation objectives of the relevant European sites, that the proposed amendments to the RPS, individually or in combination with other plans and projects, will not have a significant effect on any European Site.



Map Legend

- Site Boundary
- Special Area of Conservation (SAC)
- Special Protection Area (SPA)
- WFD Hydrological Catchments
- WFD Hydrological Subcatchments



Microsoft product screen shots reprinted with permission from Microsoft Corporation  
© Ordnance Survey Ireland. All rights reserved. Licence number CYAL50267517

Site Location

Project Title	
Proposed Amendments to the RPS for Roscommon regarding Cargin Demesne	
Drawn By	Checked By
KB	KOD
Project No.	Drawing No.
241139	Figure 1
Scale	Date
1:160,000	26.11.2024

**MKO**  
Planning and  
Environmental  
Consultants  
Tuam Road, Galway  
Ireland, H91 VW84  
+353 (0) 91 735611  
email: info@mkofireland.ie  
Website: ww.mkofireland.ie