



**APPROPRIATE ASSESSMENT  
SCREENING REPORT  
For  
Boyle RSIS**

**Development:** PART 8 of Planning & Development Regulations 2001 (as amended) Boyle RSIS

## Screening for Appropriate Assessment:

**Table 1: Project Details**

<b>Development Consent Type</b>	Part 8 Local Authority Own Development
<b>Development Location</b>	Boyle Town, Co Roscommon
<b>File Reference Number</b>	RSIS-RN-N61-029
<b>Description of the Project</b>	<p>The N61 is a National Secondary Road within County Roscommon, linking Roscommon town to the N4 outside of Boyle via Tulsk where it crosses the N5. The Route is approximately 75.2km in length of single land carriageway. The N61 through Boyle has an AADT c.6000 vehicles. Roscommon County Council in conjunction with TII has identified the urban area of Boyle town as a high-risk location for road collisions. Various sections of the N61 through Boyle town have a history of serious, minor injury and material damage collisions.</p> <p>Roscommon County Council Road Design Office are proposing to carry out a series of works to remedy the problems that have been highlighted. It is our objective to provide a much safer environment for pedestrians and vulnerable road users in Boyle by introducing engineering measures. This is to be achieved by Junction realignment and one-way system at existing L50571 and N61 junction. We are also proposing to install two new zebra crossings at locations where pedestrian desire lines are currently leading to a high level of uncontrolled street crossings.</p>

**Table 2: Identification of Natura 2000 Sites (SACs and SPAs) which may be impacted by the proposed development**

Please answer the following questions in order to determine whether there are any Natura 2000 sites which could potentially be impacted by the proposed development.

### Special Areas of Conservation (SAC)

#### **Impacts on habitats**

<b>1.</b>	<b>Impacts on Freshwater Habitats</b>	<b>Likely Effects (direct, indirect or cumulative)</b>
	<p>Is the development within a Special Area of Conservation whose qualifying interests include freshwater habitats, or in the catchment of same?</p> <p><b>Sites to consider</b>  <u>Lough Arrow SAC</u> (Site Code: 001673)  Distance from Site: 6.37 km  Designated features: Hard oligo-mesotrophic waters with benthic vegetation of Chara spp. (#3140)</p> <p><u>Bricklieve Mountains &amp; Keishcorran SAC</u>  (Site Code: 001656)</p>	<p>No</p> <p>No significant impacts on these Natura Sites are likely</p>

	<p>Distance from Site: 7.01 km Designated features: Turloughs (#3180)</p> <p><b><u>Unshin River SAC</u></b> (Site Code: 001898) Distance from Site: 13.61 km Designated features: Water courses of plain to montane levels with the Ranunculus fluitans and Callitriche-Batrachion vegetation (#3260)</p>	
<b>2.</b>	<b>Impacts on Bog Mires and Fens Habitats</b>	<b>Likely Effects (direct, indirect or cumulative)</b>
	<p>Is the development within a Special Area of Conservation whose qualifying interests include Bog Mires and Fens habitats, or within 1km of same?</p> <p><b>Sites to consider</b> <b><u>Cloonshanville Bog SAC</u></b> (Site Code: 000614) Distance from Site: 10.85 km Designated features: Active raised bogs (#7110), Degraded raised bogs still capable of natural regeneration (#7120), Depressions on peat substrates of the Rhynchosporion (#7150)</p> <p><b><u>Callow Bog SAC</u></b> (Site Code: 000595) Distance from Site: 12.95 km Designated features: Active raised bogs (#7110), Degraded raised bogs still capable of natural regeneration (#7120), Depressions on peat substrates of the Rhynchosporion (#7150)</p> <p><b><u>Bellanagare Bog SAC</u></b> (Site Code: 000592) Distance from Site: 14.92 km Designated features: Active raised bogs (#7110), Degraded raised bogs still capable of natural regeneration (#7120), Depressions on peat substrates of the Rhynchosporion (#7150)</p>	<p>No</p> <p>No significant impacts on these Natura Sites are likely</p>
<b>3.</b>	<b>Impacts on Forests Habitats</b>	<b>Likely Effects (direct, indirect or cumulative)</b>
	<p>Is the development within a Special Area of Conservation whose qualifying interests include Forests habitats, or within 1km of same?</p>	<p>No</p>

	<p><b>Sites to consider</b>  <b>Cloonshanville Bog SAC</b> (Site Code: 000614)  Distance from Site: 10.85 km  Designated features: Bog woodland (#91D0)</p> <p><b>Unshin River SAC</b> (Site Code: 001898)  Distance from Site: 13.61 km  Designated features: Alluvial forests with <i>Alnus glutinosa</i> and <i>Fraxinus excelsior</i> (Alno-Padion, Alnion incanae, Salicion albae) (#91E0)</p>	No significant impacts on these Natura Sites are likely
<b>4.</b>	<b>Impacts on Grasslands Habitats</b>	<b>Likely Effects (direct, indirect or cumulative)</b>
	<p>Is the development within a Special Area of Conservation whose qualifying interests include Grasslands habitats, or within 1km of same?</p> <p><b>Sites to consider</b>  <b>Bricklieve Mountains &amp; Keishcorran SAC</b> (Site Code: 001656)  Distance from Site: 7.01 km  Designated features: Semi-natural dry grasslands and scrubland facies on calcareous substrates (Festuco-Brometalia) (* important orchid sites) (#6210), Lowland hay meadows (<i>Alopecurus pratensis</i>, <i>Sanguisorba officinalis</i>) (#6510)</p>	<p>No</p> <p>No significant impacts on these Natura Sites are likely</p>
<b>5.</b>	<b>Impacts on Heath and Scrub Habitats</b>	<b>Likely Effects (direct, indirect or cumulative)</b>
	<p>Is the development within a Special Area of Conservation whose qualifying interests include Heath and Scrub habitats, or within 1km of same?</p> <p><b>Sites to consider</b>  None</p>	N/A
<b>6.</b>	<b>Impacts on Rocky Habitats</b>	<b>Likely Effects (direct, indirect or cumulative)</b>
	<p>Is the development within a Special Area of Conservation whose qualifying interests include Rocky habitats, or within 1km of same?</p> <p><b>Sites to consider</b></p>	No

	<b>Bricklieve Mountains &amp; Keishcorran SAC</b> (Site Code: 001656) Distance from Site: 7.01 km Designated features: Calcareous and calcshist screes of the montane to alpine levels (Thlaspietea rotundifolii) (#8120)	No significant impacts on these Natura Sites are likely
<b>7.</b>	<b>Impacts on Dunes Habitats</b>	<b>Likely Effects (direct, indirect or cumulative)</b>
	Is the development within a Special Area of Conservation whose qualifying interests include Dunes habitats, or within 1km of same?  <b>Sites to consider</b> None	N/A
<b>8.</b>	<b>Impacts on Coastal Habitats</b>	<b>Likely Effects (direct, indirect or cumulative)</b>
	Is the development within a Special Area of Conservation whose qualifying interests include Coastal habitats, or within 1km of same?  <b>Sites to consider</b> None	N/A

#### Impacts on Species

<b>1.</b>	<b>Impacts on Amphibians</b>	<b>Likely Effects (direct, indirect or cumulative)</b>
	Is the development within a Special Area of Conservation whose qualifying interests include Amphibians, or in the catchment of same?  <b>Sites to consider</b> None	N/A
<b>2.</b>	<b>Impacts on Anthropods</b>	<b>Likely Effects (direct, indirect or cumulative)</b>
	Is the development within a Special Area of Conservation whose qualifying interests include Anthropods or within 1km of same?  <b>Sites to consider</b> <b>Bricklieve Mountains &amp; Keishcorran SAC</b> (Site Code: 001656) Distance from Site: 7.01 km	No          No significant impacts on these Natura Sites are likely

	<p>Designated features: Euphydrias aurinia (Marsh Fritillary) (#1065), Austropotamobius pallipes (White-clawed Crayfish) (#1092)</p> <p><b>Callow Bog SAC</b> (Site Code: 000595) Distance from Site: 12.95 km Designated features: Euphydrias aurinia (Marsh Fritillary) (#1065)</p> <p><b>Bellanagare Bog SAC</b> (Site Code: 000592) Distance from Site: 14.92 km Designated features: Euphydrias aurinia (Marsh Fritillary) (#1065)</p>	
<b>3.</b>	<b>Impacts on Fish</b>	<b>Likely Effects (direct, indirect or cumulative)</b>
	<p>Is the development within a Special Area of Conservation whose qualifying interests include Fish, or within 1km of same?</p> <p><b>Sites to consider</b> <b>Unshin River SAC</b> (Site Code: 001898) Distance from Site: 13.61 km Designated features: Salmo salar (Salmon) (#1106)</p>	<p>No</p> <p>No significant impacts on these Natura Sites are likely</p>
<b>4.</b>	<b>Impacts on Mammals</b>	<b>Likely Effects (direct, indirect or cumulative)</b>
	<p>Is the development within a Special Area of Conservation whose qualifying interests include Mammals, or within 1km of same?</p> <p><b>Sites to consider</b> <b>Unshin River SAC</b> (Site Code: 001898) Distance from Site: 13.61 km Designated features: Lutra lutra (Otter) (#1355)</p>	<p>No</p> <p>No significant impacts on these Natura Sites are likely</p>
<b>5.</b>	<b>Impacts on Molluscs</b>	<b>Likely Effects (direct, indirect or cumulative)</b>
	<p>Is the development within a Special Area of Conservation whose qualifying interests include Molluscs, or within 1km of same?</p> <p><b>Sites to consider</b> None</p>	N/A
<b>6.</b>	<b>Impacts on Non-vascular Plants</b>	<b>Likely Effects (direct, indirect or cumulative)</b>
	Is the development within a Special Area of	N/A

	<p>Conservation whose qualifying interests include Non-vascular plants, or within 1km of same?</p> <p><b>Sites to consider</b> None</p>	
<b>7.</b>	<b>Impacts on Reptiles</b>	<b>Likely Effects (direct, indirect or cumulative)</b>
	<p>Is the development within a Special Area of Conservation whose qualifying interests include Reptiles, or within 1km of same?</p> <p><b>Sites to consider</b> None</p>	N/A
<b>8.</b>	<b>Impacts on Vascular Plants</b>	<b>Likely Effects (direct, indirect or cumulative)</b>
	<p>Is the development within a Special Area of Conservation whose qualifying interests include Vascular Plants, or within 1km of same?</p> <p><b>Sites to consider</b> None</p>	N/A

#### Special Protection Areas (SPA):

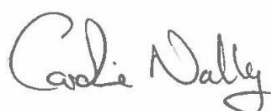
<b>1.</b>	<b>Impacts on Birds</b>	<b>Likely Effects (direct, indirect or cumulative)</b>
	<p>Is the development within a Special Protection Area, or within 1km of same?</p> <p><b>Sites to consider</b>  <u><b>Lough Gara SPA</b></u> (Site Code: 004048)  Distance from Site: 6.23 km  Designated features: Whooper Swan (<i>Cygnus cygnus</i>) (#A038), Greenland White-fronted Goose (<i>Anser albifrons flavirostris</i>) (#A395)   <u><b>Lough Arrow SPA</b></u> (Site Code: 004050)  Distance from Site: 6.38 km  Designated features: Little Grebe (<i>Tachybaptus ruficollis</i>) (#A004), Tufted Duck (<i>Aythya fuligula</i>) (#A061), Wetland and Waterbirds (#A999)</p>	<p>No</p> <p>No significant impacts on these Natura Sites are likely</p>

All designated sites within a 15km radius of the subject site have been considered in this screening for Appropriate Assessment.

**Conclusion Table 2: If the answer to all of these questions is no, significant impacts can be ruled out for Natura 2000 sites. No further assessment is required; proceed to the Habitats Directive Conclusion Statement.**

#### **Screening for Appropriate Assessment - Conclusion Statement**

<b>Development Type:</b> Part 8 Local Authority Own Development
<b>Development Location:</b> Boyle Town, Co Roscommon
<b>Natura 2000 sites within impact zone:</b> SAC:000592, SAC:000595, SAC:000614, SAC:001656, SAC:001673, SAC:001898, SPA:004048, SPA:004050
<b>Planning File Reference Number:</b> N/A
<b>Description of the Project:</b> <p>Proposed Road Safety Scheme on Elphin St and Main St, Boyle Co Roscommon. Works include a Junction alteration and improved pedestrian upgrades along route.</p> <p><b>Describe how the project or plan (alone or in combination) could affect Natura 2000 sites(s):</b>          There is no likelihood of significant effects and no adverse impacts to site integrity are predicted, due to the nature of the works proposed and the separation distances between the site and Natura 2000 Sites</p>
<b>If there are potential negative impacts, explain whether you consider if these are likely to be significant, and if not, why not:</b> <p>There is no likelihood of significant effects and no adverse impacts to site integrity are predicted, due to the nature of the works proposed.</p>
<b>Conclusion of Screening Assessment:</b> <p>Following an assessment of the proposed development and any potential relationships with European Sites, it is concluded that either alone or in combination with other plans or projects, there would be no likely significant effects on any European Sites.</p>
<b>Documentation reviewed for making this statement:</b> Roscommon County Development Plan 2022-2028 County Roscommon Heritage Plan 2012-2016
<b>Completed by:</b> Caroline Nally BA BAI CEng MIEI Executive Engineer
<b>Date:</b> 05/08/2023

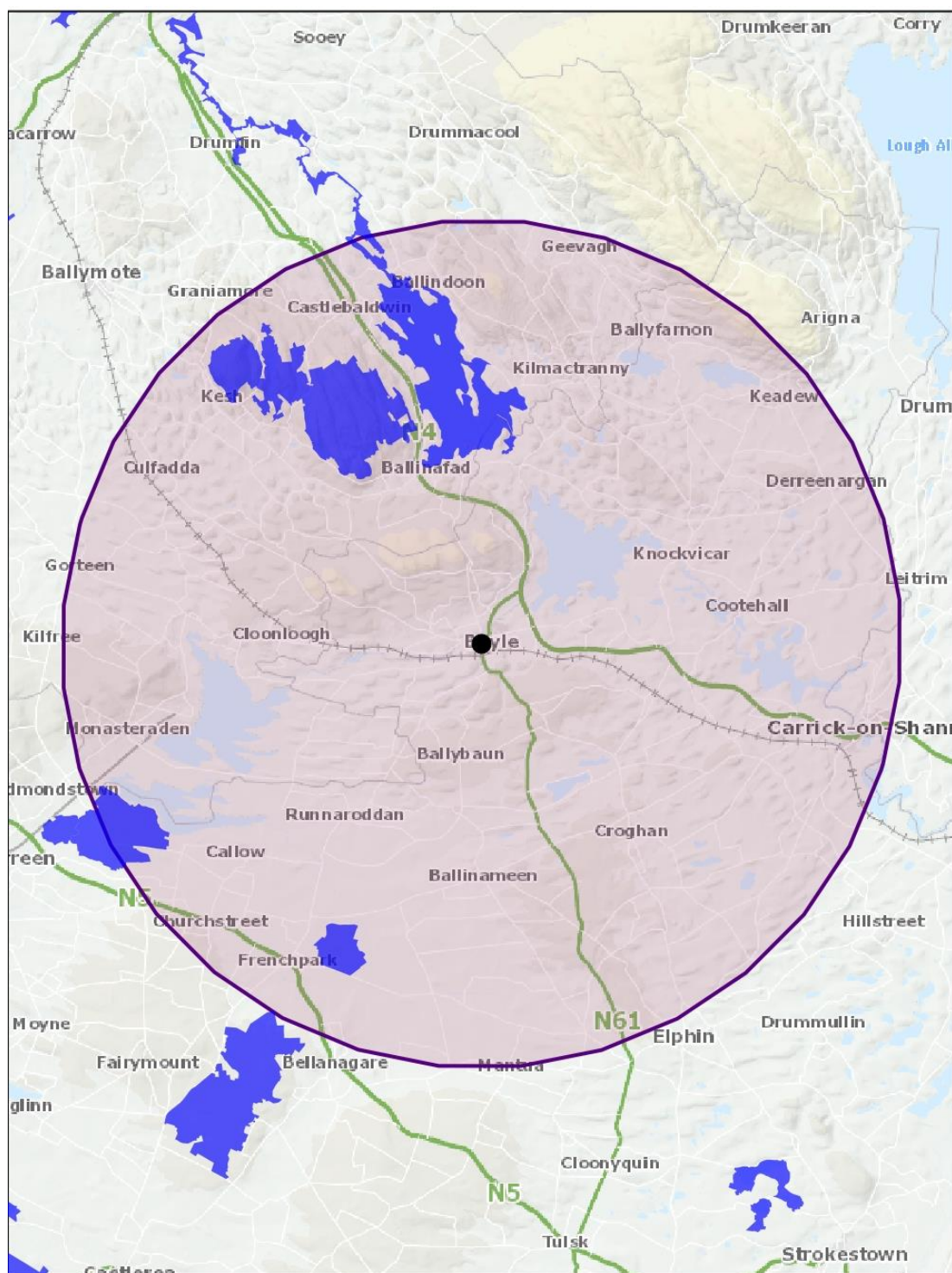


**Signed:**

**Date:**

**05/08/2023**

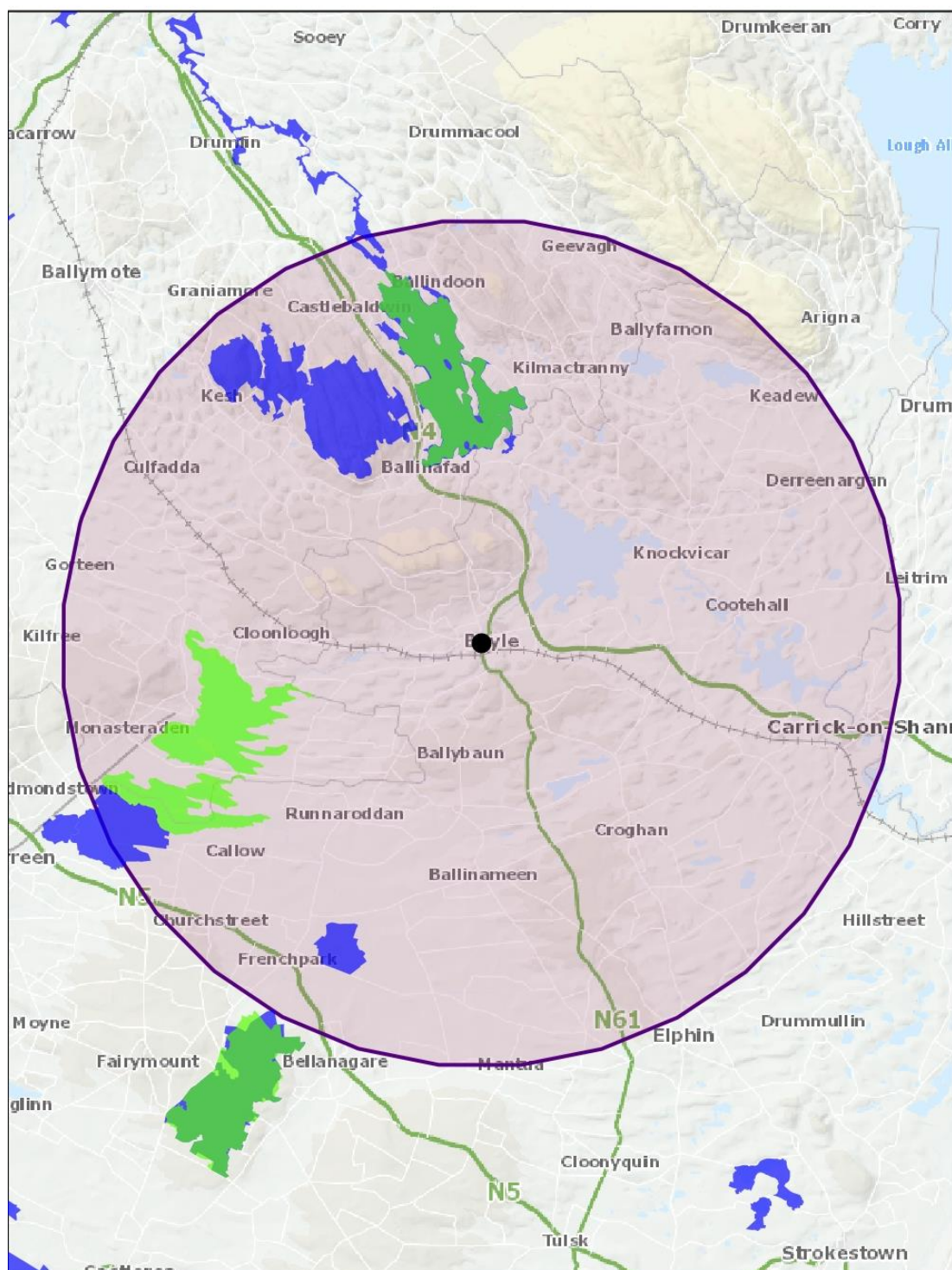




**SAC (blue) within 15km of Plan Ref. 20390**







**SAC & SPA within 15km of Plan Ref. 20390**