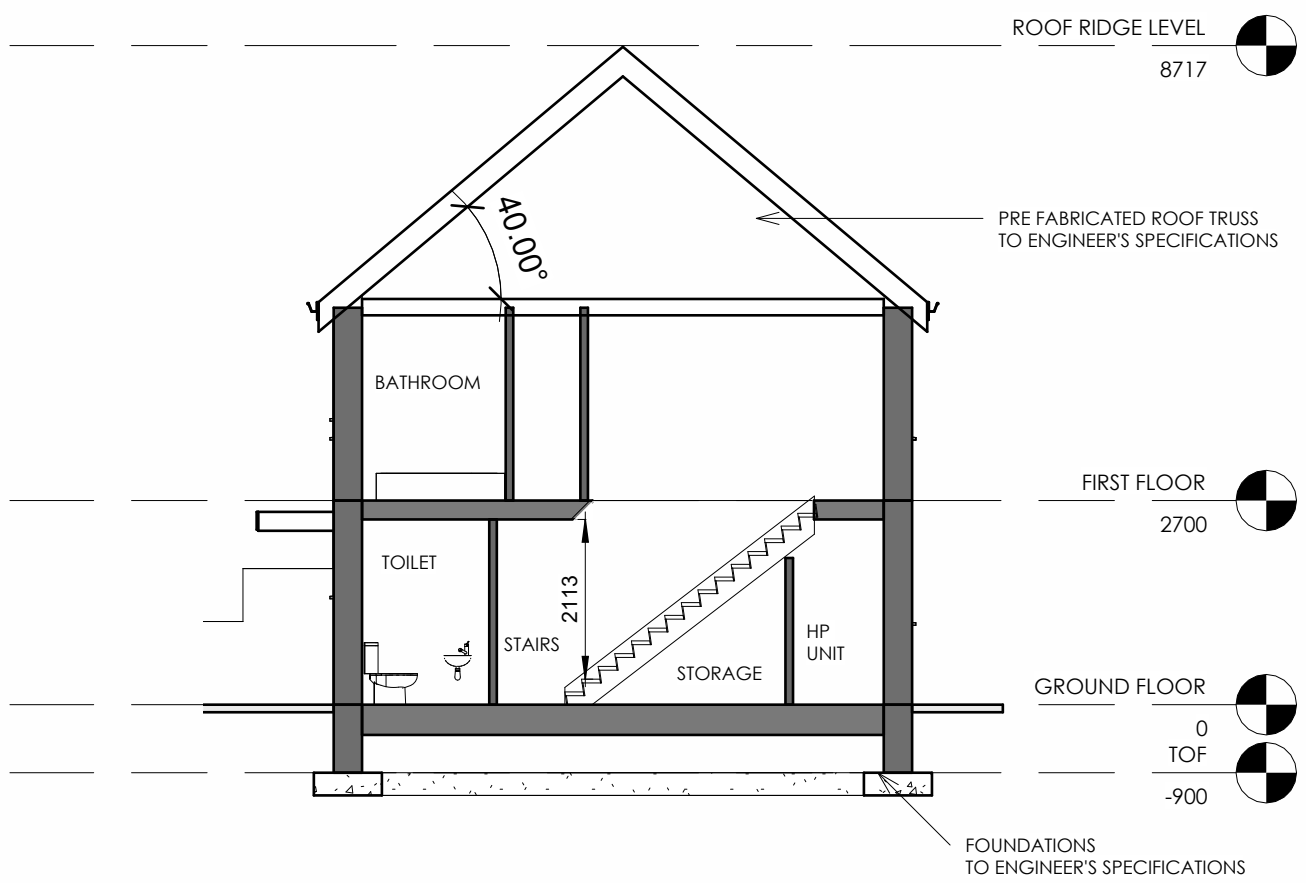
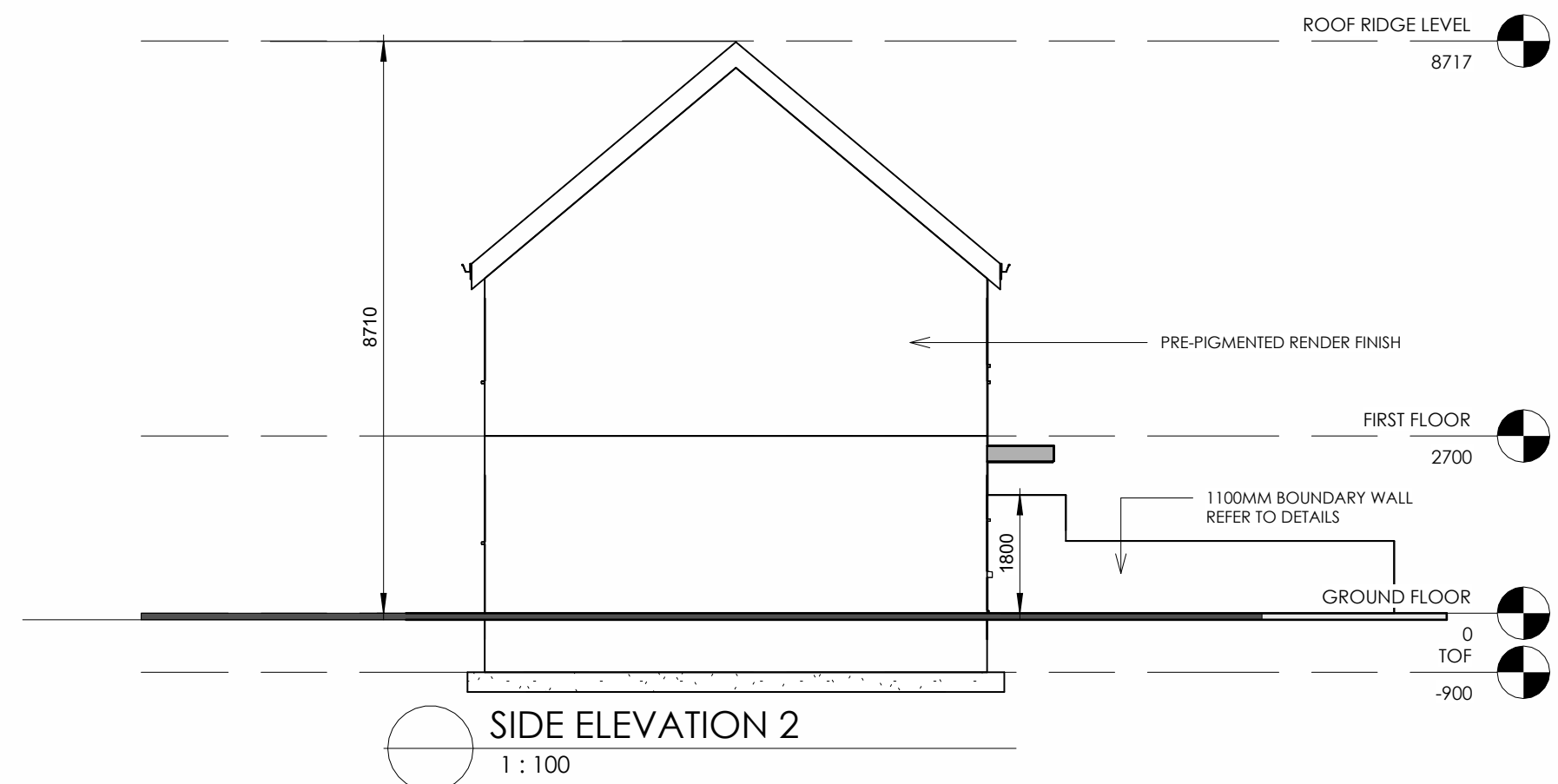
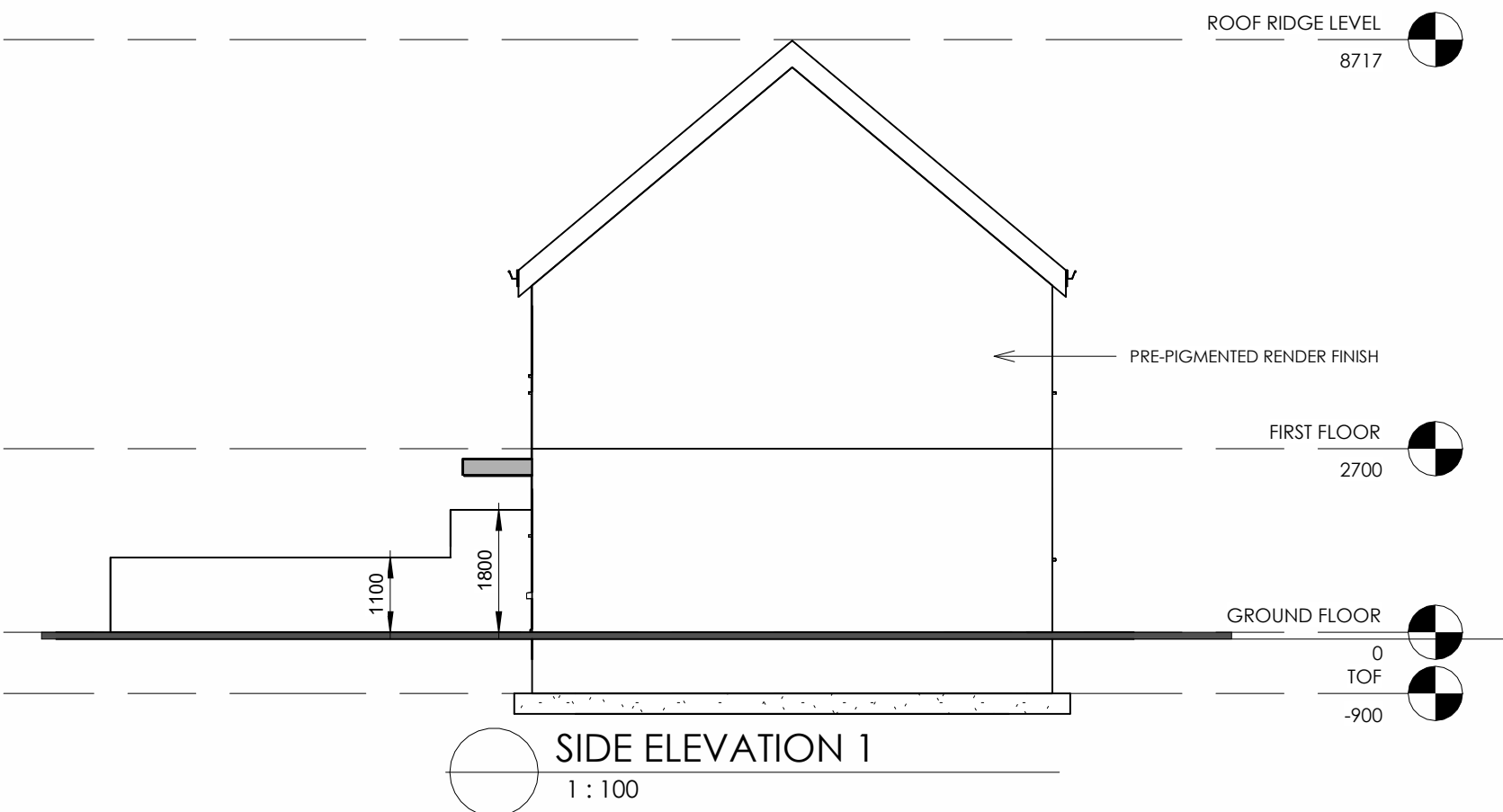
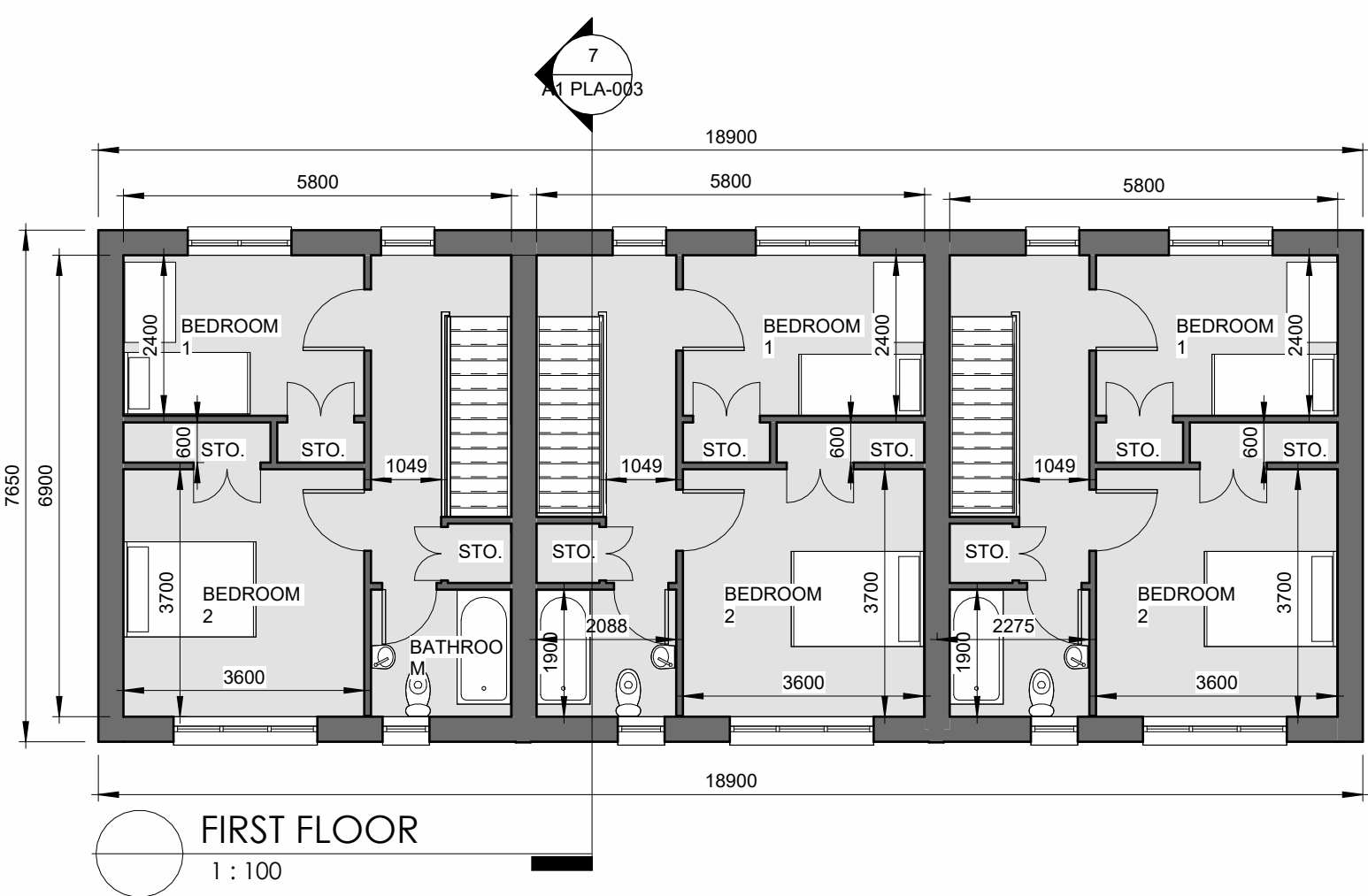
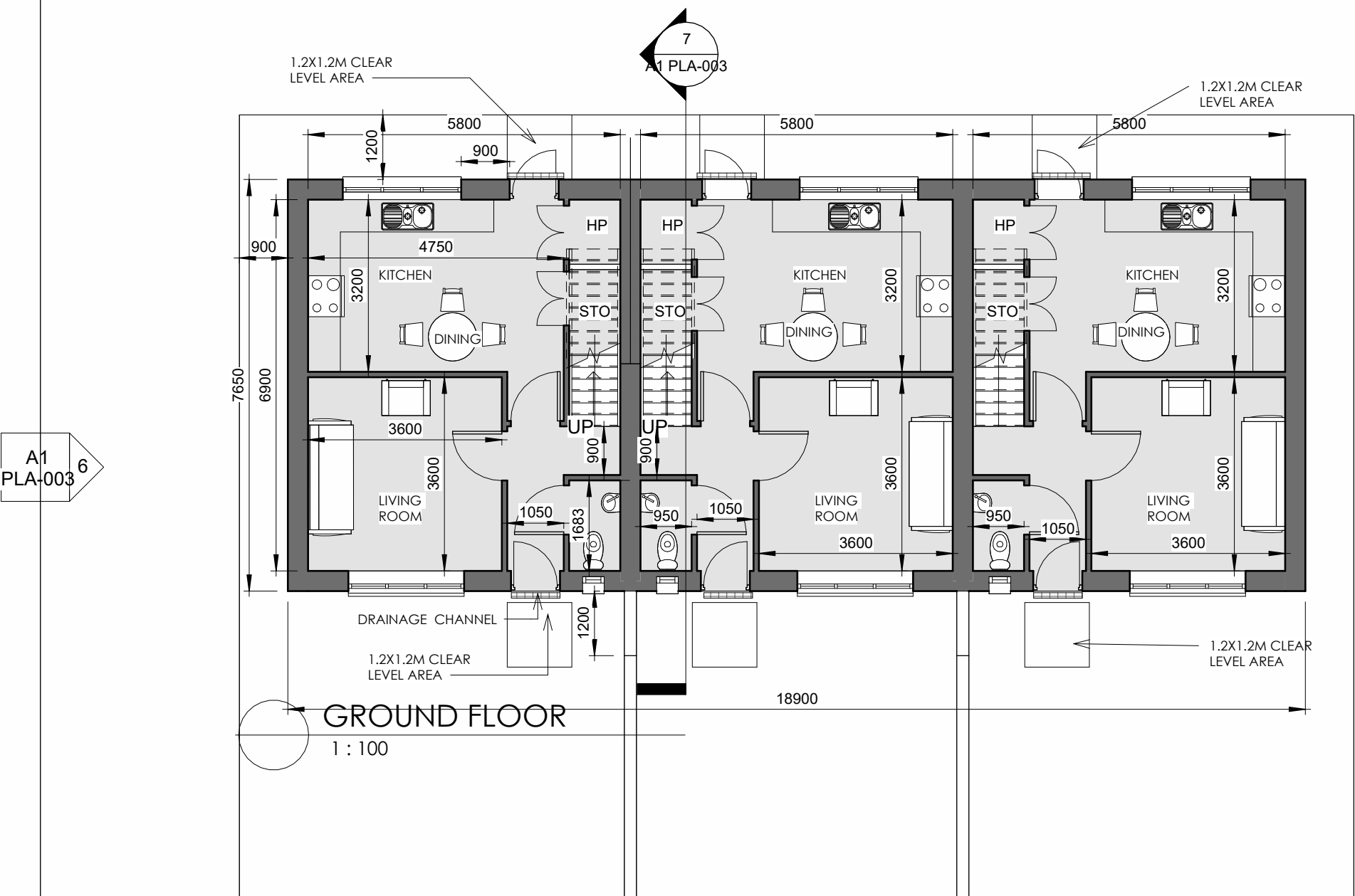


DESIGN MANUAL FOR QUALITY HOUSING 2022  
HOUSE TYPE C : TERRACED HOUSES - 2 BED 3P /2S

RELEVANT AREA	PROPOSED UNIT		EQUIVALENT DEPT. GUIDELINES	
	ACTUAL WIDTH	ACTUAL AREA	MIN. WIDTH	MIN. FLOOR AREA
BEDROOM 1	2.4m	8.6m <sup>2</sup>	2.1m	7.1m <sup>2</sup>
BEDROOM 2	3.6m	13m <sup>2</sup>	2.8m	13m <sup>2</sup>
LIVING ROOM	3.6m	13m <sup>2</sup>	3.6m	13m <sup>2</sup>

TOTAL STORAGE AREA		3m <sup>2</sup>		3m <sup>2</sup>
TOTAL LIVING/KITCHEN/ DINING AREA		28m <sup>2</sup>		28m <sup>2</sup>
GROSS INTERNAL AREA		73m <sup>2</sup>		70m <sup>2</sup>



notes

This drawing is copyright and may not be copied or altered without permission.  
Use only figured dimensions. Do not scale this drawing.  
The contractor is responsible for checking all dimensions on site prior to construction.  
The Architects are to be notified of any discrepancies prior to commencement of work.  
Levels and contours, shown on drawings are relative to local datum unless specified.

REVISION	DATE:	DESCRIPTION	INITIAL	REVISION	DATE:	DESCRIPTION	INITIAL

CLIENT	ROSCOMMON COUNTY COUNCIL
PROJECT	PROPOSED RESIDENTIAL DEVELOPMENT
ADDRESS	SLI AN CHOISTE, MONKSLAND, CO. ROSCOMMON
DRAWING	HOUSE TYPE C - PROPOSED FLOOR PLANS, ELEVATIONS
CAD REF	SA22571
SCALE	1:100
DRAWING NO.	SA22571 - PLA- 005
DRAWN BY	RN
DATE	17/05/24
REV	

