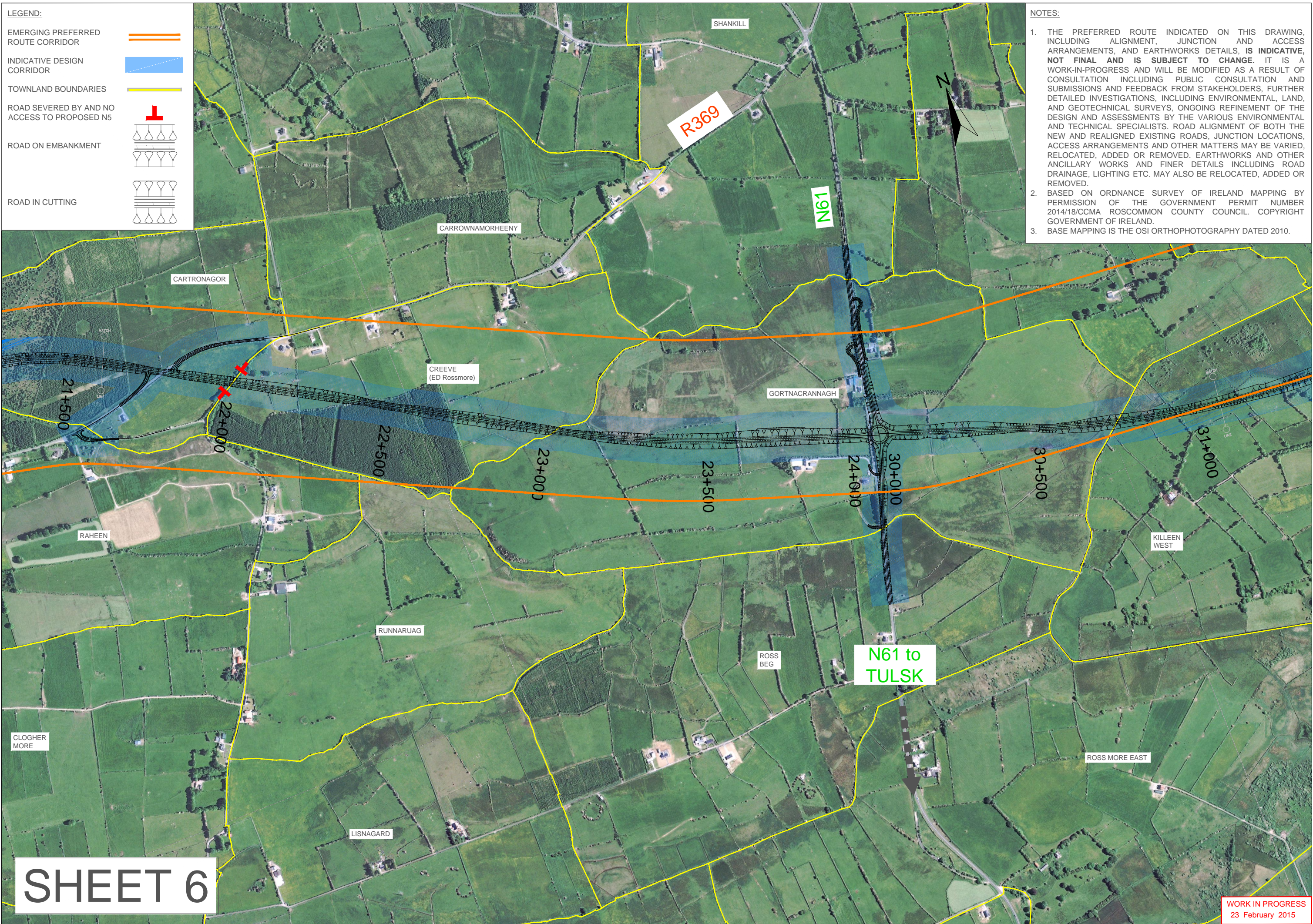


LEGEND:

- EMERGING PREFERRED ROUTE CORRIDOR
- INDICATIVE DESIGN CORRIDOR
- TOWNLAND BOUNDARIES
- ROAD SEVERED BY AND NO ACCESS TO PROPOSED N5
- ROAD ON EMBANKMENT
- ROAD IN CUTTING

NOTES:

1. THE PREFERRED ROUTE INDICATED ON THIS DRAWING, INCLUDING ALIGNMENT, JUNCTION AND ACCESS ARRANGEMENTS, AND EARTHWORKS DETAILS, IS INDICATIVE, NOT FINAL AND IS SUBJECT TO CHANGE. IT IS A WORK-IN-PROGRESS AND WILL BE MODIFIED AS A RESULT OF CONSULTATION INCLUDING PUBLIC CONSULTATION AND SUBMISSIONS AND FEEDBACK FROM STAKEHOLDERS, FURTHER DETAILED INVESTIGATIONS, INCLUDING ENVIRONMENTAL, LAND, AND GEOTECHNICAL SURVEYS, ONGOING REFINEMENT OF THE DESIGN AND ASSESSMENTS BY THE VARIOUS ENVIRONMENTAL AND TECHNICAL SPECIALISTS. ROAD ALIGNMENT OF BOTH THE NEW AND REALIGNED EXISTING ROADS, JUNCTION LOCATIONS, ACCESS ARRANGEMENTS AND OTHER MATTERS MAY BE VARIED, RELOCATED, ADDED OR REMOVED. EARTHWORKS AND OTHER ANCILLARY WORKS AND FINER DETAILS INCLUDING ROAD DRAINAGE, LIGHTING ETC. MAY ALSO BE RELOCATED, ADDED OR REMOVED.
2. BASED ON ORDNANCE SURVEY OF IRELAND MAPPING BY PERMISSION OF THE GOVERNMENT PERMIT NUMBER 2014/18/CCMA ROSCOMMON COUNTY COUNCIL. COPYRIGHT GOVERNMENT OF IRELAND.
3. BASE MAPPING IS THE OSI ORTHOPHOTOGRAPHY DATED 2010.



SHEET 6

WORK IN PROGRESS
23 February 2015