

Noreen McLoughlin, MSc

Environmental Consultant

Whitehill
Edgeworthstown
Co. Longford
☎ (087) 4127248 / (043) 6672775
✉ noreen.mcloughlin@gmail.com

PROVISION OF INFORMATION FOR APPROPRIATE ASSESSMENT SCREENING FOR A PROPOSED PART 8 DEVELOPMENT IN HARRISTOWN, CASTLEREA, CO ROSCOMMON

IN LINE WITH THE REQUIREMENTS OF ARTICLE 6(3) OF THE
EU HABITATS DIRECTIVE



Roscommon County Council

*c/o Sweeney Architects,
Block A,
Gem Park,
Athlone Road,
Longford*

October 2020

TABLE OF CONTENTS

1	INTRODUCTION	3
1.1	Background	3
1.2	Regulatory Context	3
	SECTION 2 METHODOLOGY	7
2.1	Appropriate Assessment	7
2.2	Statement of Competency	9
2.3	Desk Studies & Consultation	9
2.4	Assessment Methodology	9
1.3	Field Studies	10
2	SCREENING	11
2.1	Development Description	11
2.2	Site Location and Surrounding Environment	13
2.3	Natura 2000 Sites Identified	16
2.4	Impact Assessment	20
2.5	Finding of No Significant Effects	23
3	APPROPRIATE ASSESSMENT CONCLUSION	24
	APPENDIX I: FURTHER ECOLOGICAL RECOMMENDATIONS	25

1 INTRODUCTION

1.1 BACKGROUND

A comprehensive assessment of the potential effects of a proposed development at the Brí Chaoilínne Halting Site in Harristown, Castlerea, Co. Roscommon on designated Natura 2000 sites was carried out in October 2020 by Noreen McLoughlin, MSc, MCIEEM of Whitehill Environmental. This assessment allowed areas of potential ecological value and potential ecological constraints associated with this proposed development to be identified and it also enabled potential ecological effects associated with the proposed development on designated sites to be assessed.

The location of the proposed development is within the Zone of Influence of sites designated under European Law. As such and in accordance with Article 6(3) of the EU Habitat's Directive (Council Directive 92/43/EEC) regarding Appropriate Assessment, this screening exercise for Appropriate Assessment was carried out in order to identify whether any significant impacts on designated sites are likely.

This report contains information required by the competent authority (in this instance the Roscommon County Council) to undertake a screening for Appropriate Assessment. It is the responsibility of the competent authority to make a decision as to whether or not the proposed development is likely to have significant effects on European Sites, either individually or in combination with other plans or projects. In accordance with the Legislation and National Guidance, the competent authority should issue an AA Screening Determination, which should set out their decision regarding AA, including the main reasons and considerations on which the determination is based.

1.2 REGULATORY CONTEXT

The Birds Directive (Council Directive 2009/147/EC) recognises that certain species of birds should be subject to special conservation measures concerning their habitats. The Directive requires that Member States take measures to classify the most suitable areas as Special Protection Areas (SPAs) for the conservation of bird species listed in Annex 1 of the Directive. SPAs are selected for bird species (listed in Annex I of the Birds Directive), that are regularly occurring populations of migratory bird species and the SPA areas are of international importance for these migratory birds.

The EU Habitats Directive (92/43/EEC) requires that Member States designate and ensure that particular protection is given to sites (Special Areas of Conservation) which are made up of or support particular habitats and species listed in annexes to this Directive.

Articles 6(3) and 6(4) of this Directive also call for the undertaking of an Appropriate Assessment for plans and projects not directly connected with or necessary to the management of, but which are likely to have a significant effect on any European designated sites (i.e. SACs and SPAs). This is explained in greater detail in the following section (Section 1.2.2 and Section 1.2.3).

The Water Framework Directive (WFD) (2000/60/EC), which came into force in December 2000, establishes a framework for community action in the field of water policy. The WFD was transposed into Irish law by the European Communities (Water Policy) Regulations 2003 (S.I. 722 of 2003). The WFD rationalises and updates existing legislation and provides for water management on the basis of River Basin Districts (RBDs). RBDs are essentially administrative areas for coordinated water management and are comprised of multiple river basins (or catchments), with cross-border basins (i.e. those covering the territory of more than one Member State) assigned to an international RBD. The aim of the WFD is to ensure that waters achieve at least good status by 2021 and that status does not deteriorate in any waters.

Appropriate Assessment and the Habitats Directive

Directive 92/43/EEC on the Conservation of Natural Habitats and Wild Fauna and Flora – the ‘Habitats Directive’ - provides legal protection for habitats and species of European importance. Article 2 of the Directive requires the maintenance or restoration of habitats and species of European Community interest, at a favourable conservation status. Articles 3 - 9 provide the legislative means to protect habitats and species of Community interest through the establishment and conservation of an EU-wide network of sites known as *Natura 2000*. *Natura 2000* sites are Special Areas of Conservation (SACs) designated under the Habitats Directive and Special Protection Areas (SPAs) designated under the Conservation of Wild Birds Directive (79/409/EEC).

Articles 6(3) and 6(4) of the Habitats Directive sets out the decision-making tests for plans or projects affecting *Natura 2000* sites. Article 6(3) establishes the requirement for Appropriate Assessment:

“Any plan or project not directly connected with or necessary to the management of the site but likely to have a significant effect thereon, either individually or in combination with

other plans or projects, shall be subject to appropriate assessment of its implications for the site in view of the site's conservation objectives. In the light of the conclusions of the assessment of the implications for the site and subject to the provisions of paragraph 4, the competent national authorities shall agree to the plan or project only after having ascertained that it will not adversely affect the integrity of the site concerned and, if appropriate, after having obtained the opinion of the general public."

Article 6(4) deals with the steps that should be taken when it is determined, as a result of appropriate assessment, that a plan/project will adversely affect a European site. Issues dealing with alternative solutions, imperative reasons of overriding public interest and compensatory measures need to be addressed in this case.

Article 6(4) states:

"If, in spite of a negative assessment of the implications for the site and in the absence of alternative solutions, a plan or project must nevertheless be carried out for imperative reasons of overriding public interest, including those of a social or economic nature, the Member States shall take all compensatory measures necessary to ensure that the overall coherence of Natura 2000 is protected. It shall inform the Commission of the compensatory measures adopted.

Where the site concerned hosts a priority natural habitat type and/or a priority species, the only considerations which may be raised are those relating to human health or public safety, to beneficial consequences of primary importance for the environment or, further to an opinion from the Commission, to other imperative reasons of overriding public interest."

The Appropriate Assessment Process

The aim of Appropriate Assessment is to assess the implications of a proposal in respect of a designated site's conservation objectives.

The 'Appropriate Assessment' itself is an assessment which must be carried out by the competent authority which confirms whether the plan or project in combination with other plans and projects will have an adverse impact on the integrity of a European site.

Screening for Appropriate Assessment shall be carried out by the competent authority as set out in Section 177U(1) and (2) of the Planning and Development Act 2000 (as amended) as follows:

'(1) A screening for appropriate assessment of a draft Land use plan or application for consent for proposed development shall be carried out by the competent authority to assess, in view of best scientific knowledge, if that Land use plan or proposed development, individually or in combination with another plan or project is likely to have a significant effect on the European site.

(2) A competent authority shall carry out a screening for appropriate assessment under subsection (1) before—

(a) a Land use plan is made including, where appropriate, before a decision on appeal in relation to a draft strategic development zone is made, or

(b) consent for a proposed development is given.'

The competent authority shall determine that an Appropriate Assessment is not required if it can be excluded, that the proposed development, individually or in combination with other plans or project will have a significant effect on a European site.

Where the competent authority cannot exclude the potential for a significant effect on a European site, an Appropriate Assessment shall be deemed required.

Where an Appropriate Assessment is required, the conclusions of the Appropriate Assessment Report (Natura Impact Statement (NIS)) should enable the competent authority to ascertain whether the plan or proposed development would adversely affect the integrity of the European site. If adverse impacts on the integrity of a European site cannot be avoided, then mitigation measures should be applied during the appropriate assessment process to the point where no adverse impacts on the site remain. Under the terms of the Habitats Directive consent can only be granted for a project if, as a result of the appropriate assessment either (a) it is concluded that the integrity of any European sites will not be adversely affected, or (b) after mitigation, where adverse impacts cannot be excluded, there is shown to be an absence of alternative solutions, and there exists imperative reasons of overriding public interest for the project should go ahead.

Section 177(V) of the Planning and Development Act 2000 (as amended) outlines that the competent authority shall carry out the Appropriate Assessment, taking into account the Natura Impact Statement (amongst any other additional or supplemental information). A determination shall then be made by the competent authority in line with the requirements of Article 6(3) of the Habitats Directive as to whether the plan or proposed development would adversely affect the integrity of a European site, prior to consent being given.

SECTION 2 METHODOLOGY

2.1 APPROPRIATE ASSESSMENT

This Statement of Screening for Appropriate Assessment (Stage 1) has been prepared with reference to the following:

- European Commission (2000). Managing Natura 2000 Sites: The Provisions of Article 6 of the 'Habitats' Directive 92/43/EEC.
- European Commission (2002). Assessment of Plans and Projects Significantly Affecting Natura 2000 sites: Methodological Guidance on the Provisions of Article 6(3) and (4) of the Habitats Directive 92/43/EEC.
- European Commission (2006). Nature and Biodiversity Cases: Ruling of the European Court of Justice.
- European Commission (2007). Clarification of the Concepts of: Alternative Solution, Imperative Reasons of Overriding Public Interest, Compensatory Measures, Overall Coherence, Opinion of the Commission.
- Department of Environment, Heritage and Local Government (2009). Appropriate Assessment of Plans and Projects in Ireland: Guidance for Planning Authorities.

The EC Guidance sets out a number of principles as to how to approach decision making during the process. The primary one is 'the precautionary principle' which requires that the conservation objectives of Natura 2000 should prevail where there is uncertainty.

When considering the precautionary principle, the emphasis for assessment should be on objectively demonstrating with supporting evidence that:

- There will be no significant effects on a Natura 2000 site;
- There will be no adverse effects on the integrity of a Natura 2000 site;
- There is an absence of alternatives to the project or plan that is likely to have an adverse effect to the integrity of a Natura 2000 site; and
- There are compensation measures that maintain or enhance the overall coherence of Natura 2000.

This translates into a four stage process to assess the impacts, on a designated site or species, of a policy or proposal.

The EC Guidance states that “each stage determines whether a further stage in the process is required”. Consequently, the Council may not need to proceed through all four stages in undertaking the Appropriate Assessment.

The four-stage process is:

Stage 1: Screening – The process which identifies the likely impacts upon a Natura 2000 site of a project or plan, either alone or in combination with other projects or plans, and considers whether or not these impacts are likely to be significant;

Stage 2: Appropriate Assessment – The consideration of the impact on the integrity of the Natura 2000 site of the project or plan, either alone or in combination with other projects or plans, with respect to the site’s structure and function and its conservation objectives. Additionally, where there are adverse impacts, an assessment of the potential mitigation of those impacts;

Stage 3: Assessment of Alternative Solutions – The process which examines alternative ways of achieving objectives of the project or plan that avoid adverse impacts on the integrity of the Natura 2000 site;

Stage 4: Assessment where no alternative solutions exist and where adverse impacts remain – An assessment of the compensatory measures where, in the light of an assessment of imperative reasons of overriding public interest (IROPI), it is deemed that the project or plan should proceed.

In complying with the obligations set out in Articles 6(3) and following the guidelines described above, this screening statement has been structured as a stage by stage approach as follows:

- Description of the proposed project;
- Identification of the Natura 2000 sites close to the proposed development;
- Identification and description of any individual and cumulative impacts on the Natura 2000 sites likely to result from the project;
- Assessment of the significance of the impacts identified above on site integrity. Exclusion of sites where it can be objectively concluded that there will be no significant effects;
- Description of proven mitigation measures.

2.2 STATEMENT OF COMPETENCY

This AA Screening report was carried out by Noreen McLoughlin, BA, MSc, MCIEEM. Noreen has an honours degree in Zoology and an MSc in Freshwater Ecology from Trinity College, Dublin and she has been a full member of the Chartered Institute of Ecology and Environmental Management for over thirteen years. Noreen has over 15 years' experience as a professional ecologist in Ireland.

2.3 DESK STUDIES & CONSULTATION

Information on the site and the area of the proposed development was studied prior to the completion of this statement. The following data sources were accessed in order to complete a thorough examination of potential impacts:

- National Parks and Wildlife Service - Aerial photographs and maps of designated sites, information on habitats and species within these sites and information on protected plant or animal species, conservation objectives, site synopses and standard data forms for relevant designated sites.
- Environmental Protection Agency (EPA)- Information pertaining to water quality, geology and licensed facilities within the area;
- Myplan.ie – Mapped based information;
- National Biodiversity Data Centre (NBDC) – Information pertaining to protected plant and animal species within the study area;
- Bing maps & Google Street View – High quality aerials and street images;
- Sweeney Architects – Plans and Information Pertaining to the Development;
- Roscommon County Council – Information on planning history in the area for the assessment of cumulative impacts.

2.4 ASSESSMENT METHODOLOGY

The proposed development was assessed to identify its potential ecological impacts and from this, the Zone of Influence (Zoi) of the proposed development was defined. Based on the potential impacts and their Zoi, the Natura 2000 sites potentially at risk from direct, indirect or in-combination impacts were identified. The assessment considered all potential impact sources and pathways connecting the proposed development to Natura 2000 sites, in view of the conservation objectives supporting the favourable conservation condition of the site's Qualifying Interests (QIs) or Special Conservation Interests (SCIs).

The conservation objectives relating to each Natura 2000 site and its QIs/SCIs are cited generally for SACs as "to maintain or restore the favourable conservation condition of the Annex I habitat(s) and/or Annex II species for which the SAC has been selected", and for

SPAs “to maintain or restore the favourable conservation condition of the bird species listed as Special Conservation Interests for this SPA”.

As defined in the Habitat’s Directive, the favourable conservation status of a habitat is achieved when:

- Its natural range and area it covers within that range is stable or increasing;
- The specific structure and functions which are necessary for its long-term maintenance exist and are likely to continue to exist for the foreseeable future;

The favourable conservation status of a species is achieved when:

- The population dynamics data on the species concerned indicate that it is maintaining itself on a long-term basis as a viable component of its natural habitats;
- The natural range of the species is neither being reduced nor is likely to be reduced for the foreseeable future;
- There is, and will probably continue to be, a sufficiently large habitat to maintain its populations on a long-term basis.

Where site-specific conservation objectives (SSCOs) have been prepared for a European site, these include a series of specific attributes and targets against which effects on conservation condition, or integrity, can be measured. Where potential significant effects are identified, then these SSCO’s should be considered in detail.

1.3 FIELD STUDIES

A visit to the site of the proposed application at Castlerea was conducted on October 1st 2020, when field notes, species lists and photographs were taken. Habitats within the application site were classified in accordance to Level 3 of *A Guide to Habitats in Ireland* (Fossit, 2000). Particular attention was paid to invasive plant species within the application site.

2 SCREENING

2.1 DEVELOPMENT DESCRIPTION

Roscommon County Council are seeking permission for a proposed development at the Bri Chaoinne Halting Site at Harristown, Castlerea, Co. Roscommon. Permission for the works will be sought under Part 8 of the Planning and Development Regulations 2001. The proposed development will consist of:

- *Alterations to two existing semi-detached housing units to convert these into two separate five-bed detached houses. Works will involve the demolition of internal dividing walls and the dividing outside garden walls to create a single housing unit on each site. Plans also include for all ancillary and associated site works.*

All works will take place within the existing footprints of the semi-detached houses.

Extract from the planning drawings submitted for both sites are shown in Figures 1a and 1b.

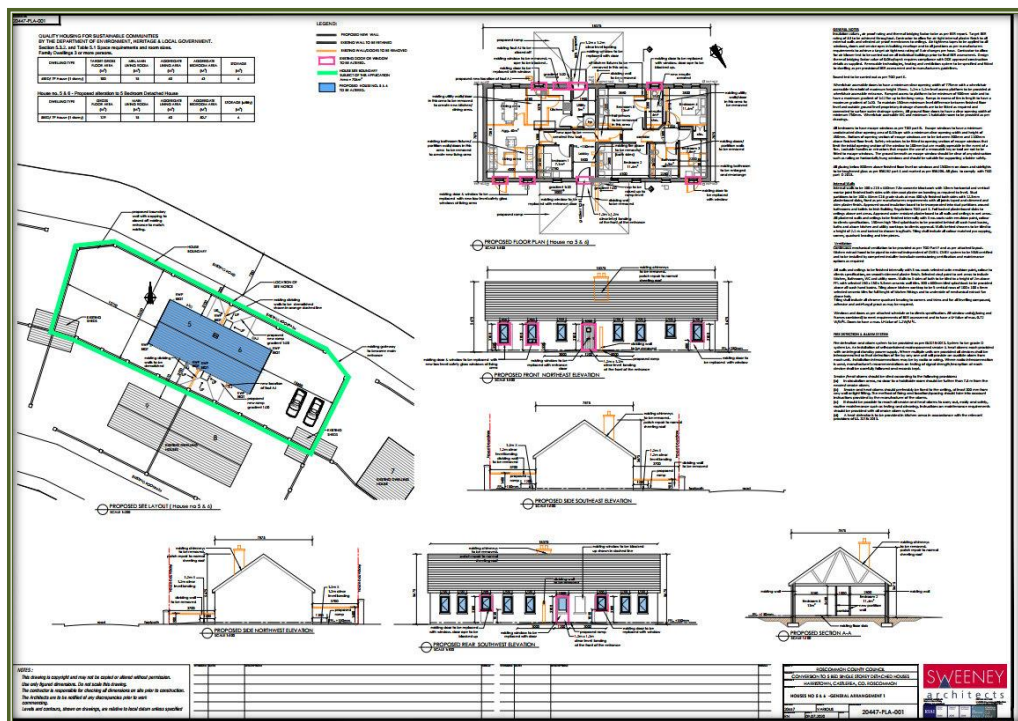


Figure 1a – Extract from Planning Drawings for House 5 and 6 (as Prepared by Sweeney Architects)

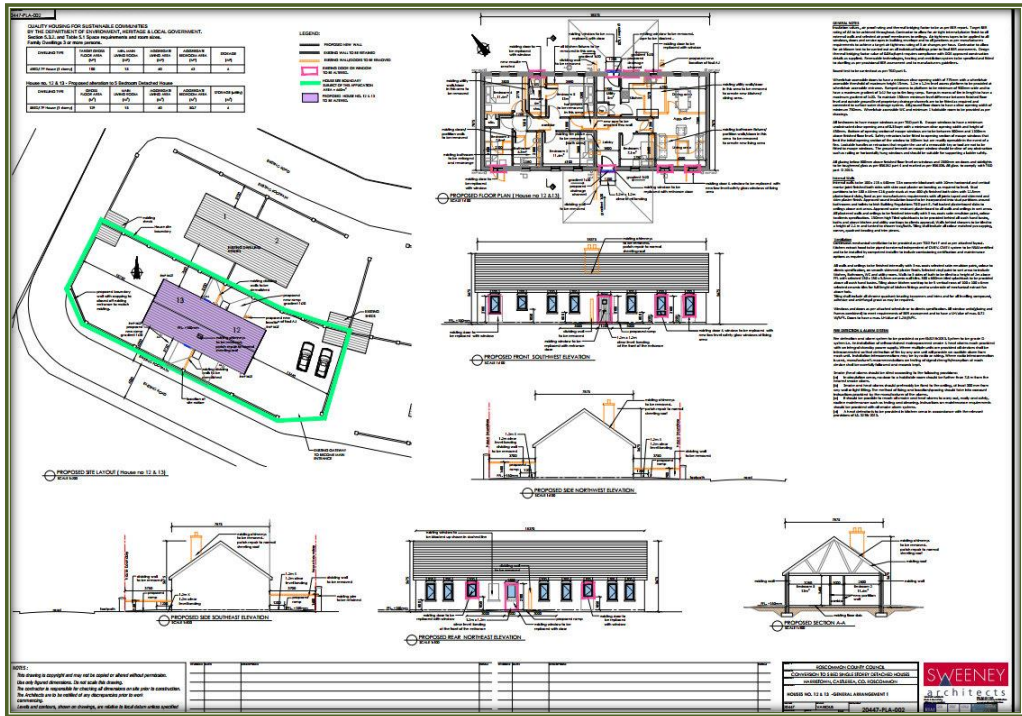


Figure 1b – Extract from Planning Drawings for House 12 and 13 (as Prepared by Sweeney Architects)

Wastewater and Surface Water Treatment

The proposed development consists of the alteration to existing houses, without extension to floor area. These houses form part of an overall existing housing development where both storm water and foul water is existing on-site. The foul water disposal is by an on-site treatment system and this has capacity for the additional loadings resulting from the works.

2.2 SITE LOCATION AND SURROUNDING ENVIRONMENT

The application sites are approximately 0.1 hectares each. They are located in a rural area, within the Brí Chaoinne Halting Site, which is on the outskirts of Castlereah town, approximately 2km south of the town centre. The sites are accessed via an existing entrance into the halting site that is located just off the National Road, the N60.

The land-use in the area is predominantly agricultural and improved agricultural grassland is the dominant habitat in the lands surrounding the sites. Forestry (mixed / coniferous) is also common in the area. Other habitats represented locally include neutral-wet grasslands, peatlands, hedgerows, treelines and watercourses.

Site location maps are shown in Figures 2 and 3, whilst an aerial photograph of the site and its surrounding habitats is shown in Figure 4.

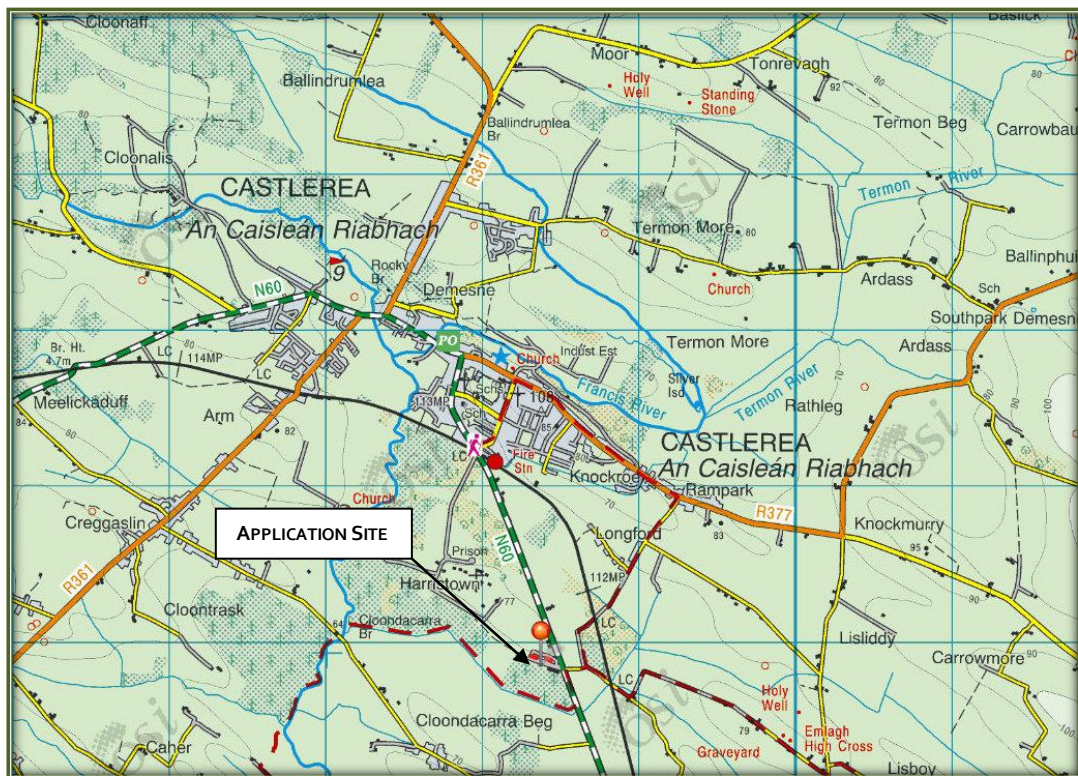


Figure 2 – Site Location Map (Pinned)



Figure 3 – Site Location Map (Sites Outlined in Red)

HABITATS AND SPECIES

The dominant habitat within both sites is Buildings and Artificial Surfaces. There is no vegetation present in either site and no habitats of biodiversity value occur.

An examination of the website of the National Biodiversity Data Centre, revealed that there are no records for the presence of any notable plant or mammal species from within the relevant 1km square (M6877) of this proposed development. In addition, no listed invasive species were noted on site during the survey.

WATER FEATURES AND QUALITY

The application site is located within the Upper Shannon Hydrometric Area (26) and Catchment (26D), the Suck Sub-Catchment (010) and Suck Sub-Basin (030). There are no drains or streams within or adjacent to the application sites. The closest watercourse is a drain that is 22m south of House site 12 & 13. Water in this drain flows south towards the Harristown Stream, which is 258m south of the site. Water in the Harristown Stream then flows west, towards the River Suck, which is 1.2km west of the application sites. The River Suck is a tributary of the River Shannon.

The EPA have classed the ecological status of the Harristown Stream at points close to the application site as poor. The River Suck at its confluence with the Harristown Stream and upstream of that confluence is also classed as poor. However, further downstream

ecological status in the River Suck is classed as high. Under the requirements of the Water Framework Directive, all waterbodies must achieve good ecological status.



Figure 4 – Aerial Photograph of the Sites (Outlined in Red) and its Surrounding Habitats.

2.3 NATURA 2000 SITES IDENTIFIED

In accordance with the guidelines issued by the Department of the Environment and Local Government, a list of Natura 2000 sites within 15km of the proposed development have been identified and described according to their site synopses, qualifying interests and conservation objectives. In addition, any other sites further than this, but potentially within its zone of interest were also considered. The zone of impact may be determined by an assessment of the connectivity between the application site and the designated areas by virtue of hydrological connectivity, atmospheric emissions, flight paths, ecological corridors etc.

There are fourteen Natura 2000 designated sites within 15km of the application site. These designated areas and their closest points to the proposed development site are summarised in Table 1 and a map showing their locations relative to the application sites are shown in Figure 5. A full description of these sites can be read on the website of the National Parks and Wildlife Service (npws.ie).

Site Name & Code	Distance	Special Conservation Interests	Potential Effects?
Corliskea/Trien/Cloonfelliv Bog SAC 002110	3km south-west	<ul style="list-style-type: none"> • Active raised bogs • Degraded raised bogs still capable of natural regeneration • Depressions on peat substrates of the • Bog Woodland 	<i>No connectivity between the application site and this SAC, therefore there is no potential for significant effects on this site.</i>
Cloonchambers Bog SAC 000600	4km north-west	<ul style="list-style-type: none"> • Active raised bogs • Degraded raised bogs still capable of natural regeneration • Depressions on peat substrates of the Rhynchosporion • <i>Euphydryas aurina</i> Marsh Fritillary 	<i>No connectivity between the application site and this SAC, therefore there is no potential for significant effects on this site.</i>
Bellanagare Bog SAC 000592	6km north	<ul style="list-style-type: none"> • Active raised bogs • Degraded raised bogs still capable of natural regeneration • Depressions on peat substrates of the Rhynchosporion 	<i>No hydrological connectivity between the application site and this SAC, therefore there is no potential for significant effects on this site.</i>

Bellanagare Bog SPA 004105	6.1km north	<ul style="list-style-type: none"> Greenland White-fronted Goose(<i>Anser albifrons flavirostris</i>) 	<i>No hydrological connectivity between the application site and this SPA, therefore there is no potential for significant effects on this site.</i>
Drumalough Bog SAC 002338	6.2km north-west	<ul style="list-style-type: none"> Active raised bogs Degraded raised bogs still capable of natural regeneration Depressions on peat substrates of the Rhynchosporion 	<i>No connectivity between the application site and this SAC, therefore there is no potential for significant effects on this site.</i>
Kilsallagh Bog SAC 000285	9.6km south	<ul style="list-style-type: none"> Active raised bogs Degraded raised bogs still capable of natural regeneration Depressions on peat substrates of the Rhynchosporion 	<i>No connectivity between the application site and this SAC, therefore there is no potential for significant effects on this site.</i>
Croaghill Turlough SAC 000255	10.9km south-west	<ul style="list-style-type: none"> Turloughs 	<i>No connectivity between the application site and this SPA, therefore there is no potential for significant effects on this site.</i>
Carrowbehy / Caher Bog SAC 000597	10.9km north-west	<ul style="list-style-type: none"> Active raised bogs Degraded raised bogs still capable of natural regeneration Depressions on peat substrates of the Rhynchosporion 	<i>No connectivity between the application site and this SAC, therefore there is no potential for significant effects on this site.</i>
Mullygollan Turlough SAC 000612	11.1km east	<ul style="list-style-type: none"> Turloughs 	<i>No connectivity between the application site and this SAC, therefore there is no potential for significant effects on this site.</i>
Coolcam Turlough SAC 000218	12.2km south-west	<ul style="list-style-type: none"> Turloughs 	<i>No connectivity between the application site and this SAC, therefore there is no potential for significant effects on this site.</i>
Lisnageeragh Bog and Ballinastack Turlough SAC 000296	13.2km south	<ul style="list-style-type: none"> Turloughs Active raised bogs Degraded raised bogs still 	<i>No connectivity between the application site and this SAC, therefore there</i>

		<p>capable of natural regeneration</p> <ul style="list-style-type: none"> • Depressions on peat substrates of the Rhynchosporion 	<p><i>is no potential for significant effects on this site.</i></p>
Williamstown Turloug SAC 002296	13.7km south-west	<ul style="list-style-type: none"> • Turloughs 	<p><i>No connectivity between the application site and this SAC, therefore there is no potential for significant effects on this site.</i></p>
Cloonshanville Bog SAC 000614	14.5km north	<ul style="list-style-type: none"> • Active raised bogs • Degraded raised bogs still capable of natural regeneration • Depressions on peat substrates of the Rhynchosporion • Bog woodland 	<p><i>No hydrological connectivity between the application site and this SAC, therefore there is no potential for significant effects on this site.</i></p>
Errit Lough SAC 000607	14.9km north-west	<ul style="list-style-type: none"> • Hard oligo-mesotrophic waters with benthic vegetation of Chara spp. 	<p><i>No hydrological connectivity between the application site and this SAC, therefore there is no potential for significant effects on this site.</i></p>

Table 1 – Natura 2000 Sites Within 15km of the Proposed Site

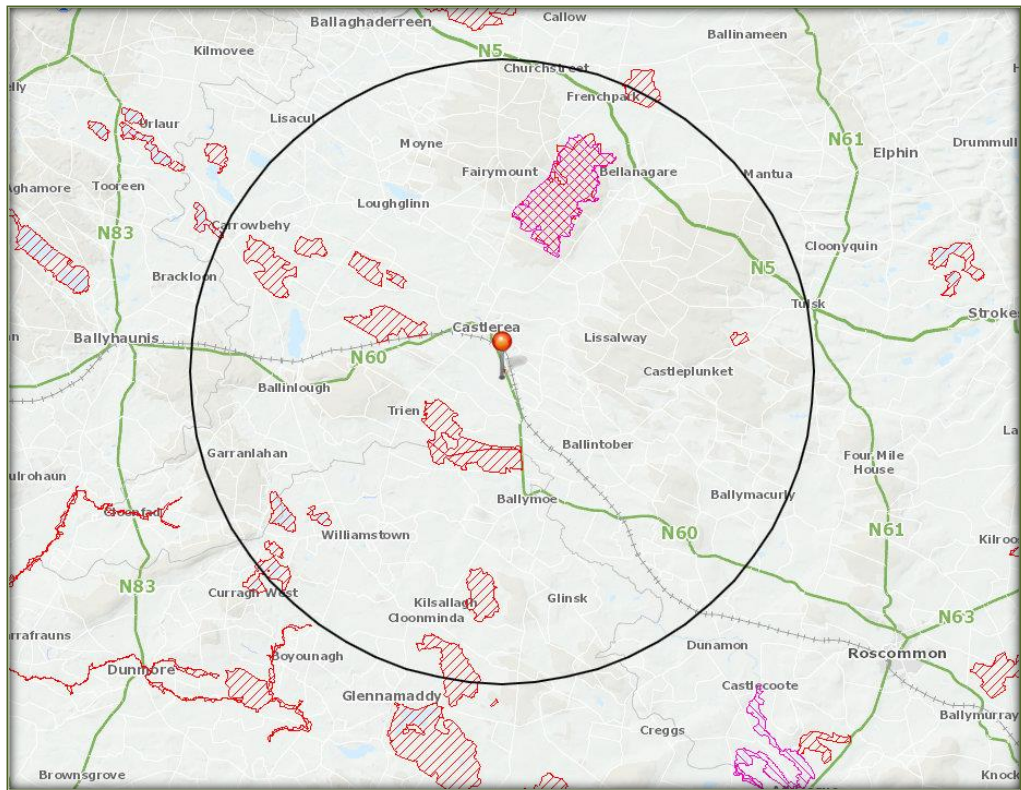


Figure 5 – The Application Site (Pinned) in relation to the Natura 2000 Sites within 15km. SACs – Red Hatching; SPAs – Pink Hatching

2.4 IMPACT ASSESSMENT

The potential effects of the proposed development on the Natura 2000 sites identified above are described below.

Describe the individual elements of the project (either alone or in combination with other plans or projects) likely to give rise to impacts on nearby Natura 2000 site:

The construction and operation of the proposed development will have no significant effects upon the integrity or the site structure of the designated sites identified. There are no individual elements of the proposed project that are likely to give rise to significant negative effects on any of these aforementioned sites. There will be no direct, indirect or cumulative effects upon any designated site arising from the construction or operation of the proposed development.

Describe any likely direct, indirect or secondary impacts of the project (either alone or in combination with other plans or projects) on the nearby Natura 2000 sites by virtue of:

Size and scale: Given the small size and scale of the development in relation to the overall size of the designated sites identified, the likelihood of any direct, indirect or cumulative effects on these designated sites arising from the construction and operation of the proposed development is low.

Land-take: There will be no land-take from any designated site. There will be no interference with the boundaries of any designated site.

Distance from Natura 2000 site or key features of the site: There are fourteen Natura 2000 sites within 15km of the application sites. The closest of these is the Corliskea/Trien/Cloonfelliv Bog SAC and this is 3km south-west of the application site. There is no connectivity between the application site and this SAC and therefore significant effects upon this SAC can be ruled out.

Resource requirements (water abstraction etc.): No resources will be taken from any Natura 2000 site and there are no resource requirements that will impact upon any designated site.

Emissions: There are no drains or streams within or adjacent to the application site. Neither the construction nor the operation of the proposed development will result in any emissions to any watercourses that lead to any designated site. Construction works will be mostly internal, and no significant excavation or groundworks will be required.

During operation, wastewater will be directed to an existing onsite wastewater treatment plant, which has additional capacity available for the two renovated houses.

Excavation requirements: There will be no excavation works in any designated area.

Transportation requirements: There will be no additional transportation requirements resulting from the proposed development and associated works that will have any impact upon the Natura 2000 sites identified.

In-Combination / Cumulative Impacts: The proposed application was considered in combination

with other developments or proposed developments in the Castlerea area. A number of other developments (domestic / commercial) have been granted planning permission in the preceding five years. Any future individual application that has the potential to impact upon a Natura 2000 site will be subject to Appropriate Assessment as required under Article 6(3) of the Habitats Directive. The proposed development will have no impacts upon any designated site when it is considered in combination with other developments that have been properly screened for AA or where mitigation has been carried out as part of an NIS.

Duration of construction, operation, decommissioning etc: Once construction begins, it should be complete within one to two years. Operation of the site will be ongoing.

Describe any likely changes to the nearby Natura 2000 sites arising as a result of:

Reduction of habitat area: The proposed development lies outside the boundaries of the Natura 2000 sites identified in Section 3.3. There will be no reduction of designated habitat area within any SAC or SPA. There will be no effects upon the habitat qualifying interests of any designated site.

Disturbance to key species: There will be no direct disturbance to any species listed in Annex I of the Birds Directive or Annex II of the Habitats Directive. There will be no impacts upon any protected species arising from the construction or operation of the application site.

Habitat or species fragmentation: There will be no habitat or species fragmentation within any SAC or SPA. No ecological corridors between the proposed site and the Natura 2000 sites identified will be damaged or destroyed.

Reduction in species density: There will be no reduction in species density within the SAC and SPA.

Changes in key indicators of conservation value (water quality etc.): There will be no negative impacts upon surface or ground water quality within any SAC or SPA. There will be no negative impacts upon the water quality in any designated site, specifically the Harristown Stream or the River Suck.

Describe any likely impacts on the nearby Natura 2000 sites as a whole in terms of:

Interference with the key relationships that define the structure or function of the site: It is not considered likely that there will be any impacts on the key relationships that define the structure or function of the Natura 2000 sites identified.

Provide indicators of significance as a result of the identification of effects set out above in terms of:

Loss - Estimated percentage of lost area of habitat: None

Fragmentation: None

Disruption & disturbance: None

Change to key elements of the site (e.g. water quality etc.): None

2.5 FINDING OF NO SIGNIFICANT EFFECTS

Finding of No Significant Effects Report Matrix	
Name of project	A Proposed Part 8 Development at the Brí Chaoilinne Halting Site, Harristown, Castlerea, Co. Roscommon
Name and location of Natura 2000 site	There are fourteen Natura 2000 sites within 15km of the application sites. The closest of these is the Corliskea/Trien/Cloonfelliv Bog SAC and this is 3km south-west of the application site. There is no connectivity between the application site and this SAC and therefore significant effects can be ruled out.
Description of project	A Proposed Part 8 Residential Development
Is the project directly connected with or necessary to the management of the site?	No
Are there other projects or plans that together with project being assessed could affect the site?	No
The Assessment of Significance of Effects	
Describe how the project is likely to affect the Natura 2000 site	Having regard to the location, nature and scale of the proposed development, it is considered that there is no potential for significant effects either from the proposed development on its own or in combination with other plans and projects.
Explain why these effects are not considered significant	Not applicable as there is no potential for negative impacts
Describe how the project is likely to affect species designated under Annex II of the Habitats Directive.	No impacts likely
Data Collected to Carry out the Assessment	
Who carried out the assessment	Noreen McLoughlin, MSC, MCIEEM. Consultant Ecologist
Sources of data	NPWS, EPA, National Biodiversity Data Centre, Roscommon County Council
Level of assessment completed	Stage1 Appropriate Assessment Screening
Where can the full results of the assessment be accessed and viewed	Full results included

3 APPROPRIATE ASSESSMENT CONCLUSION

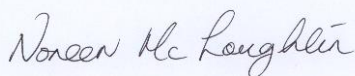
In accordance with Article 6(3) of the Habitats Directive, the relevant case law, established best practice and the precautionary principle, this AA Screening Report has examined the details of the project in relation to the relevant Natura 2000 sites within 15km of the application site.

At this stage of the AA process, it is for the competent authority, i.e., Roscommon County Council, to carry out the screening for AA and to reach one of the following determinations:

a) AA of the proposed development is required if it cannot be excluded, on the basis of objective information, that the proposed development, individually or in combination with other plans or projects, will not have a significant effect on any European sites;

b) AA of the proposed development is *not* required if it can be excluded, on the basis of objective information, that the proposed development, individually or in combination with other plans or projects, will not have a significant effect on any European sites.

It is of the opinion of the author that an AA of the proposed development is not required as significant effects upon all designated sites identified within 15km can be ruled out.



Noreen McLoughlin, MSc, MCIEEM.
Ecologist.

(PI Insurance details available on request)

Appendix I: FURTHER ECOLOGICAL RECOMMENDATIONS

Whilst the proposed development will have no impacts upon the integrity of any area that has been designated as a Natura 2000 site, it is usually best practice to undertake certain mitigation measures during the construction and operation of any development. These measures will help to protect the local biodiversity of the surrounding area and ensure the protection of local wildlife and water quality. Therefore it is recommended that the following measures are implemented: *(It should be noted that these recommended measures are **not** designed for the protection of any Natura 2000 site. Their presence does not indicate that a Stage II Appropriate Assessment is needed and they are fully outside of the Appropriate Assessment process).*

- Prior to the demolition of the building on the site, it must be checked for the presence of bats by a suitably experienced ecologist.