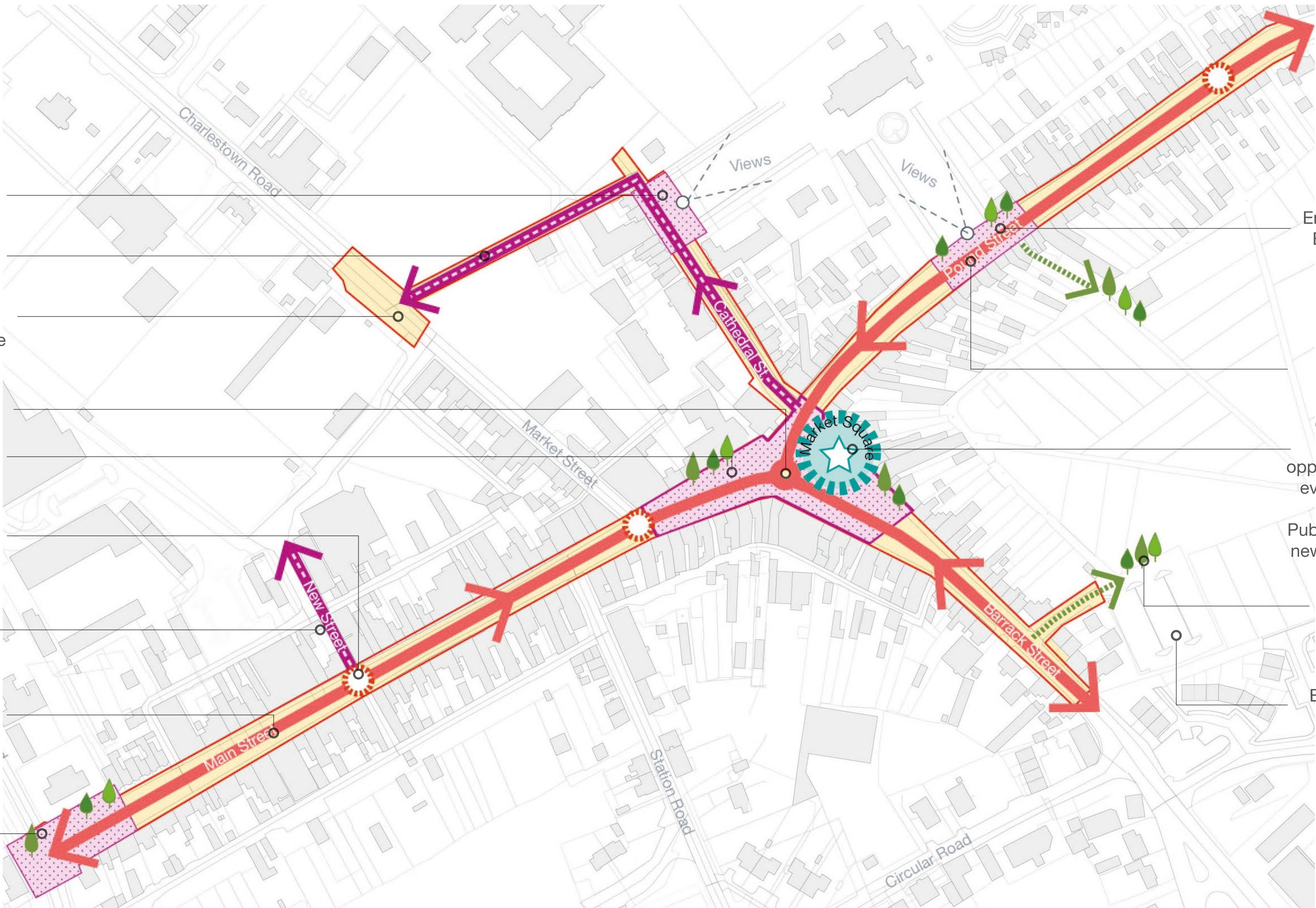


THE FUTURE OF BALLAGHADERREEN

Roscommon County Council intend to enhance Main Street, Pound Street, Barrack Street, and Cathedral Street (see highlighted in the map below). The Design Vision sets out to create a thriving town centre, creating safer pedestrian spaces whilst formalising and rebalancing the streets and roads around them. The design aims to follow the guiding principles set out below:



Enhance entrance to the Cathedral by creating a new public space and formalise car park access

Create 1 way traffic flow to promote a safer pedestrian experience

Relocate Bus Stops to reduce vehicular dominance within Market Square

Proposed mini roundabout junction

Proposed cycle stands to encourage and support local cyclists

Create a safer pedestrian crossing experience for all users and ages

Create a one way traffic flow to New Street to create a safer environment

Reduce road widths to rebalance & formalise parking spaces and provide wider footpaths

Create new gateway entrance to Main Street with wider footpath, seating and new planting

Enhance Cathedral Entrance with new public space

Relocate Bus Stops to reduce vehicular dominance within Market Square

Create new public square with opportunities for local events and promote local businesses. Public square to have new planting, seating and lighting.

Encourage future links to celebrate green path ways

Encouraged use of the Plots car park

Proposed Planting and Materials Diagram



1. New proposed low level planting and street trees



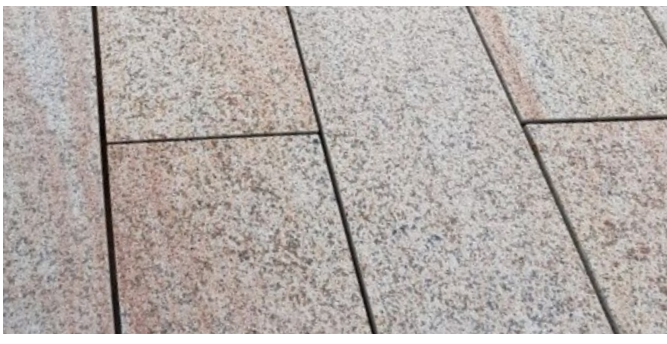
2. Grass Joint Paving



3. Asphalt footpath with decorative surface dressing



4. Silver Grey Granite Paving



5. Feature Paving



6. Street Lighting



7. Tourist Information Board



8. Timber Bench

9. Cycle Stands

Roscommon County Council are looking to transform Ballaghaderreen Town Centre into a space that functions for its residents, local businesses and visitors. Part of this transformation is providing a new flexible public event space and market square.

“To enhance the streets and spaces of Ballaghaderreen by reorganisation of roads, footpaths and parking opportunities. Creating an environment that encourages people to dwell and explore, and businesses to thrive. This includes improving the access for all, cycle infrastructure, quality of materials, street furniture and adding more greenery.”

Design Vision, BDP & RCC 2021



SCAN ME

Scan the QR code and help shape our Town. Visit <http://www.roscommoncoco.ie/!3OR6TG> and leave your comments.

CONSULTATION ON PROPOSED NEW LAYOUT FOR THE TOWN CENTRE



Comhairle Contae
Ros Comáin
Roscommon
County Council



Tionscadal Éireann
Project Ireland
2040

BDP.

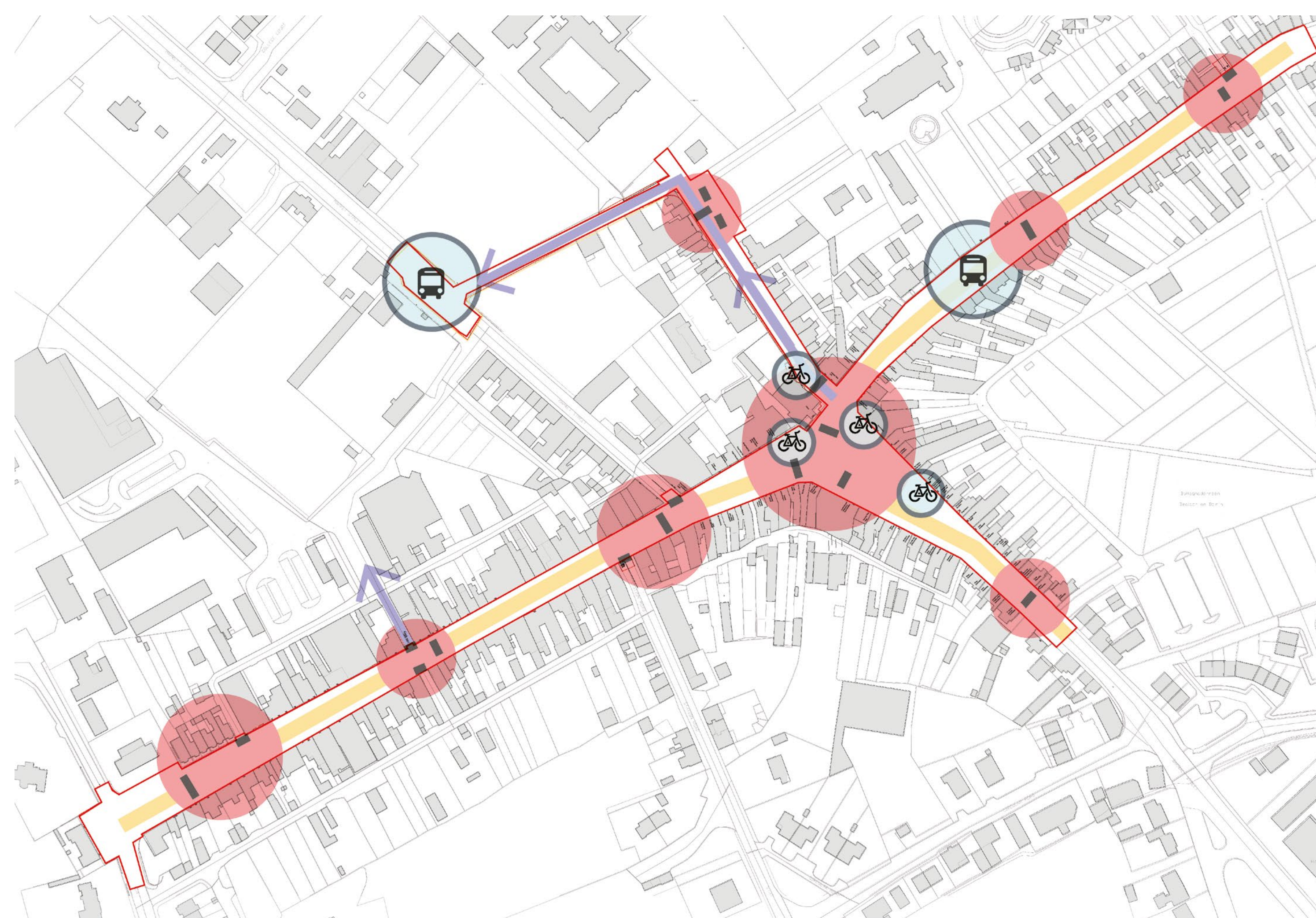
PUBLIC REALM DESIGN PRINCIPLES

The artist impression below captures the design intention for the heart of the town. Realigned roads, integrated parking, better crossing facilities, wider footpaths, more greenery and a new flexible events space and market square.



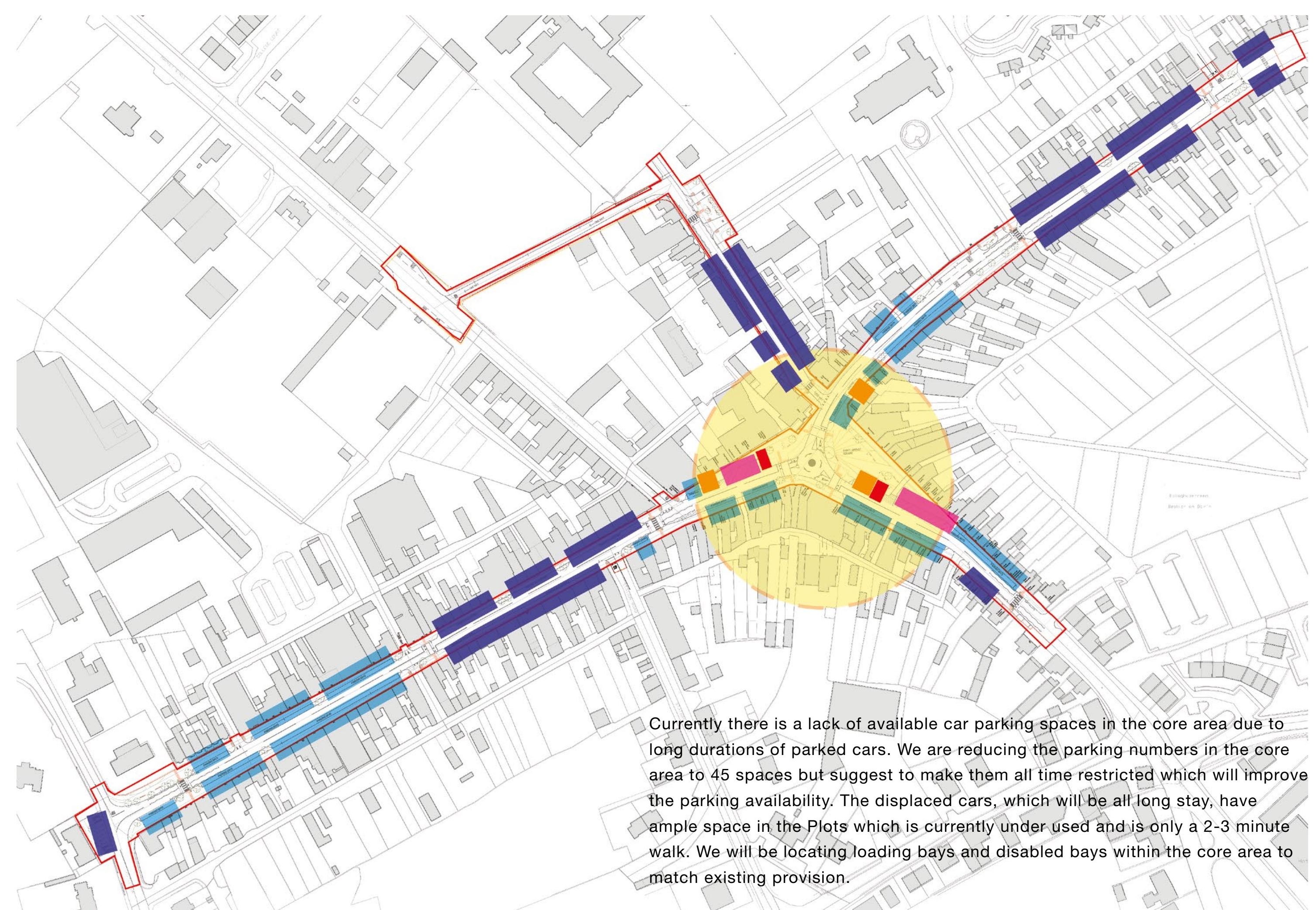
The Design is based on the following design guidelines:

- 01** Put people first. Design spaces for people.
- 02** Simplify the streetscape and make it easier to walk around the town.
- 03** Create memorable and identifiable spaces where people want to be.
- 04** Ensure consistency in design and use of materials.
- 05** Ensure that all public realm improvements support the functioning of the town centre.
- 06** Design spaces to be flexible and inclusive for multiple users and ages.



Proposed Transport Diagram

- Proposed One Way Road
- Reduced Width Carriageway
- Improved Road Junctions
- Proposed Bus Stops
- Proposed Cycle Stands
- Crossing Locations



Proposed Parking Diagram

- Existing Parking Retained
- Proposed Loading Bays
- Formalised On-Street Parking Bays
- Proposed Disabled Parking
- Proposed 45° Parking Bays
- Time Restricted Parking

Currently there is a lack of available car parking spaces in the core area due to long durations of parked cars. We are reducing the parking numbers in the core area to 45 spaces but suggest to make them all time restricted which will improve the parking availability. The displaced cars, which will be all long stay, have ample space in the Plots which is currently under used and is only a 2-3 minute walk. We will be locating loading bays and disabled bays within the core area to match existing provision.



SCAN ME

CONSULTATION ON PROPOSED NEW LAYOUT FOR THE TOWN CENTRE

Scan the QR code and help shape our Town. Visit <http://www.roscommoncoco.ie/!3OR6TG> and leave your comments.