

Memorials & Graveyards Database

Information for Users

April 2005



Developed by Catherine Casey, Laois Heritage Officer, Laois County Council

An Action of the County Roscommon Heritage Plan 2004-2008



CONTENTS

1. Introduction.....	1
Memorials & Graveyards Database.....	1
Technical Information	1
This Manual.....	2
2. Getting Started	3
3. Standard Tools.....	5
4. Adding or editing graveyard data	6
5. Adding or editing memorial Data	8
General Details	9
Physical Description	10
Symbols	11
People Commemorated.....	11
Photographs	12
6. Reports.....	14
1. Booklet Report sorted by Surname.....	15
2. Panel Report, sorted by Memorial Number	15
3. Panel Report, grouped by graveyard, sorted by Surname	16
Appendix 1: Memorial Recording Form	17
Appendix 2: Codes for Recording Co. Roscommon Graveyards & Memorials.....	20

1. Introduction

Memorials & Graveyards Database

The Memorials and Graveyards Database has been developed as an aid to community and other groups, to assist in the standardised recording of memorial information and associated data on graveyards.

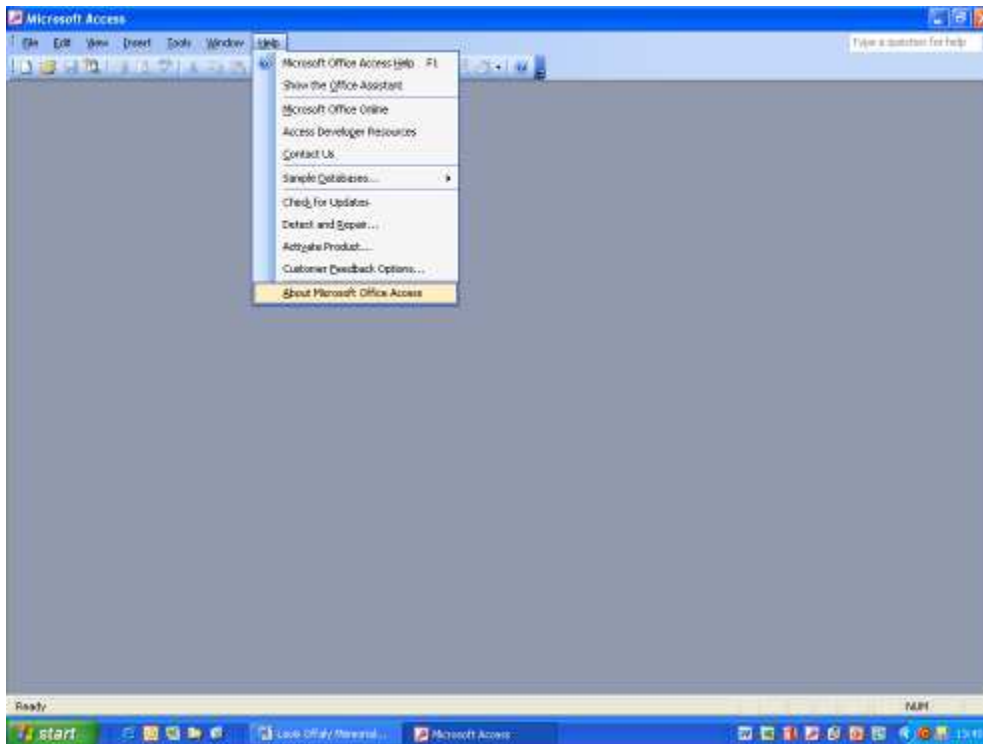
The database and this users manual are supplied free of charge on the understanding that they will be used only for local and community development purposes. In return, users are requested to send a copy of data once entered to the Heritage Office of their Local Authority, in order that information on memorials and graveyards in each county may be stored, validated and made available to the public from a central location.

The database and this manual have been produced as part of a pilot project run by the Heritage Offices of Laois and Offaly County Councils, with the support of the Heritage Council.

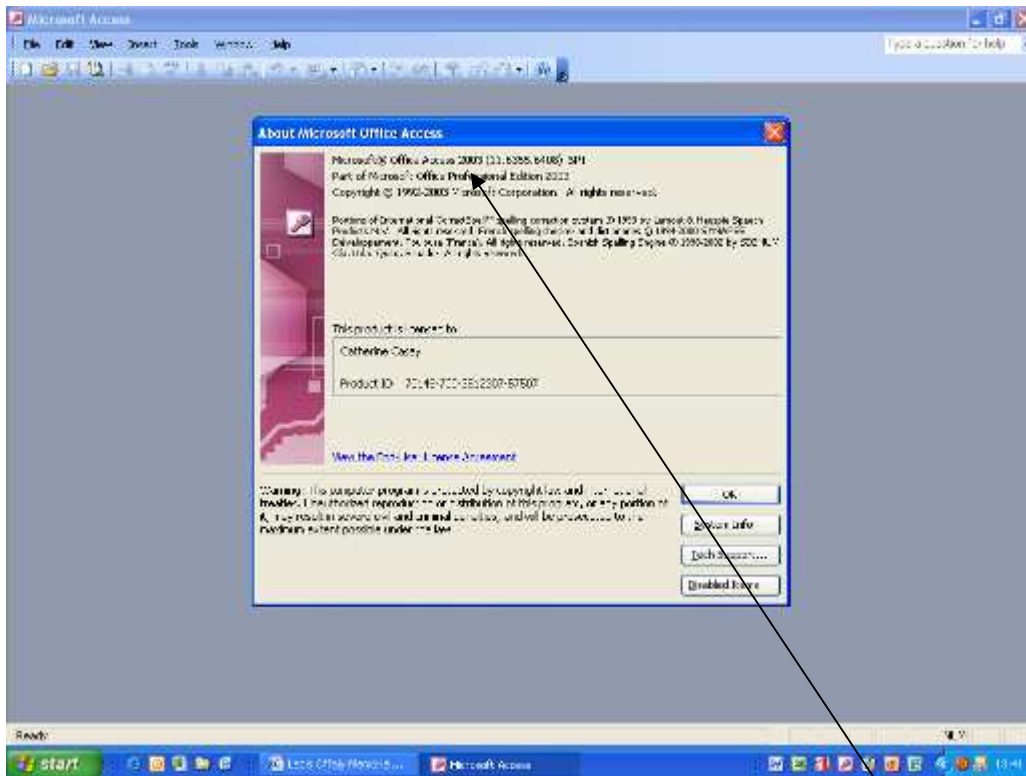
Technical Information

The Memorials and Graveyards Database uses the Microsoft database programme *Access*. To run this database, a PC with Windows 98, Windows 2000 or Windows XP Operating System is required. Access is available as a part of the Microsoft Office package, which also includes Word, Excel and PowerPoint.

Currently, a version of Microsoft Access must be installed on the PC before the Memorials and Graveyards Database can be used. It is important that users check which version of Access is on their machine, and install the relevant file from the CD. To check, open Microsoft Access (using the Start Menu), and Click *Help – About Microsoft Access*, as shown below.



A new window will open, similar to the one shown here.



The user will be able to read the version of Microsoft Access installed on the Machine from this window. In the example above, the Computer in question is running Access 2003.

Other Versions of Access include Access 97, Access 2000 and Access 2002. In the current release, the Memorials and Graveyards Database CD contains a version of the database for users of Access 97, Access 2000 and Access 2003. It is intended that future release of the Memorials Database will be available for use on computers which do not have Microsoft Access installed.

Further information on Microsoft Office and Microsoft Access is available on the internet at <http://office.microsoft.com/en-gb/default.aspx>.

This Manual

This manual is aimed at new users of the Memorials and Graveyards Database. It assumes a good basic knowledge of computers using the Windows Operating System. It does not assume a detailed knowledge of Microsoft Access.

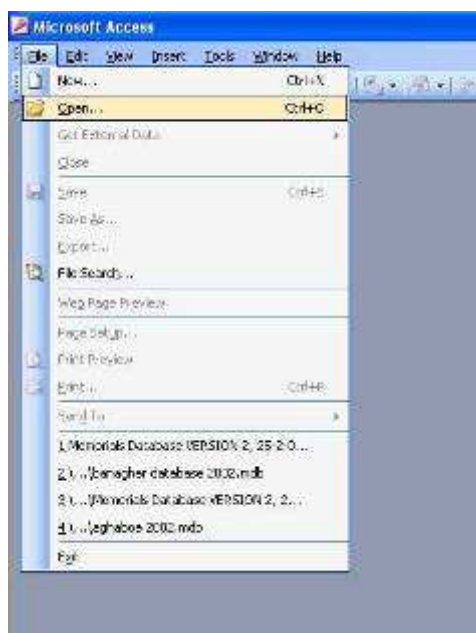
It describes in a step-by-step form the start-up of the programme (Section 2), Standard editing tools (Section 3), the data-entry process for graveyards (Section 4) and memorial records (Section 5), and the use of the standard reporting (Section 6).

2. Getting Started

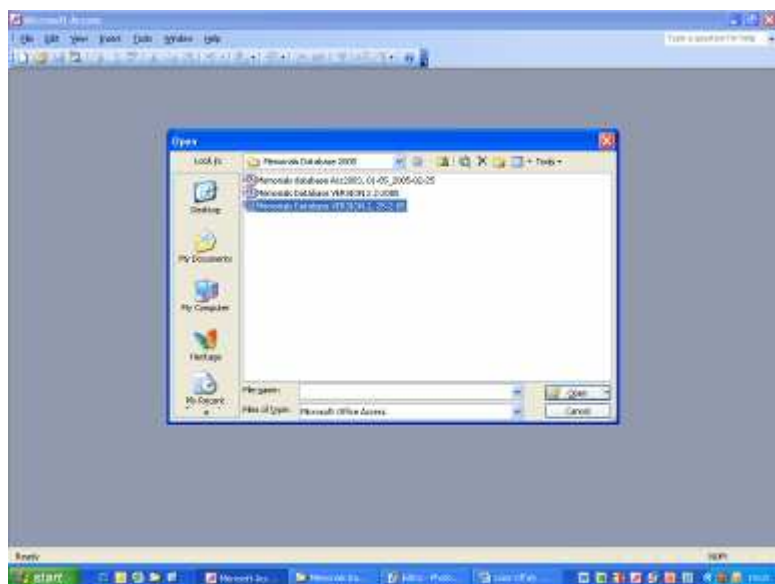
Create a folder on your C:\ drive called *Memorials Database*. Check the Version of Microsoft Access on your computer (see Section 1), and copy the relevant Database into the new Memorials Database folder on your hard drive.

Open Microsoft Access (usually located in *Start Menu*, under *Programmes*, possibly inside a folder called *Microsoft Office*)

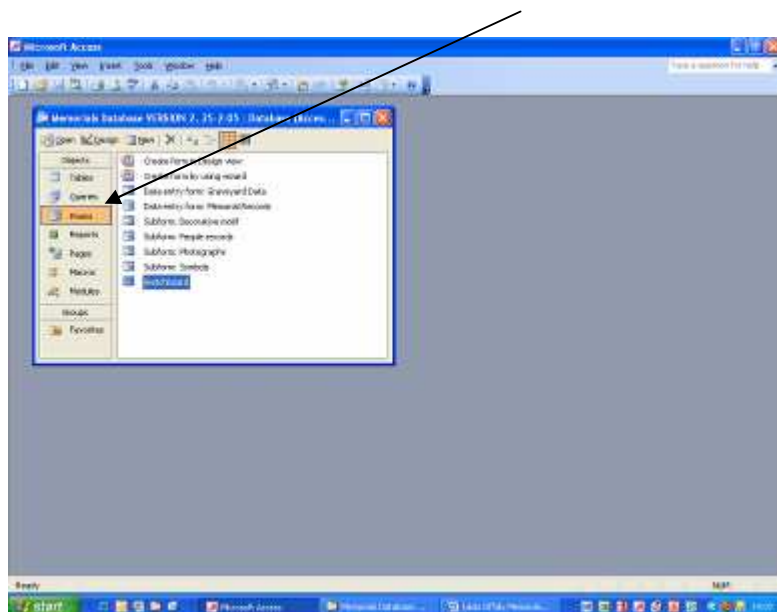
Click *File – Open*



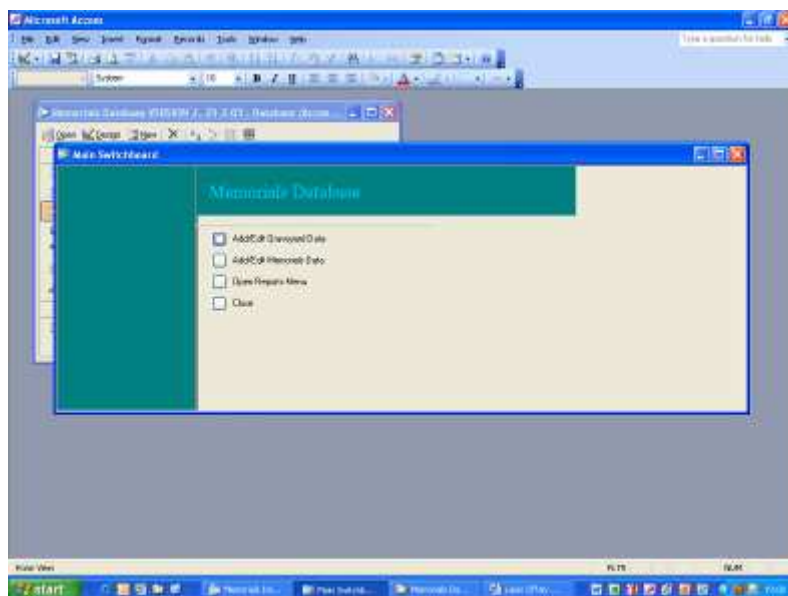
Browse to the Location on your computer's hard drive where the Memorials Database is stored, highlight the file and click *Open*



The start-up Screen will look as below. Ensure that the box showing “Forms” is selected.



Double-Click on *Switchboard* to open the Main Menu



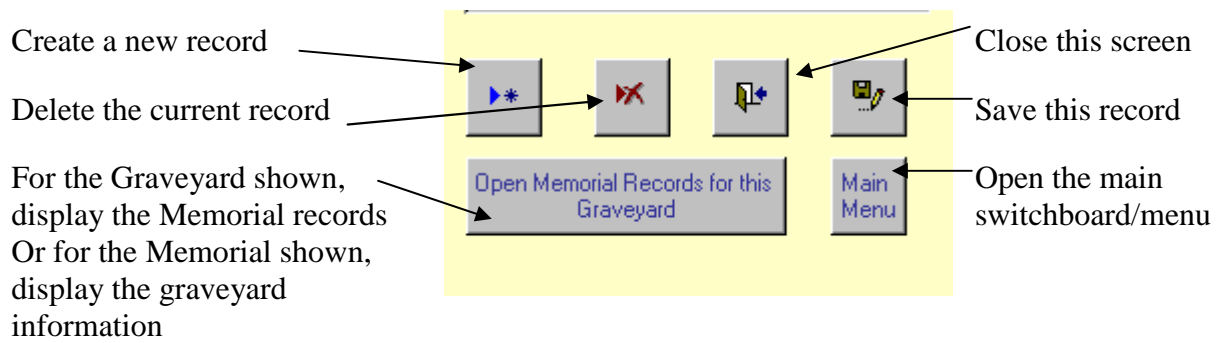
To select one of the options, click once on the corresponding button. To exit, click on the button beside *Close*.

The following sections deal with each of the options in turn:

- Adding or editing graveyard data
- Adding or editing memorial Data
- Reports

3. Standard Tools

Each of the data entry screens contains a number of standard tools, as shown below



4. Adding or editing graveyard data

Standard information for each graveyard must be set up before any memorials information is entered. This is because each graveyard will be given a unique code (available from the Heritage Office), and all of the individual memorials will then be linked to this code.

The data entry screen for adding or editing Graveyard information looks like this:

MEMORIALS TEST - [Data entry form: Graveyard Data]

File Edit View Insert Format Records Tools Window Help

Type a question for help

MS Sans Serif 8 B I U

Graveyard Information

Graveyard name	Aghaboe	Enclosure		Comments
Graveyard number	LS-AGB	Gateway		
RMP Number		Growth		
Townland		Oldest stone year		
County	Laois	Newest stone year		
Grid reference		Condition of grave		
Owner		Condition of sign		
Nearest Road		Signs of vandalism	<input type="checkbox"/>	
Size of graveyard (Ha)	0	Contains Veterans' Graves		
Length (metres)	0			
Width (metres)	0			
Number of burials	0			
Terrain				

Open Memorial Records for this Graveyard Main Menu

Memorials Database Version 2, Feb 2005

Record: 1 of 2

Form View

NUM

Start Sen... Laoi... Gra... C:\... Me... Dat... 14:30

Graveyard Name

Enter the name by which the graveyard is most commonly known.

Graveyard number

This should be a unique and clear identifier. Graveyard codes start with a county identifier (eg LS, for Laois in the example here), then a graveyard identifier, (eg AGB for Aghaboe, in the example above). It is essential that the correct code is used, as the individual memorials will each have a unique code based on the graveyard code. If the graveyard code on the Field Recording forms does not have this format, please contact your local Heritage Office before entering the data.

RMP Number

If the graveyard is in the Record of Monuments and Places, the RMP Code should be used. Otherwise, this can be left blank.

Townland

Enter the Townland in which the graveyard is located. If more than one, type further Townland names, separated by commas.

County

Select from the drop-down list

Grid Reference

Enter the 6-figure national Grid reference, with letter

Owner

Add details of the owner of the graveyard, if known

Nearest Road

Give details of the nearest road, if this may help to locate the graveyard

Size, length and width

Enter, as accurately as possible, the area (in hectares) and the length and width (in metres) of the graveyard.

Number of Burials

Enter the number of burials, if known

Terrain, Enclosure, Gateway, Growth

Select each of these fields from the drop-down list. If no entry on the list matched the entry on the recording form, type in the words on the recording form.

Oldest and Newest stones

Enter the year of the oldest stone and the youngest stone in the graveyard

Condition of graveyard, Condition of sign

Select from the drop-down list

Signs of vandalism

Tick if there is evidence of vandalism in the graveyard, and add further details in comments section, if necessary

Contains Veteran's Graves

If the graveyard contains veteran's graves, select the relevant period from the drop-down list, and add further details in comments section, if necessary

Comments

Add comments as relevant on any of the aspects of the graveyard not covered fully by the categories above.

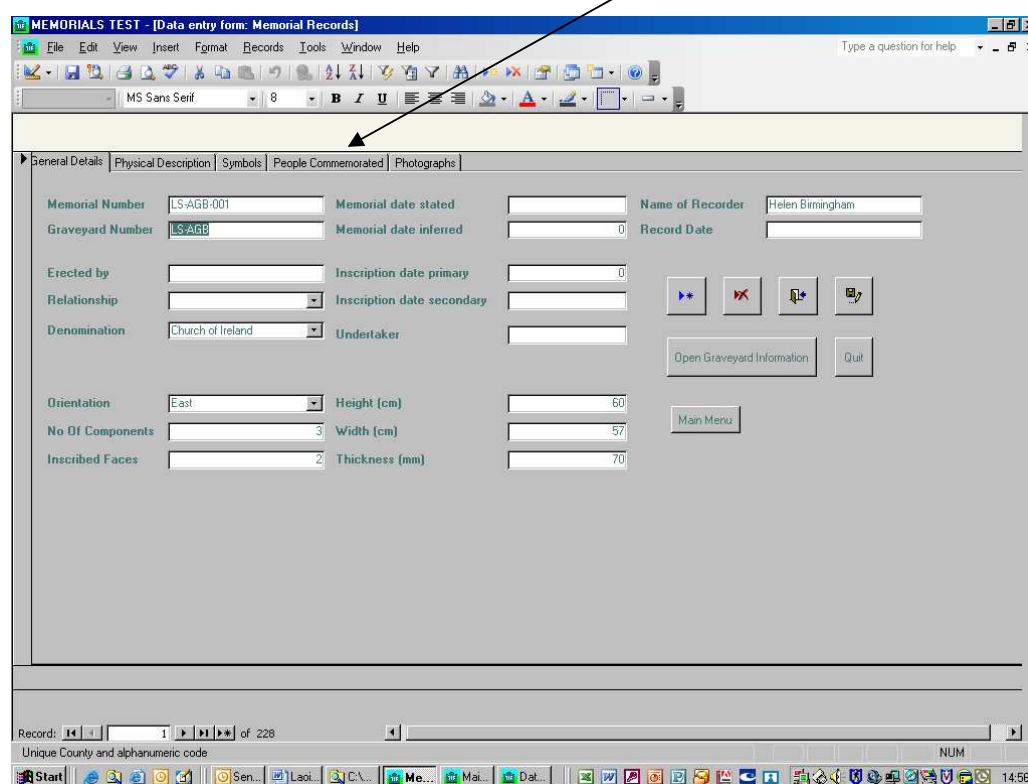
5. Adding or editing memorial Data

Open the Memorials data entry form by clicking on *Add/Edit Memorials Data* in the Main Menu.

There are five screens to the Memorials Information Form. They are:

- General Details
- Physical Description
- Symbols
- People commemorated
- Photographs

The General Details screen (below) opens first by default and is the only screen which shows the Standard Editing Tools described in Section 3. You can browse between the screens by clicking once on the “tabs” at the top of the form, here:



Complete each of the fields in order, using the information on the Memorial Recording Form (see copy in Appendix 1). All of the information required should be located on the field recording form, but it may be displayed slightly differently to the way the forms appear on screen, and so it may take some time to get used to extracting the relevant details. It is important however that as much information as possible is recorded in the database, to ensure that full use is made of all the information which has been collected in the field.

Most of the fields are relatively straightforward, and information can be entered directly from the form. Where drop-down lists are available, they should be used. However, if a field has a drop-down list, and the data on the form is not on the list, the data on the form may be typed directly into the box.

The following information clarifies what is required in some of the fields where there may be confusion.

General Details

MEMORIALS TEST - [Data entry form: Memorial Records]

File Edit View Insert Format Records Tools Window Help

Type a question for help

MS Sans Serif 8

General Details Physical Description Symbols People Commemorated Photographs

Memorial Number LS-AGB-001 Memorial date stated Memorial date inferred 0 Name of Recorder Helen Birmingham Record Date

Erected by Relationship Denomination Church of Ireland Inscription date primary 0 Inscription date secondary Undertaker

Orientation East Height (cm) 60 No Of Components 3 Width (cm) 57 Inscribed Faces 2 Thickness (mm) 70

Open Graveyard Information Quit Main Menu

Record: 1 of 228 Unique County and alphanumeric code NUM

Start Sen... Laoi... C:\... Me... Mail... Da... 15:45

Memorial Number

Each memorial must have a unique number, associated with the code of the graveyard in which it is located. For example, in the graveyard used here, the Graveyard Code is LS-AGB (Aghaboe, Co Laois). In this case, the memorials are numbered LS-AGB-001, LS-AGB-002, LS-AGB-003 and so on.

The Memorial Number should be assigned on the recording form, but if it is not (or if the forms have the memorials numbered simply 1, 2, 3 etc), please check with the Heritage Office before starting to enter the data.

Memorial Date Stated versus Inferred

This refers to the date that the monument was erected, and can be extracted from the full inscription, on the reverse side of the Field Recording Form (See Appendix 1). Use “Memorial date stated” where the date that the monument was erected is clearly stated on the stone, eg “Erected by her loving husband, 1907”. Use the field “Memorial date inferred”, where the date the memorial was erected is not stated clearly, but can be accurately worked out from other information on the inscription.

Physical Description

MEMORIALS TEST - [Data entry form: Memorial Records]

File Edit View Insert Format Records Tools Window Help

Type a question for help

General Details Physical Description Symbols People Commemorated Photographs

Memorial Type 2 Headstones & surround

Memorial material Limestone

Stone top

Stonemason Tom Whelan Stoneworks, Bal

Technique of inscription Incised painted

Epitaph character

Letter style

Introductory term In loving memory of

Motto

Biblical quote

Condition of memorial Good

Condition of inscription Mini

Remarks 1b-80cm in H, 61cm in wth and 7cm th.

Inscription 1st In Loving Memory DITHOMAS JAMES (T.J.) YOUNG BALLYCLEARY DIED 14TH AUGUST 1995 AGED 30 YEARS RIP LOVED AND REMEMBERED EVERYDAY 1st In Loving Memory OF SEAMUS YOUNG BORN 12-8-84 DIED 22-9-64 HIS NIECE RACHAEL BYRNE BORN 6-10-91 DIED 7-10-91 RIP

Decorative motif

Circles ☐ Leaves ☐

Columns ☒ Ribbons ☐

Dog tooth ☐ Rope ☐

Egg and dart ☐ Swags of Cloth ☐

Foliage ☐ Triangles ☒

Foliage Scrolls ☐ Sun rays ☐

Unknown/illegible ☐ None ☐

Other

Tick all that apply. If a motif is recorded which is not listed here, type it into the box labelled "other"

Record: 1 of 228

Form View

Decorative Motif

This is recorded on the Field Survey Form as “Ornament”. Tick all that apply. For example, in the example above, the memorial was decorated with both Columns and Triangles, so both are ticked. If any other decorative motifs are recorded, type the details into the field marked “other”.

Inscription

The full inscription, as recorded on the reverse side of the field sheet, should be entered here, even if some of the information (eg names, dates) has been extracted and entered already. Enter the text exactly as it is laid out in the form, with the same line breaks. If it is not possible to break up the lines using “enter”, use a symbol to denote that the line breaks at a certain place. In the example above, a vertical line has been used to show where the lines break.

Symbols

The screenshot shows the 'Symbols' tab of the 'MEMORIALS TEST - [Data entry form: Memorial Records]' window. The window has a menu bar (File, Edit, View, Insert, Format, Records, Tools, Window, Help) and a toolbar. Below the tabs, there is a list of symbols organized in columns. Each symbol has a checkbox next to it. The symbols listed are:

- Altar
- Anchor
- Angel
- Angel flying
- Armorial shield
- Biblical Scene
- Book Closed
- Book Open
- Carpenter's Tool
- Cherubs head, wings only
- Cherub with body
- Cherub with trumpet
- Coffin
- Cross
- Other
- Cross: Celtic
- Cross: Gothic
- Cross: Lorraine
- Cross: Maltese
- Crossbones
- Crown
- Crown of Thorns
- Crucifixion
- Day of Judgement
- Dove
- Draped Urn
- Father time
- Figure of Death
- Flower with Stem broken
- Flower with sickle
- Grapes
- Gothic Window
- Hand
- Harp
- Heart
- Hour Glass
- IHS
- IHS in Sunburst
- IHS with Alpha/Omega
- IHS with cross
- INRI
- Ivy
- Lamb of God: cross, banner
- Lamb
- Marigold
- Memento Mori
- Moon
- Palm
- Pick
- Rosettes
- Round Tower
- Sacred tree
- Sacred Heart
- Sacred Heart: Sunburst
- Scythe
- Serpent
- Shamrock
- Shield
- Shell
- Skeleton
- Skull - Crossbones
- Spade
- Stone mason's Tools
- Sun
- Sunburst
- Sundial
- Stars
- Symbols of the Passion
- Tree
- Urn
- Vine
- Whirl-Gig
- Willow
- Winged hour glass
- Wolfhound

The 'Sun' symbol is checked. Below the list, there is a text box labeled 'Other' and a note: 'Tick all that apply. If a symbol is recorded which is not listed here, type it into the box labelled "other"'. At the bottom, there is a record navigation bar showing 'Record: 17 of 228' and a taskbar with various icons.

Tick all of the symbols that apply. In the example above, the memorial had a Gothic cross, a serpent and a sun, so all of these are ticked. If any symbols are recorded which are not listed, type the details into the field marked "other".

People Commemorated

The screenshot shows the 'People Commemorated' tab of the 'MEMORIALS TEST - [Data entry form: Memorial Records]' window. The window has a menu bar (File, Edit, View, Insert, Format, Records, Tools, Window, Help) and a toolbar. Below the tabs, there is a section for 'Number of people commemorated' with a value of 12. Below this is a table with the following columns: Surname, First Name, Address, Occupation, Birth, Death, Age, Sex, Relationship stated, Relationship inferred, and Memorial Number. The table contains four rows of data:

Surname	First Name	Address	Occupation	Birth	Death	Age	Sex	Relationship stated	Relationship inferred	Memorial Number
Cooke	John	Grannagh		7	11	1960	80	Male		
Cooke	Brigid M.			22	3	1974	77	Female	Wife	
Cooke	Ina (Kathleen)			23	8	1988	64	Female	Daughter	
Cooke	Sheila			13	10	1989	0	Female		

At the bottom, there is a record navigation bar showing 'Record: 55 of 228' and a taskbar with various icons.

Enter details of all the people commemorated on each memorial. When a record is opened first, there is just one line under “People Commemorated”, but as data is entered into one line, another appears to hold the next person’s details.

Date of Birth/Death

Enter the day, month and year of birth and the day, month and year of death. If the day and/or month have not been recorded, leave these fields blank.

Relationship Stated versus Inferred

Enter the relationship between the people commemorated, using the drop-down list. “Relationship Stated” should be used where the relationship is clearly stated on the memorial, eg “Sarah, his wife ...” etc. “Relationship inferred” should be used when the relationship is not stated, but can be worked out from the wording and chronology of the inscription.

Photographs

Photo No	Date taken	Caption	Photograph link
LS-AGB-047-01		Aghaboe	LS-AGB-047-01.jpg
*			

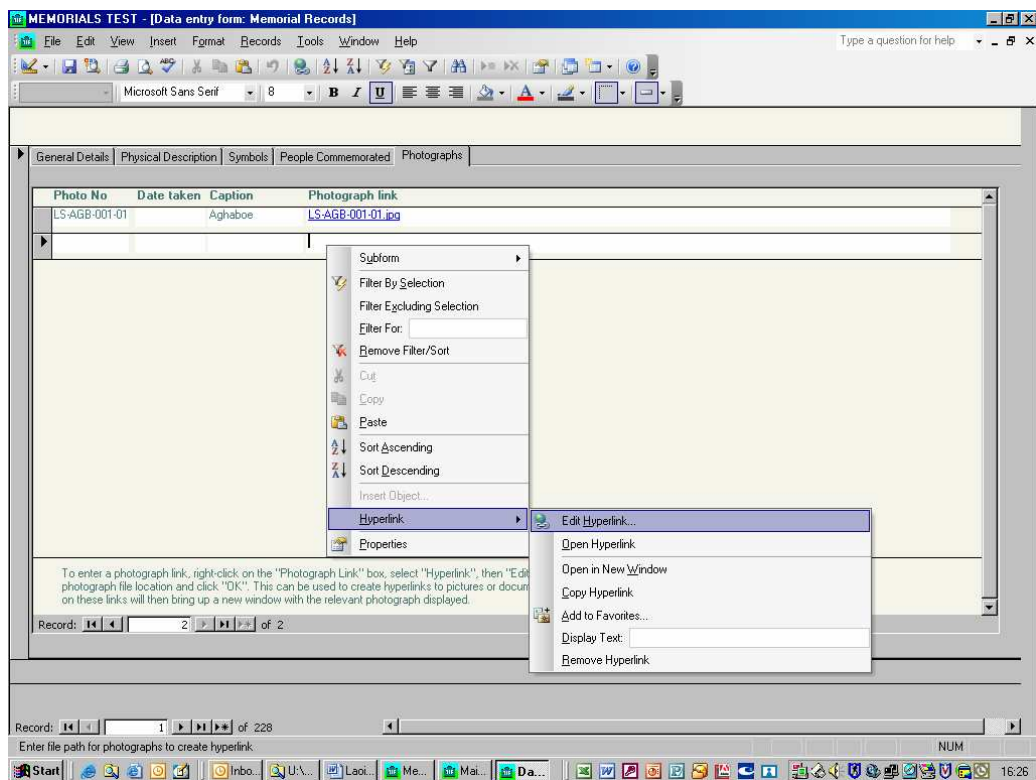
To enter a photograph link, right-click on the "Photograph Link" box, select "Hyperlink", then "Edit Hyperlink". Use the Browse box to locate the photograph file location and click "OK". This can be used to create hyperlinks to pictures or documents stored on the same computer or disc. Clicking on these links will then bring up a new window with the relevant photograph displayed.

Record: 1 of 1

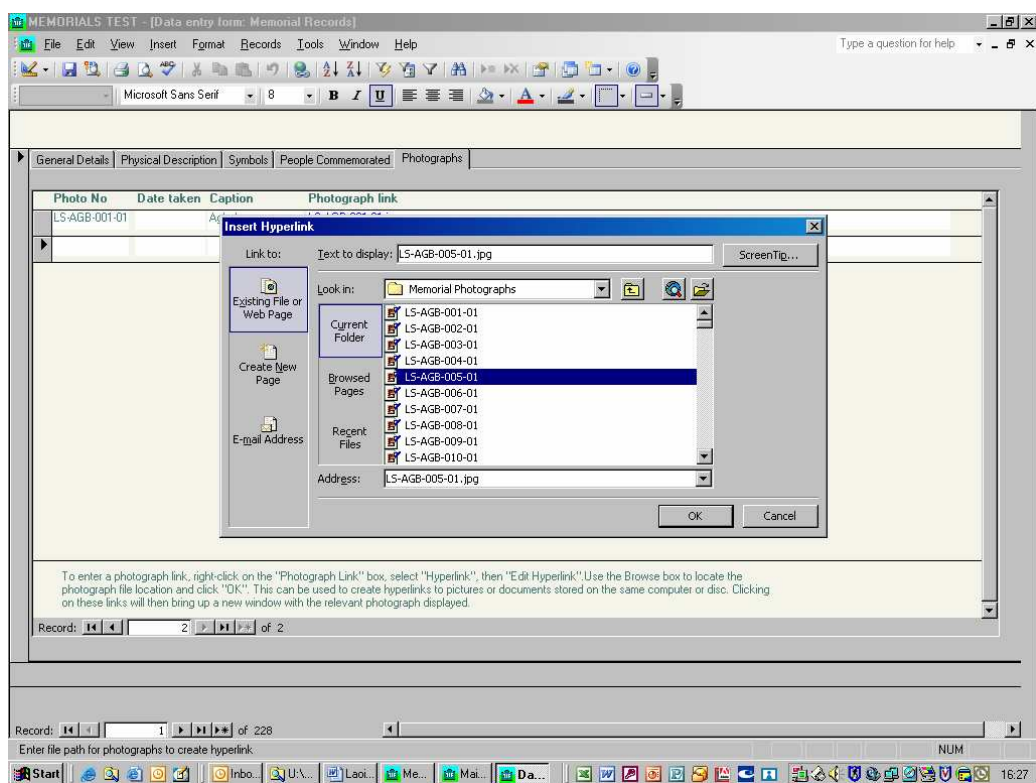
Where Photographs have been taken, these should be clearly labelled using the graveyard and memorial codes previously described. For example, in the record above, LS-AGB-047-01, the photograph is photo number one of memorial number 47 in Aghaboe Graveyard, Co Laois. Subsequent photos would be labelled LS-AGB-047-02, LS-AGB-047-03 and so on.

Photograph Link

A hyperlink entered into this box will allow the user to click and display the photograph associated with each Memorial Record. To enter a hyperlink to a photograph stored on the hard drive of the computer, right-click on the *Photograph Link* box, select *Hyperlink*, then *Edit Hyperlink*, as shown below.



Use the Browse box (shown below) to locate the photograph file location and click *OK*. Photographs should be stored in the C:\ drive of the Computer. It should be noted that when hyperlinks are created, if the database is copied onto another computer, these links will only work if the database and photographs are stored in the same folder on the new computer. For this reason, it is best to store the database and photographs in the C:\ Drive, in a folder called *C:\Memorials Database*, with the photographs in a folder inside this called *Memorial Photographs*.

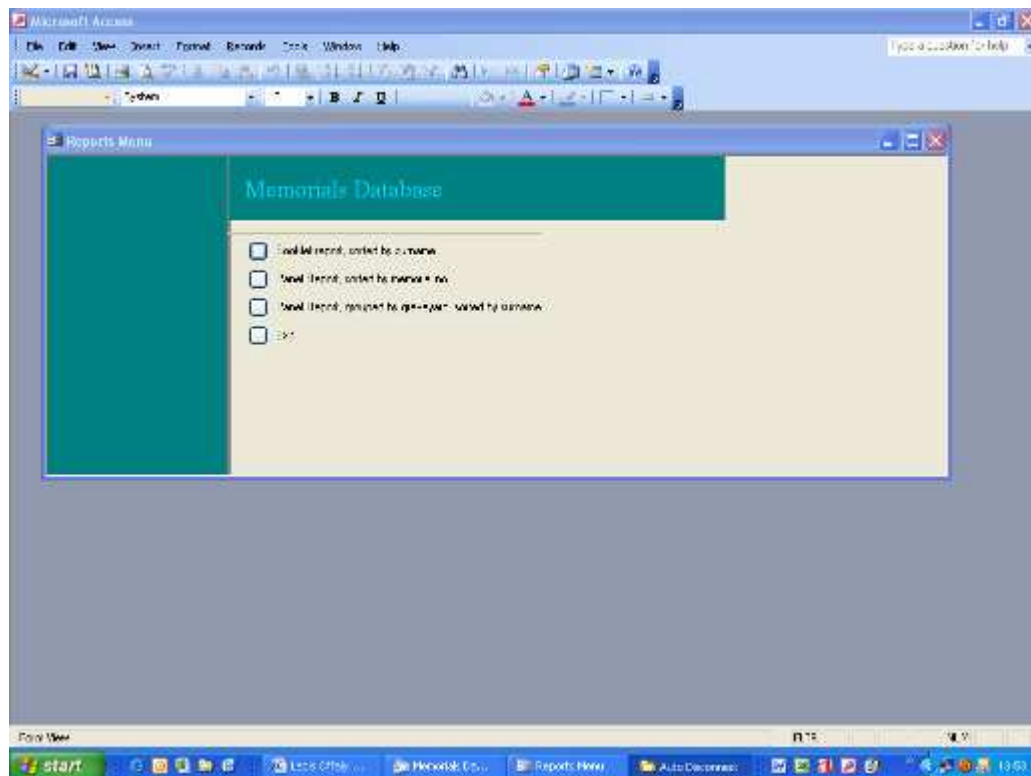


If no digital copy of the photograph is available, type the storage location of the relevant photograph into this field (eg Laois County Council archives, etc).

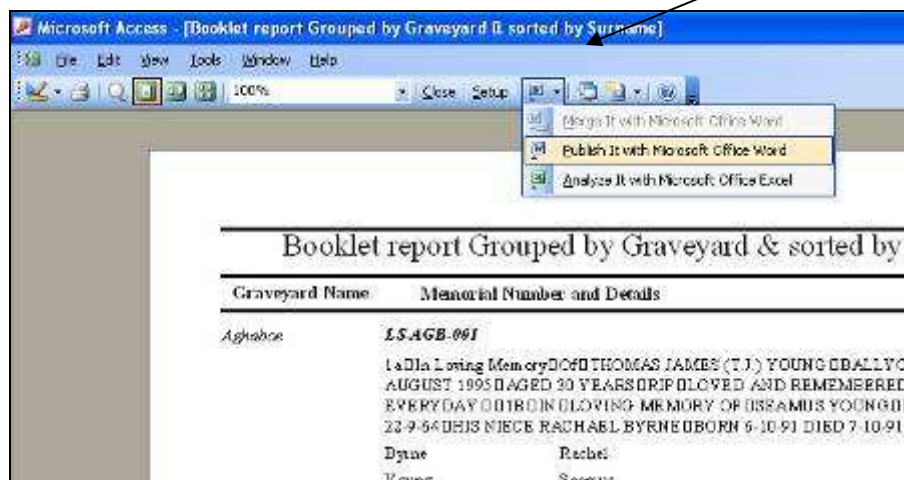
6. Reports

The database as supplied contains no graveyard or memorial records. The reports menu, therefore, will only display reports once the user group's own records have been entered and checked.

To open the Reports sub-menu, click *Reports* on the main menu. This brings up the screen below. This part of the database is still under development, and contains limited options at present. Currently, three standardised reports are available. To select one of the reports, click the button beside its title.



When each report is selected, the report opens up in a “preview” window. It can then be either Printed directly (Click *File – Print*), or exported to a Word file, by selecting the Word Icon, and *Clicking Publish it with Microsoft Word*. This will export the data in the report to a Word document, in the same layout as the report. It can then be modified in Word before printing.



The report options currently available are those thought most likely to be used by most groups:

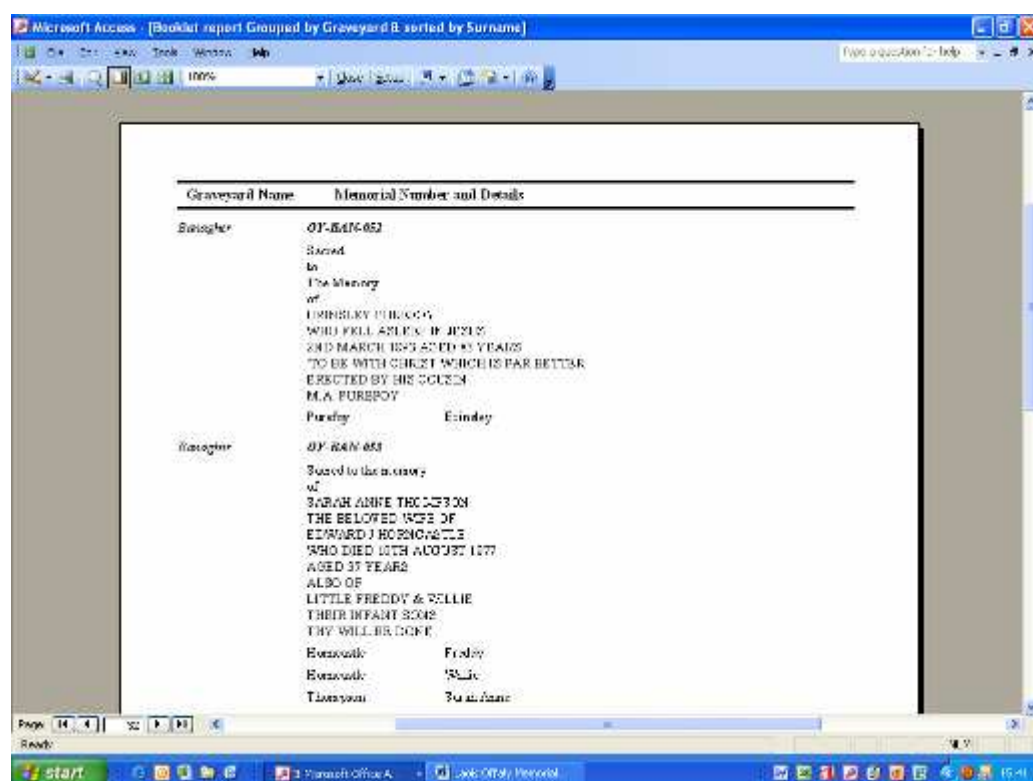
- Booklet Report sorted by Surname

- Panel Report, sorted by Memorial Number
- Panel Report, grouped by graveyard, sorted by Surname

Feedback from users and groups in relation to which other report templates would be useful, is particularly welcome.

1. Booklet Report sorted by Surname

This report contains the full inscription on each memorial and is intended for use if the group wishes to publish the details recorded in booklet form. As shown below, this report shows the data in the database, grouped by Graveyard (if there is more than one graveyard stored), and laid out in order of memorial number. Below the full inscription, the names of the people commemorated on each memorial are shown alphabetically.



2. Panel Report, sorted by Memorial Number

This report is intended for use in creating an information panel, which may be erected on site, or perhaps located on a website or CD. It lists the memorials in the graveyard sorted by memorial number, with each of the people commemorated listed alphabetically within each memorial.

[illegible]

3. Panel Report, grouped by graveyard, sorted by Surname

This report is intended for use in creating an information panel, which may be erected on site, to allow visitors to find certain memorials. It lists each of the people commemorated in the graveyard, alphabetically by Surname, showing the number of the memorial on which they are recorded. This type of information panel would also include a map of the graveyard, with the memorials numbered, to allow visitors to locate a specific grave. In the example used here (below) some of the memorials were partially or totally illegible, and the names on these memorials have been recorded using question marks, and listed first.

Microsoft Access [Panel Report sorted by surname]

File Edit View Tools Window Help

Type a question for help

100%

Close Setup

Report for use in graveyard panels

Sorted alphabetically by Surname

Surname	Forename	Born	Died	Memorial
Carson	Daniel			12-A-GS-082
?	?	22	6 1811	12-A-GS-072
?	?	11	3 1830	12-A-GS-123
?	Catherine	14	2 1858	12-A-GS-088
?	Lee			12-A-GS-071
?	Patrick	1	1 1798	12-A-GS-046
Abraham	Joseph	18	8 1789	12-A-GS-038
Abraham	May			12-A-GS-038
Abraham	William			12-A-GS-039
Abraham	William	11	3 1723	12-A-GS-035
B	May	26	2 1812	12-A-GS-125
Burns	Joseph T.	19	10 1904	12-A-GS-078
Burns	Louise	27	7 1942	12-A-GS-078
Burns	Thomas E.	28	12 1943	12-A-GS-078

Page: 1 2 3 4 5 6 7 8 9 10 11 12 13 14 15 16 17 18 19 20 21 22 23 24 25 26 27 28 29 30 31 32 33 34 35 36 37 38 39 40 41 42 43 44 45 46 47 48 49 50 51 52 53 54 55 56 57 58 59 60 61 62 63 64 65 66 67 68 69 70 71 72 73 74 75 76 77 78 79 80 81 82 83 84 85 86 87 88 89 90 91 92 93 94 95 96 97 98 99 100

Ready

7/6/11

Appendix 1: Memorial Recording Form

The standard Memorial Recording Form contained on the following pages should be used in collecting memorials data. This will ensure that data is collected in a standardised way, and can be extracted for entry to the database.

Memorial Recording Form

Graveyard

Denomination

Memorial Number

Surname

Christian

Address

Occupation

Birth

Death

Age

Orientation

Memorial Material

Number of People Commemorated

No. of Components

Limestone

Condition of Memorial

Inscribed Faces

Sandstone

Granite

Condition of Inscription

Dimensions

Mem. Type

Slate

Height

Head

Marble

Stonemason or Undertaker

Width

Flat

Other

Thickness

Tomb

Other

Name of Recorder

Date

Memorial Recording Form

Inscription

Stone Top

Symbol

Ornament

Photo Neg Numbers

Remarks

Appendix 2: Codes for Recording Co. Roscommon Graveyards & Memorials

Codes for Recording Graveyards & Memorials

When recording graveyards & memorials using the **Memorials & Graveyards Database & Guidelines, April 2005** developed by Heritage Office, Laois County Council and distributed by the Heritage Office, Roscommon County Council in November 2007 it is important that no two graveyards use the same code, as this will make it impossible to add the information gathered to a countywide database.

To select the correct code for your graveyard please refer to the County Roscommon Graveyard Survey on the Heritage Section of www.roscommoncoco.ie. Find your graveyard there and then select the assigned code for that graveyard from this list. That code must be used for all recording and photography carried out and entered in to the Memorials & Graveyards Database.

Number	Graveyard Name as used in County Roscommon Graveyard Survey	Graveyard Code
104	Aclare C of I	acl
64	Ardcarne New	ard
65	Ardcarne Old C of I	aro
170	Ardkeenán CBG	arn
111	Ardkieran Graveyard	ark
261	Ardkill CBG	arl
103	Ardlagheen CBG	arg
60	Arigna Old & New	ara
148	Assyllinn Old & New	ass
192	Athleague C of I	atc
194	Athleague New graveyard	atn
193	Athleague RC Church	atr
289	Atteagh Graveyard (T)	atg
251	Attirory CBG	att
244	Aughrim C of I	auc
246	Aughrim New G'yard	aun
245	Aughrim Old Graveyard	auo
243	Aughrim RC Church	aur
7	Ballagh Church	bal
262	Ballaghaderreen C of I	bac
125	Ballaghacullia CBG	bag
263	Ballaghderreen Old	bao
137	Ballinaboy CBG	bay
106	Ballinaheglish Church	bhc
32	Ballinameen Church	bnm
288	Ballinameen G'Y	Bne
126	Ballincool burial ground	Bob
3	Ballinderry New	Bdn
4	Ballinderry old	Bdo
197	Ballindrumlea CBG	Bdl
229	Ballinlough Graveyard	Blg

Number	Graveyard Name as used in County Roscommon Graveyard Survey	Graveyard Code
230	Ballinlough RC Church	Blr
44	Ballintober Graveyard	btg
43	Ballintober Church	btc
231	Ballybane Upper CBG	bbu
217	Ballyforan Church	bfc
46	Ballygortagh CBG	bgc
8	Ballyleague Church	blc
37	Ballymoylin CBG	byy
157	Ballymurray Quaker G'yd	bqg
74	Baslick Graveyard	blk
127	Bellanagare Graveyard	bgg
136	Bellanagare Old Church	bgo
264	Boghtaduff CBG	bgf
149	Boyle Abbey	bya
156	Boyle C of I	byc
154	BoyleWorkhouse G'yard	byw
33	Breedogue Church	boc
50	Brideswell CBG	bwc
112	Bullys Acre Strokestown	bas
207	Bully's Acre Castlerea	bsc
138	Bully's Acre Roscommon	bar
113	Bumlin	bum
87	Caldragh New G'yard	cng
86	Caldragh old G'yard	cog
52	Cam New G' yard	cmn
51	Cam Old	cmo
274	Camlagh CBG	cac
285	Carnagh East CBG	cec
75	Carns Burial G'd & CBG	cbg
284	Carrane CBG	crc
53	Carrick CBG	ckc
283	Carrownageeloge CBG	cwc
178	Carrownaknockaun CBG	cwk
114	Carrownaskeagh church	cws
282	Carrowreagh CBG	cgh
232	Castlequarter CBG	cqc
201	Castlerea Convent G'yard	Ccg
198	Castlerea Old & New	con
252	Castlesampson CBG	csp
77	Castleteehan CBG	ctc
66	Church Hill BG & CBG	chb
107	Clogher Mausoleum	cmm
24	Clonburren Graveyard	crr
172	Clonellon CBG	cil
175	Clonown New G;yard	cwn
174	Clonown Old Graveyard	cwo
279	Cloonaddron CBG	cdd
171	Cloonakilla Graveyard	ckl
179	Cloonard Graveyard	cdn

Number	Graveyard Name as used in County Roscommon Graveyard Survey	Graveyard Code
180	Cloonargid CBG	cgd
199	Cloonbonniff CBG	cff
181	Clooncan CBG	ccc
200	Clooncoose South CBG	ccs
247	Clooncraft Graveyard	cfg
233	Clooncrim CBG	cim
25	Cloonfad CBG	cfđ
234	Cloonfad Church	cfc
235	Cloonfad New G'yard	cfn
26	Cloonfad West CBG	cfw
115	Cloonfinlough	coo
265	Cloonlumney CBG	cln
253	Cloonoghill G'yard & CBG	cil
128	Cloonshanville Abbey	cve
9	Cloontuskert Old & New	ctk
108	Cloverhill Church	clv
116	Convent Graveyard Strokestown	cgs
139	Convent Graveyard Roscommon	cgr
163	Coolnageer BG & CBG	cee
150	Coolnagranshy G'yard	chy
67	Cootehall Church	cth
129	Cornamuclagh CBG	cuc
140	Correal G'yard & CBG	cea
14	Corrigeenroe Church	cgo
47	Creagh Graveyard	cyd
89	Creeve Church	crv
88	Creeve G'Y	crg
266	Creggan CBG	cgg
208	Croghan C of I	cci
209	Croghan RC Church	Cnr
182	Cuiltyboe Graveyard	cyb
218	Curraghadooñ CBG	cuh
290	Derrane Church	drr
2	Derrane Old & New	don
34	Derrycoagh CBG	dyh
84	Dominican Priory G'yard Tulsk	dpt
97	Donamon C of I	dci
99	Donamon Castle C of I	dcc
98	Donamon Castle SVD	dsd
151	Doon CBG	doo
173	Drum Old & New G'yard	drm
68	Drumboylan Church	dby
210	Drumlion New G'yard	dln
221	Dysart Ancient G'yard.	dýt
219	Dysart Church	dyc
220	Dysart New Graveyard	dyn
90	Elphin Cathedral	epc
92	Elphin New G'yard	epn
91	Elphin Old G'yard	epo

Number	Graveyard Name as used in County Roscommon Graveyard Survey	Graveyard Code
203	Emlagh G'yard & CBG	eml
109	Emlagh More G'yard (T)	emm
45	Emlaghglasny BG	emg
27	Equity House Mausoleum	ehm
152	Erris Graveyard	err
211	Estersnow	est
19	Fairymount Church	fry
21	Fairymount Graveyard	frg
63	Famine Grave	fgv
70	Feevagh CBG	fee
11	Four Mile House Church	fmh
222	Four Roads Church	frc
183	Franciscan Convent Loughglynn	fcl
130	Frenchpark Church	fpc
196	Fuerty Church	fyc
195	Fuerty Old & New	fyo
159	Gailey Graveyard	gyg
237	Garranlaghan G'yard	grr
236	Garranlahan Church	glh
267	Glebe G'yard & CBG	ggc
185	Gortaganny CBG	gnn
184	Gortaganny Graveyard	gng
268	Gortanure CBG	Gtu
10	Grange Abbey	gra
269	Hawksford CBG 2	haw
270	Hawksford CBG 1	hak
286	Highlake CBG	hlc
110	Highlake Monastery	hlm
202	Holy Trinity C of I	htc
62	Keadue RC Church	krc
18	Kilbarry	kby
28	Kilbegley Graveyard	kig
100	Kilbegnet Church	kit
101	Kilbegnet new G'yard	ktn
102	Kilbegnet Old GY & CBG	kto
248	Kilbride Graveyard	kbq
12	Kilbryan C of I	kbc
212	Kilcolagh Graveyard	kic
272	Kilcolman New G'yard	klm
271	Kilcolman Old G'yard	klo
161	Kilcommmin Graveyard	klg
79	Kilcooley Old & New	klc
131	Kilcorkey	kck
291	Kildallogge BG	kdq
6	Kilgefin	kgf
40	Kilglass C of I	kls
38	Kilglass Graveyard	kss
39	Kilglass RC Church	ksr
20	Kilhooly CBG	kho

Number	Graveyard Name as used in County Roscommon Graveyard Survey	Graveyard Code
204	Kilkeevan Graveyard	kkv
276	Kilkenny B'Ground 1	kkk
278	Kilkenny B'Ground 2	kkn
277	Kilkenny CBG 1	kky
213	Killappoge Graveyard	kpp
71	Killeenan New	kln
69	Killeenan Old	kee
287	Killeglan CBG	kgn
80	Killina	kll
249	Killinaddan	kdd
158	Killinvoy Graveyard	kvy
214	Killukin Old Graveyard	kuk
215	Killummod Old G'yard	kmm
191	Kilmacroy	kcy
93	Kilmacumsey	ksy
162	Kilmaine Graveyard	Kme
95	Kilmaryl Church	kmy
94	Kilmaryl Graveyard	kmg
250	Kilmore C of I	kmc
78	Kilmurry Church	krr
35	Kilnahanagh Old & New	kno
186	kilroddan	klr
61	Kilronan C of I	krr
59	Kilronan Old & New	kon
188	Kilroan New Graveyard	koo
187	Kilroan Old Graveyard	kog
141	Kilteevan Church	knc
142	Kilteevan Graveyard	kng
54	Kiltoom C of I	ktc
49	Kiltoom Church	ktm
55	Kiltoom New Graveyard	kmn
56	Kiltoom Old Graveyard	kyd
118	Kiltrustan	ktt
117	Kiltrustan Church	ktr
228	Kiltullagh C of I	ktu
238	Kiltullagh Graveyard	ktg
119	Kilverdan	kvr
254	Knock CBG	knk
160	Knockcroghery Church	kgc
143	Lisbride Tomb vault CBG	ltv
275	Lisnagavragh CBG	lgv
120	Lissonuffy	lss
189	Loughglinn Church	lgg
57	Lysterfield CBG	lys
58	Lysterfield CBG	lyt
121	Mahon Mausoleum	mhm
239	Meeltraun CBG	mee
205	Moor CBG	moo
29	Moore New Cemetery	mre

Number	Graveyard Name as used in County Roscommon Graveyard Survey	Graveyard Code
31	Moore Old Graveyard	mro
30	Moore Parish Church	mpc
223	Mount Talbot C of I	mtc
256	Newtown Kilcashel CBG	ntk
255	Newtown Kilcashel CBG	nwk
73	Oakport	oak
82	Ogulla	ogu
105	Oran	orn
132	Portahard CBG	Por
164	Portrun Graveyard	ptn
165	Rahara Old & New	rah
280	Rath- na-nEag CBG	rne
81	Rathmoyle	rat
41	Rooskey C of I	roo
42	Rooskey RC Church	rky
144	Roscommon Abbey	ros
145	Sacred Heart Church Roscommon	rsh
15	Scramogue Church	scr
16	Scramogue Graveyard	scg
166	Scrine CBG	scc
96	Shankhill	shk
134	Sheepwalk CBG	shw
85	Sisters of Mercy G'yard Elphin	ecm
146	St. Comans C of I	com
147	St. Coman's graveyard	stc
168	St. John's Old G'yard	sjo
122	St. John's C of I Strokestown	sjs
167	St. John's C of I G'yard Rinnegan	sjc
169	St. John's New G' yard Gort	sjn
153	St. Josephs Church Boyle	sjb
273	St. Nathy's Cathedral	snb
240	Stonepark South CBG	ssc
124	Strokestown RC Church	skt
123	Strokestown Graveyard Kildalogue	sgk
176	Summerhill convent	smn
206	Tarmon CBG	tar
224	Taughboy Old & New	tau
259	Taughmaconnell Church	tgh
258	Taughmaconnell New	tgn
257	Taughmaconnell Old	tgo
260	Tawagh CBG	taw
241	Teampalin Mhuire CBG	tea
242	Themhair GY & CBG	the
177	Thomastown Demesne	tho
133	Tibohine C of I Portaghard	tbc
23	Tibohine new Graveyard	tbn
22	Tibohine Old Graveyard	tbo
13	Tintagh CBG	tin
225	Tisrara Ancient G'yard	tis

Number	Graveyard Name as used in County Roscommon Graveyard Survey	Graveyard Code
226	Tisrara New Graveyard	tng
83	Toberelva	Tob
281	Tonebane CBG	ton
36	Tonroe or Creen CBG	tcc
155	Trinity Island	try
135	Tully CBG	tly
190	Tully CBG	tyc
76	Tulsk Parish Church	tpc
216	Tumna Ancient G'yard	tmn
72	Tumna Cof I	tcI
227	Turrock CBG	trr
17	Whitehall Church	whi