

**APPROPRIATE
ASSESSMENT
SCREENING REPORT
FOR**

Public Realm Enhancement

Scheme

Termonbarry



**Comhairle Contae
Ros Comáin**
Roscommon
County Council

Screening for Appropriate Assessment:

Table 1: Project Details

Development Consent Type	Part 8 Local Authority Own Development
Development Location	Termonbarry, Co. Roscommon
Description of the Project	Proposed Public Realm Enhancement Scheme in the village of Termonbarry

Table 2: Identification of Natura 2000 Sites (SACs and SPAs) which may be impacted by the proposed development

Please answer the following questions in order to determine whether there are any Natura 2000 sites which could potentially be impacted by the proposed development.

Special Areas of Conservation (SAC)

Impacts on habitats

1.	Impacts on Freshwater Habitats	Likely Effects (direct, indirect or cumulative)
	<p>Is the development within a Special Area of Conservation whose qualifying interests include freshwater habitats, or in the catchment of same?</p> <p>Sites to consider <u>Lough Forbes Complex SAC</u> (Site Code: 001818) Distance from Site: 1.15 km Designated features: Natural eutrophic lakes with Magnopotamion or Hydrocharition - type vegetation (#3150)</p> <p><u>Lough Ree SAC</u> (Site Code: 000440) Distance from Site: 8.91 km Designated features: Natural eutrophic lakes with Magnopotamion or Hydrocharition - type vegetation (#3150)</p> <p><u>Fortwilliam Turlough SAC</u> (Site Code: 000448) Distance from Site: 13.93 km</p>	<p>No</p> <p>No significant impacts on these Natura sites are likely</p>

	Designated features: Turloughs (#3180)	
2.	Impacts on Bog Mires and Fens Habitats	Likely Effects (direct, indirect or cumulative)
	<p>Is the development within a Special Area of Conservation whose qualifying interests include Bog Mires and Fens habitats, or within 1km of same?</p> <p>Sites to consider</p> <p><u>Lough Forbes Complex SAC</u> (Site Code: 001818) Distance from Site: 1.15 km Designated features: Active raised bogs (#7110), Degraded raised bogs still capable of natural regeneration (#7120), Depressions on peat substrates of the Rhynchosporion (#7150)</p> <p><u>Brown Bog SAC</u> (Site Code: 002346) Distance from Site: 4.0 km Designated features: Active raised bogs (#7110), Degraded raised bogs still capable of natural regeneration (#7120), Depressions on peat substrates of the Rhynchosporion (#7150)</p> <p><u>Clooneen Bog SAC</u> (Site Code: 002348) Distance from Site: 5.75 km Designated features: Degraded raised bogs still capable of natural regeneration (#7120), Depressions on peat substrates of the Rhynchosporion (#7150)</p> <p><u>Lough Ree SAC</u> (Site Code: 000440) Distance from Site: 8.91 km Designated features: Degraded raised bogs still capable of natural regeneration (#7120), Alkaline fens (#7230)</p> <p><u>Corbo Bog SAC</u> (Site Code: 002349) Distance from Site: 12.53 km Designated features: Depressions on peat substrates of the Rhynchosporion</p>	<p>No</p> <p>No significant impacts on this Natura site are likely</p>

	<p>(#7150),Degraded raised bogs still capable of natural regeneration (#7120),Active raised bogs (#7110)</p> <p><u>Annaghmore Lough (Roscommon) SAC</u> (Site Code: 001626) Distance from Site: 14.43 km Designated features: Alkaline fens (#7230)</p>	
3.	Impacts on Forests Habitats	Likely Effects (direct, indirect or cumulative)
	<p>Is the development within a Special Area of Conservation whose qualifying interests include Forests habitats, or within 1km of same?</p> <p>Sites to consider <u>Lough Forbes Complex SAC</u> (Site Code: 001818) Distance from Site: 1.15 km Designated features: Alluvial forests with Alnus glutinosa and Fraxinus excelsior (Alno-Padion, Alnion incanae, Salicion albae) (#91E0)</p> <p><u>Clooneen Bog SAC</u> (Site Code: 002348) Distance from Site: 5.75 km Designated features: Bog woodland (#91D0)</p> <p><u>Lough Ree SAC</u> (Site Code: 000440) Distance from Site: 8.91 km Designated features: Old sessile oak woods with Ilex and Blechnum in the British Isles (#91A0),Bog woodland (#91D0)</p>	<p>No</p> <p>No significant impacts on this Natura site are likely</p>

4.	Impacts on Grasslands Habitats	Likely Effects (direct, indirect or cumulative)
	Is the development within a Special Area of Conservation whose qualifying interests include Grasslands habitats, or within 1km of same?	No No significant impacts on this Natura site are likely
	Sites to consider <u>Lough Ree SAC</u> (Site Code: 000440) Distance from Site: 8.91 km Designated features: Semi-natural dry grasslands and scrubland facies on calcareous substrates (Festuco-Brometalia) (* important orchid sites) (#6210)	
5.	Impacts on Heath and Scrub Habitats	Likely Effects (direct, indirect or cumulative)
	Is the development within a Special Area of Conservation whose qualifying interests include Heath and Scrub habitats, or within 1km of same? Sites to consider None	N/A
6.	Impacts on Rocky Habitats	Likely Effects (direct, indirect or cumulative)
	Is the development within a Special Area of Conservation whose qualifying interests include Rocky habitats, or within 1km of same? Sites to consider <u>Lough Ree SAC</u> (Site Code: 000440) Distance from Site: 8.91 km Designated features: Limestone pavements (#8240)	No No significant impacts on this Natura site are likely

7.	Impacts on Dunes Habitats	Likely Effects (direct, indirect or cumulative)
	Is the development within a Special Area of Conservation whose qualifying interests include Dunes habitats, or within 1km of same? Sites to consider None	N/A
8.	Impacts on Coastal Habitats	Likely Effects (direct, indirect or cumulative)
	Is the development within a Special Area of Conservation whose qualifying interests include Coastal habitats, or within 1km of same? Sites to consider None	N/A

Impacts on Species

1.	Impacts on Amphibians	Likely Effects (direct, indirect or cumulative)
	Is the development within a Special Area of Conservation whose qualifying interests include Amphibians, or in the catchment of same? Sites to consider None	N/A
2.	Impacts on Anthropods	Likely Effects (direct, indirect or cumulative)
	Is the development within a Special Area of Conservation whose qualifying interests include Anthropods or within 1km of same? Sites to consider None	N/A
3.	Impacts on Fish	Likely Effects (direct, indirect or cumulative)
	Is the development within a Special Area of Conservation whose qualifying interests include Fish, or within 1km of same? Sites to consider None	N/A

4.	Impacts on Mammals	Likely Effects (direct, indirect or cumulative)
	<p>Is the development within a Special Area of Conservation whose qualifying interests include Mammals, or within 1km of same?</p> <p>Sites to consider <u>Lough Ree SAC</u> (Site Code: 000440) Distance from Site: 8.91 km Designated features: Lutra lutra (Otter) (#1355)</p>	<p>No</p> <p>No significant impacts on this Natura site are likely</p>
5.	Impacts on Mollucs	Likely Effects (direct, indirect or cumulative)
	<p>Is the development within a Special Area of Conservation whose qualifying interests include Mollucs, or within 1km of same?</p> <p>Sites to consider <u>Annaghmore Lough (Roscommon) SAC</u> (Site Code: 001626) Distance from Site: 14.43 km Designated features: Vertigo geyeri (Geyer's Whorl Snail) (#1013)</p>	<p>No</p> <p>No significant impacts on this Natura site are likely</p>
6.	Impacts on Non-vascular Plants	Likely Effects (direct, indirect or cumulative)
	<p>Is the development within a Special Area of Conservation whose qualifying interests include Non-vascular plants, or within 1km of same?</p> <p>Sites to consider None</p>	<p>N/A</p>

7.	Impacts on Reptiles	Likely Effects (direct, indirect or cumulative)
	Is the development within a Special Area of Conservation whose qualifying interests include Reptiles, or within 1km of same? Sites to consider None	N/A
8.	Impacts on Vascular Plants	Likely Effects (direct, indirect or cumulative)
	Is the development within a Special Area of Conservation whose qualifying interests include Vascular Plants, or within 1km of same? Sites to consider None	N/A

Special Protection Areas (SPA):

1.	Impacts on Birds	Likely Effects (direct, indirect or cumulative)
	Is the development within a Special Protection Area, or within 1km of same? Sites to consider <u>Ballykenny-Fisherstown Bog SPA</u> (Site Code: 004101) Distance from Site: 1.15 km Designated features: Greenland White-fronted Goose (<i>Anser albifrons flavirostris</i>) (#A395) <u>Lough Ree SPA</u> (Site Code: 004064) Distance from Site: 8.92 km Designated features: Little Grebe (<i>Tachybaptus ruficollis</i>) (#A004), Whooper Swan (<i>Cygnus cygnus</i>) (#A038), Wigeon (<i>Anas penelope</i>) (#A050), Teal (<i>Anas crecca</i>) (#A052), Mallard (<i>Anas platyrhynchos</i>) (#A053), Shoveler (<i>Anas clypeata</i>) (#A056), Tufted	No No significant impacts on this Natura site are likely

	<p>Duck (<i>Aythya fuligula</i>) (#A061), Common Scoter (<i>Melanitta nigra</i>) (#A065), Goldeneye (<i>Bucephala clangula</i>) (#A067), Coot (<i>Fulica atra</i>) (#A125), Golden Plover (<i>Pluvialis apricaria</i>) (#A140), Lapwing (<i>Vanellus vanellus</i>) (#A142), Common Tern (<i>Sterna hirundo</i>) (#A193), Wetland and Waterbirds (#A999)</p>	
--	---	--

All designated sites within a 15km radius of the subject site have been considered in this screening for Appropriate Assessment.

Conclusion Table 2: If the answer to all of these questions is no, significant impacts can be ruled out for Natura 2000 sites. No further assessment is required; proceed to the Habitats Directive Conclusion Statement.

Screening for Appropriate Assessment - Conclusion Statement

<p>Development Type: Part 8 – Local Authority Own Development</p>
<p>Development Location: Termonbarry, Co. Roscommon.</p>
<p>Natura 2000 sites within impact zone: SAC:002349, SAC:002348, SAC:002346, SAC:001818, SAC:001626, SAC:000448, SAC:000440, SPA:004101, SPA:004064</p>
<p>Description of the Project: Public Realm Enhancement Scheme in the village of Termonbarry</p> <p>Describe how the project or plan (alone or in combination) could affect Natura 2000 sites(s): There is no likelihood of significant effects and no adverse impacts to site integrity are predicted, due to the nature of the works proposed and the separation distances between the site and Natura 2000 Sites.</p>
<p>If there are potential negative impacts, explain whether you consider if these are likely to be significant, and if not, why not:</p> <p>There is no likelihood of significant effects and no adverse impacts to site integrity are predicted, due to the nature of the works proposed.</p> <p>It is not considered that there will be any loss of habitat within any European Sites, nor any loss of any qualifying Annex 1 habitat outside designated sites.</p>

Conclusion of Screening Assessment:

Following an assessment of the proposed development and any potential relationships with European Sites, it is concluded that either alone or in combination with other plans or projects, there would be no likely significant effects on any European Sites.

Documentation reviewed for making this statement:

Roscommon County Development Plan 2014 – 2020.

County Roscommon Heritage Plan 2012-2016

Completed by:

Brian Farragher, A/Senior Executive Planner

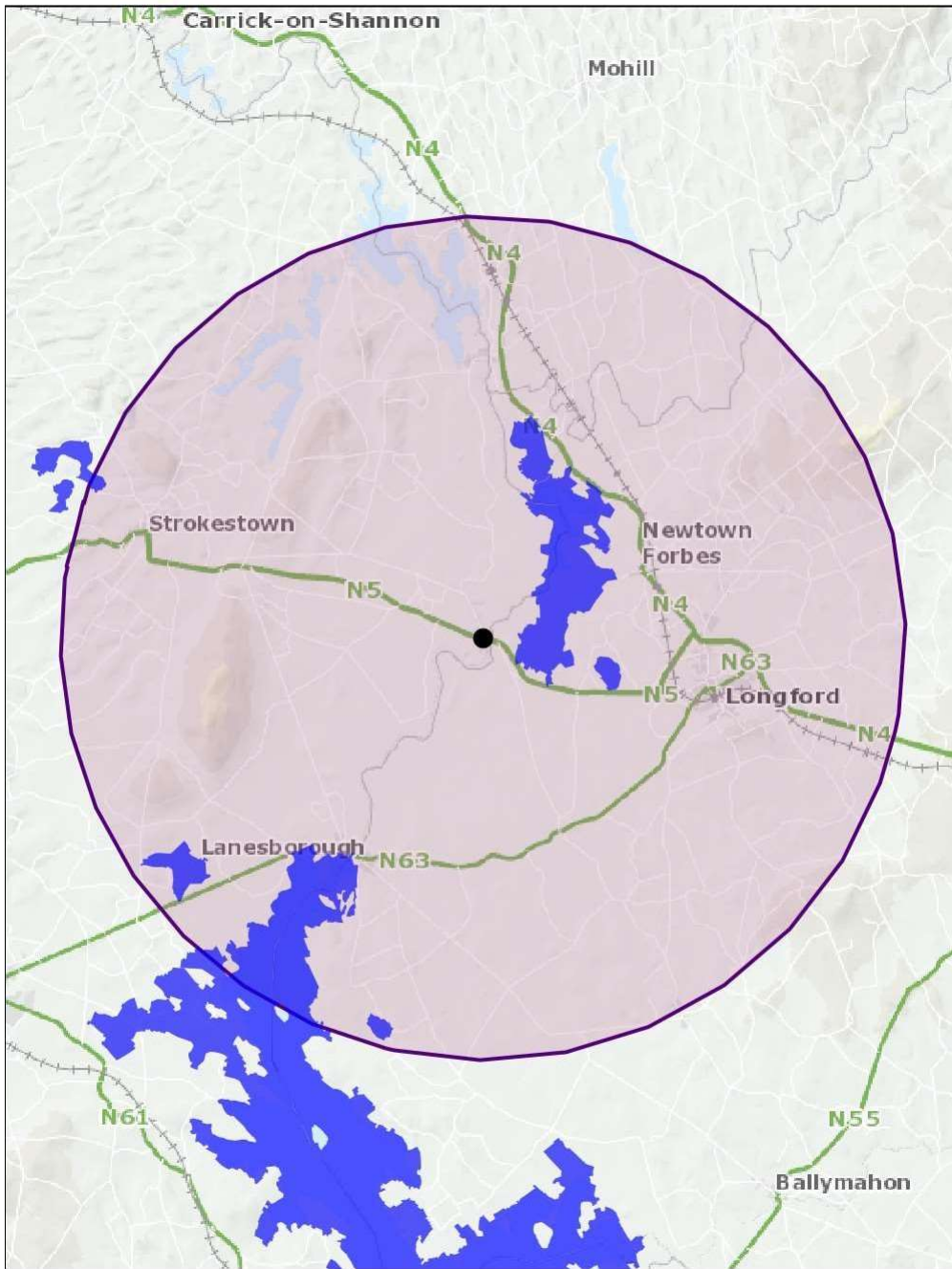
Date:

3rd June 2021

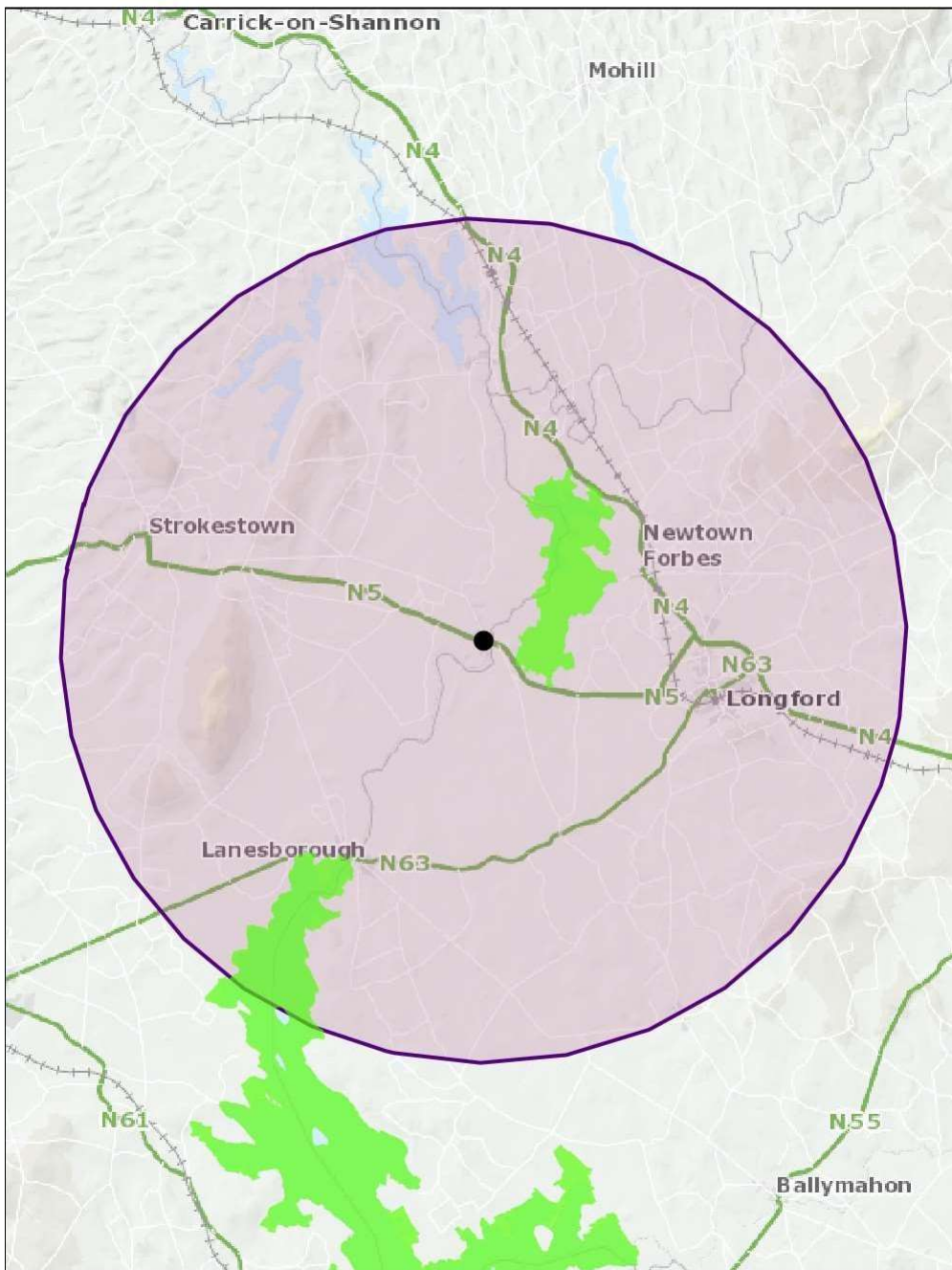


Signed: _____

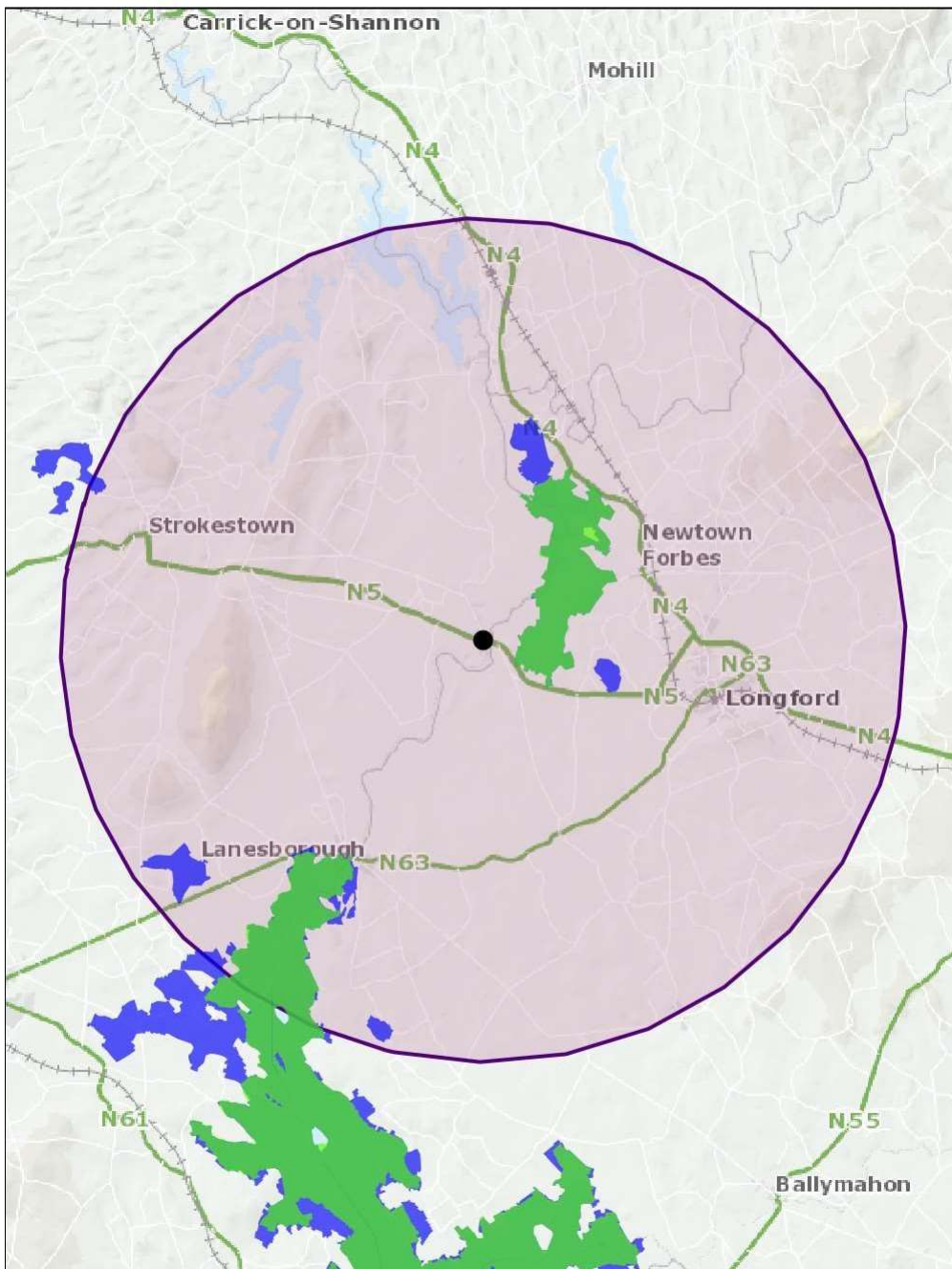
Date: 03-06-2021



SAC (blue) within 15km of Proposed Scheme



SPA (green) within 15km of Proposed Scheme



SAC & SPA within 15km of Proposed Scheme